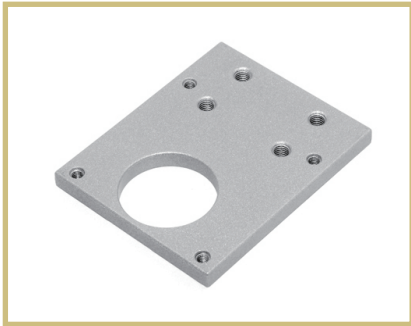
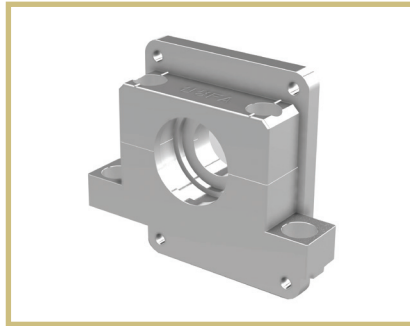


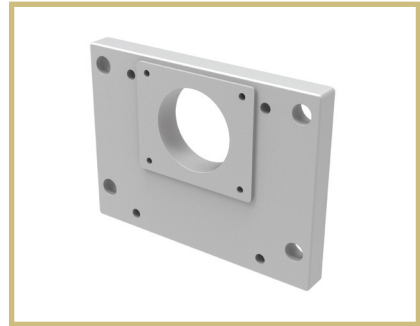
MOTOR BASE



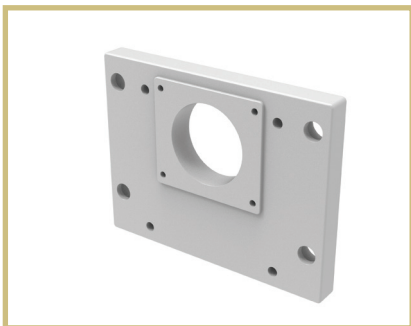
D111-1 page_090



D112-3 page_090



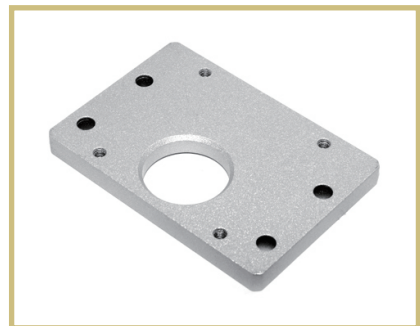
D125-1 page_090



D125-2 page_090



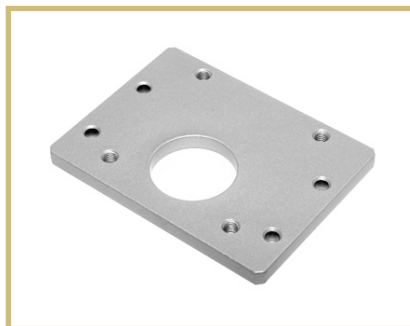
D128-1 page_091



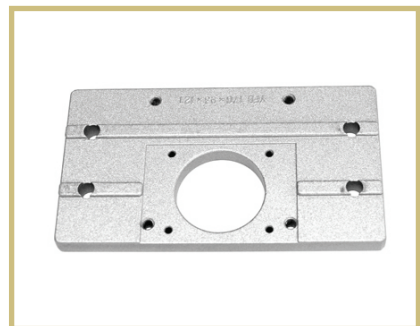
D130-1 page_091



D130-2 page_091



D130-3 page_091

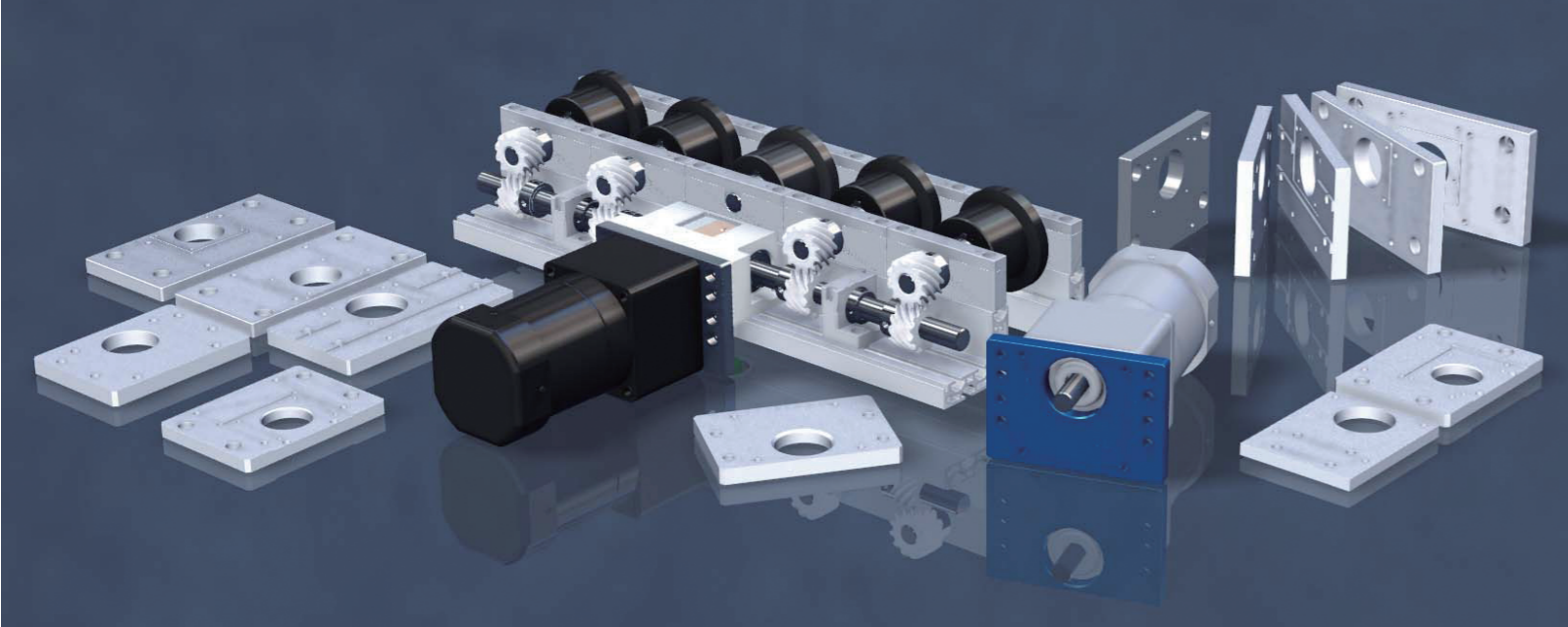


D170-1 page_089



D180-1 page_089

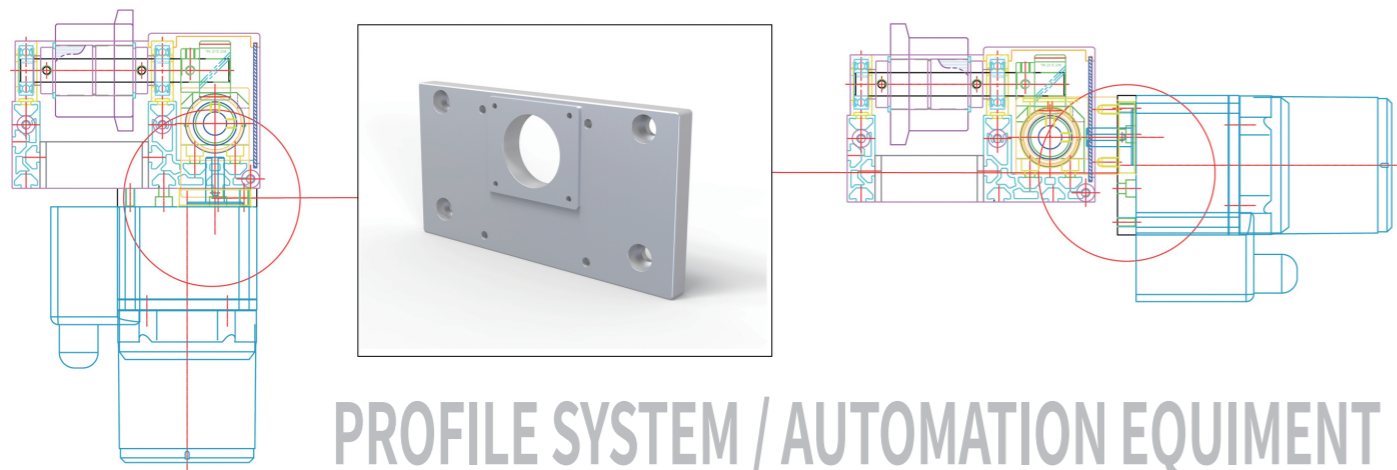
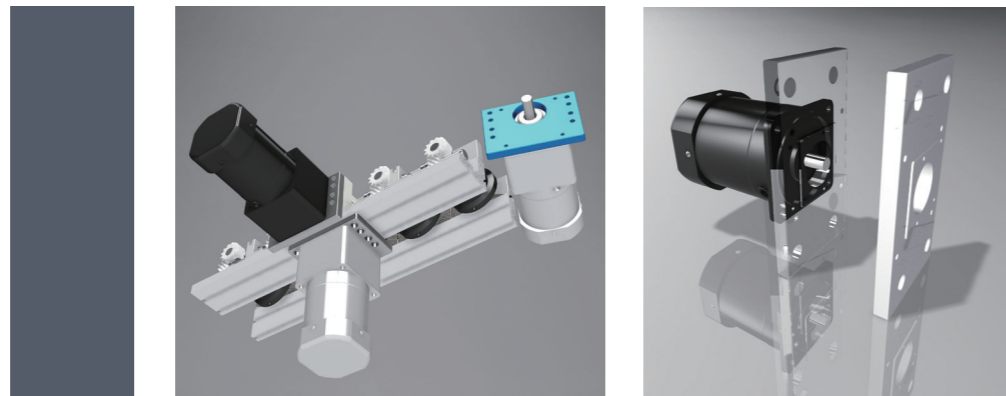
Roller Bearing Holder Motor Base Bracket Multi Bck Joint Hinge Magnet Handle Foot 방기구 Levelling Cover End Cap Bolt Nut Washer Special Profile Castor



Motor Base

알루미늄 외 다른 소재로 제작 가능 / 4대 중금속 시험 인증서 엄격한 관리

모터를 부착하기 전 알루미늄 프로파일 프레임 단면에 부착하여
 모터를 고정하여 하중을 지지하게 합니다.
 주로 알루미늄 소재로 제작을 많이 하나 주문자의 요청에 따라
 다른 소재로도 제작이 가능합니다.
 제품에 사용되는 도금 등 후 처리에 필요한 모든 공정은
 4대 중금속 유해물질 기준 시험 인증서를 공개하고
 엄격하게 관리하고 있습니다.



PROFILE SYSTEM / AUTOMATION EQUIPMENT

Motor Ordering Code

EXAMPLE

YK MTB - D 111-1



EXAMPLE = 영광테크 모터베이스 다이캐스팅 111-1

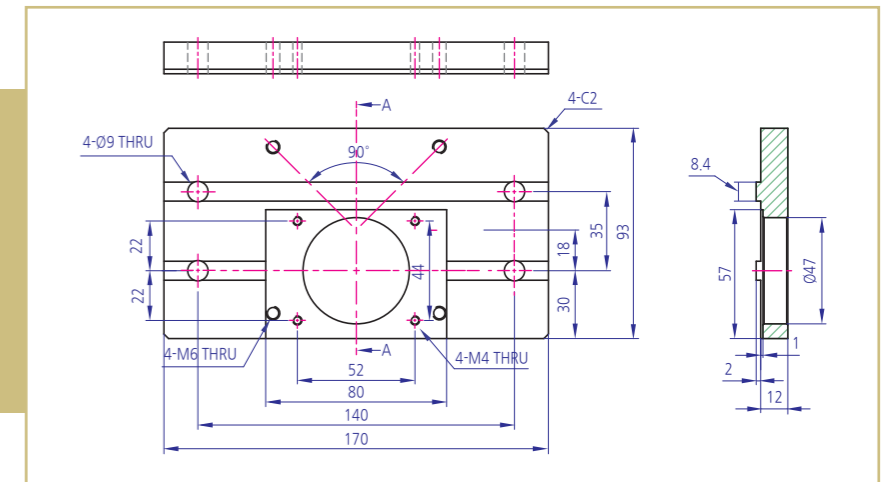
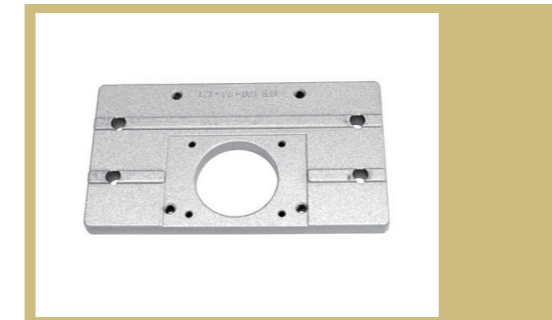
2d, 3d 및 상세한 내용은 홈페이지(www.yktec.co.kr) 참조



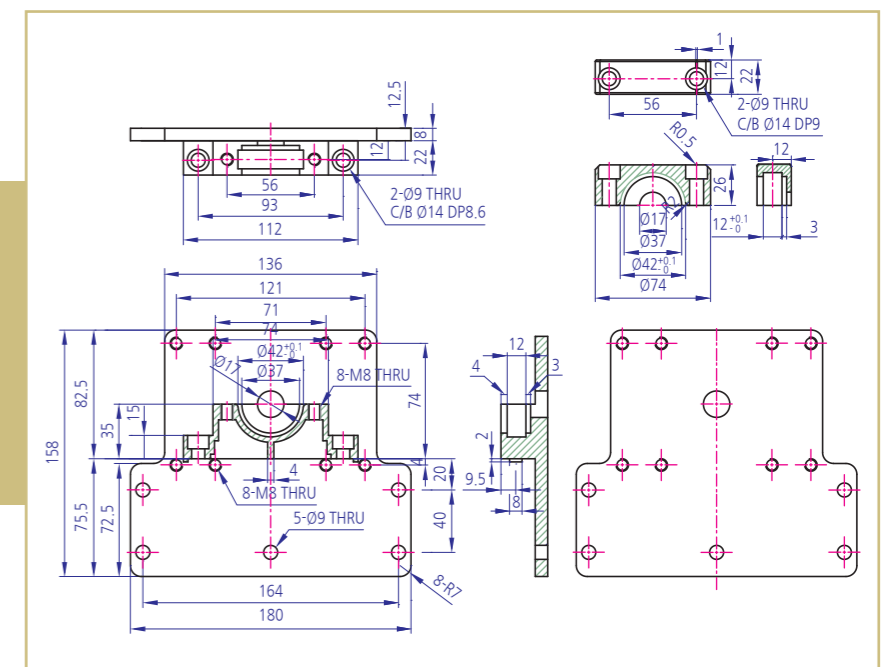
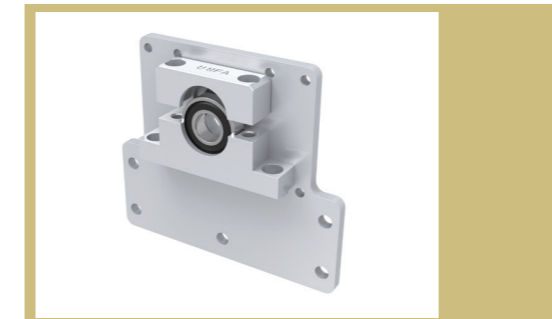
TECHNICAL DATA

모델명	CODE	MATERIAL	SURFACE PROCESSING	APPLICATION
D111-1	YKMTB-D111-1	ALDC-12	액체도장(SILVER)	MOTOR를 부착하기 전 FRAME 단면에 부착하여, MOTOR 고정 및 하중 지지
D125-1	YKMTB-D125-1			
D125-2	YKMTB-D125-2			
D128-1	YKMTB-D128-1			
D130-1	YKMTB-D130-1			
D130-2L,R	YKMTB-D130-2L YKMTB-D130-2R			
D130-3	YKMTB-D130-3			
D170-1	YKMTB-D170-1			베어링고정용(D/C)
D112-3	커버: YKBH-D112-3CS 블럭: YKBH-D112-3BS			
D180-1	커버: YKBH-D180-1CS 블럭: YKBH-D180-1BS			

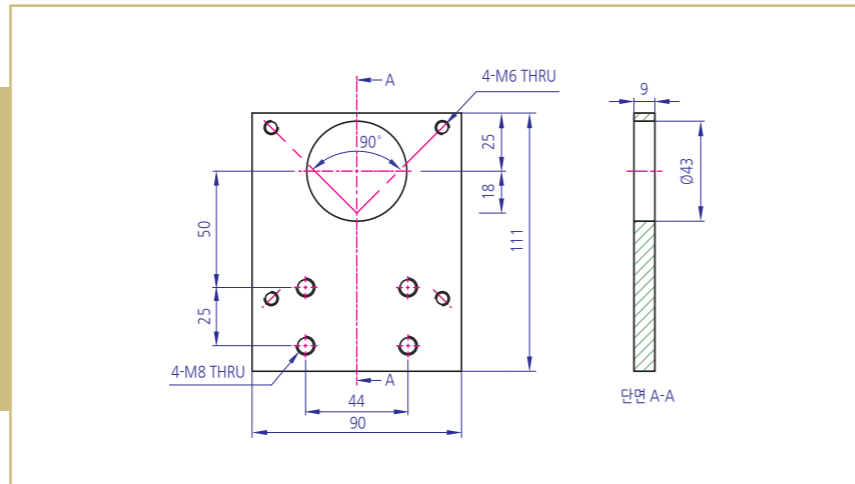
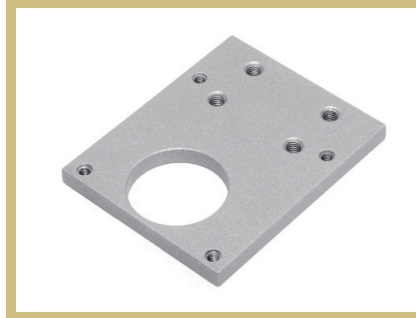
D170-1



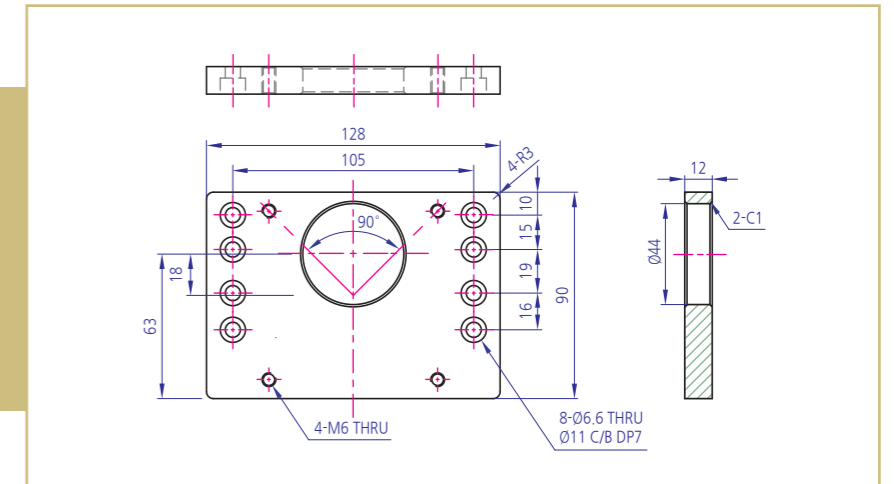
D180-1



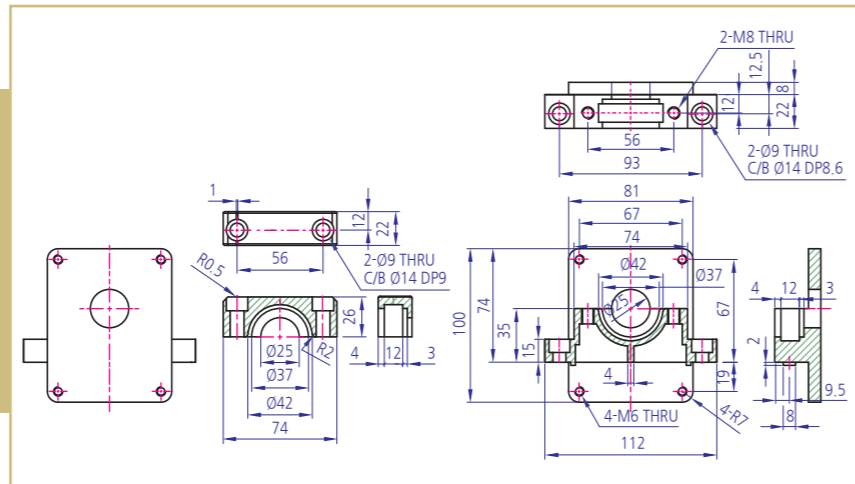
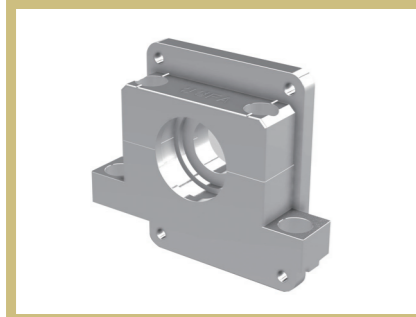
D111-1



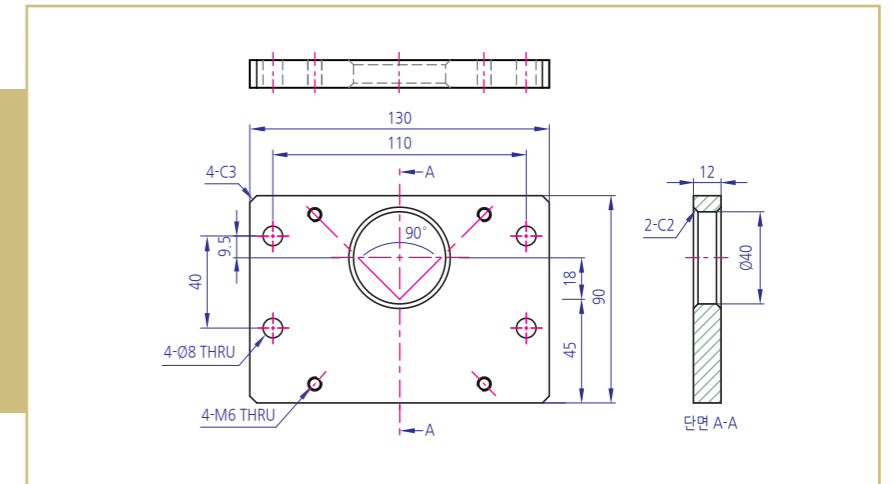
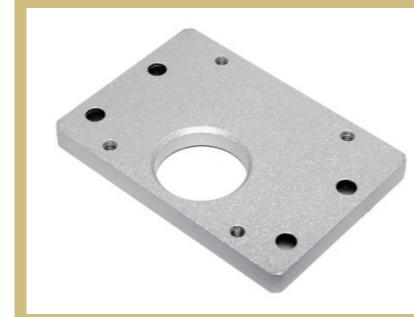
D128-1



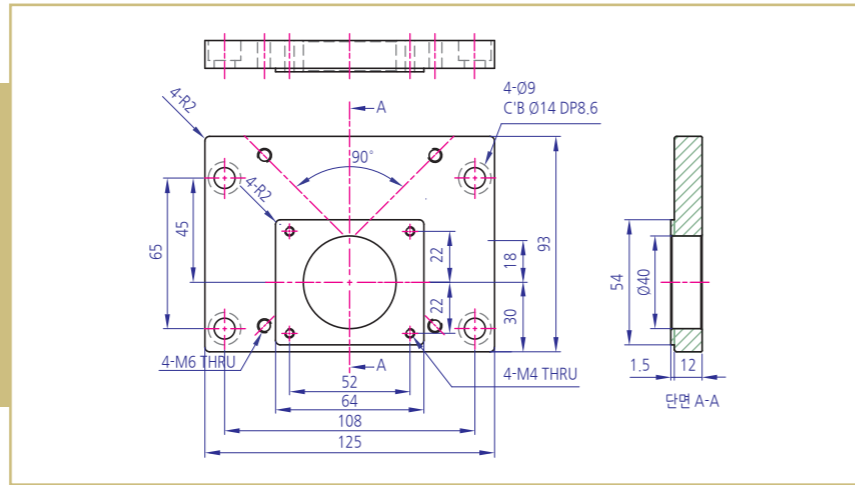
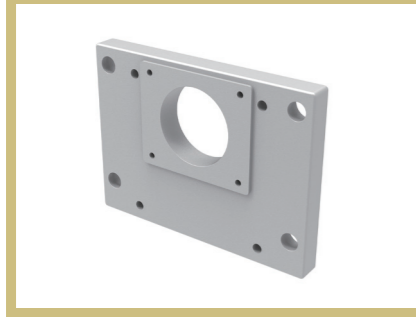
D112-3



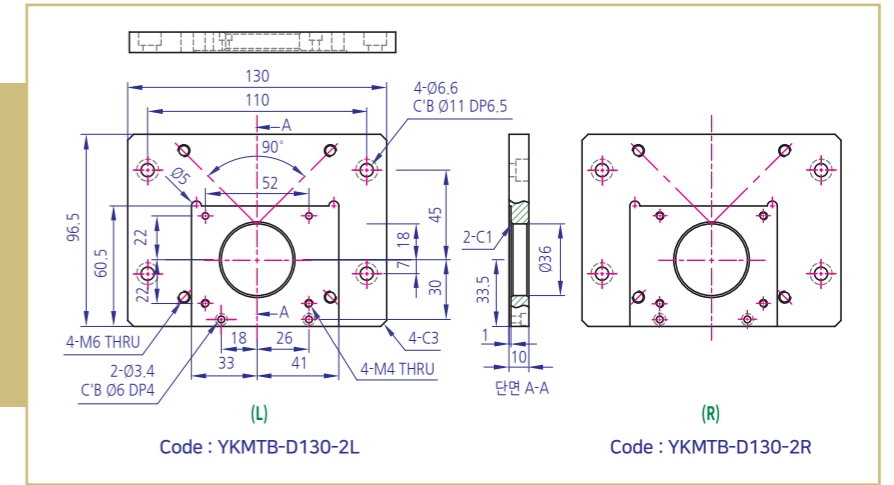
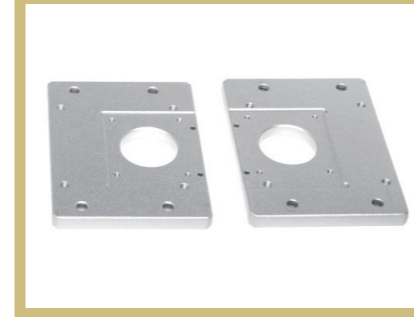
D130-1



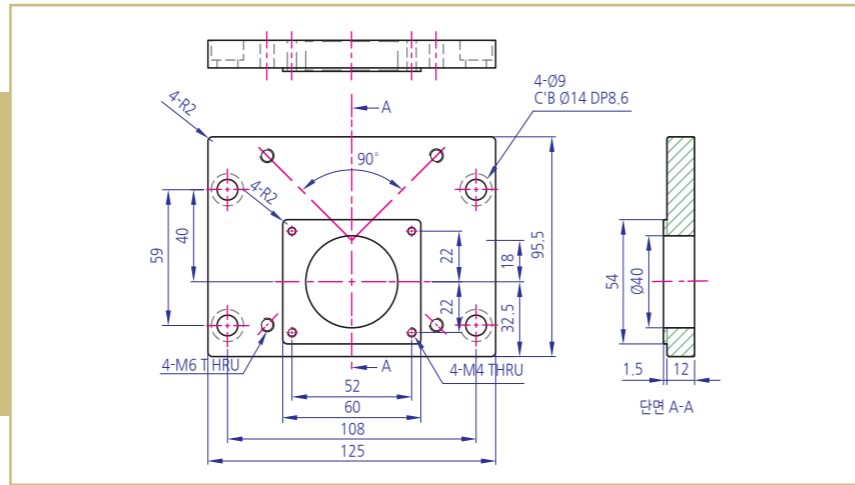
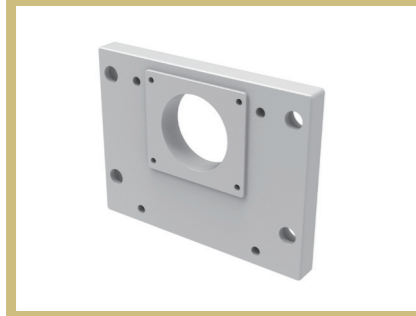
D125-1



D130-2L,R



D125-2



D130-3

