

# 방진구(Level Mount)

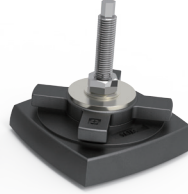
Y  
K  
L  
M  
Series  
page  
278  
~  
280



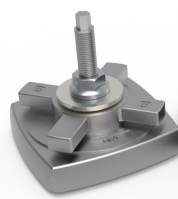
YKLM-110



YKLM-130



YKLM-160



Y  
K  
R  
M  
Series  
page  
281  
~  
282



YKRM-160



YKRM-220

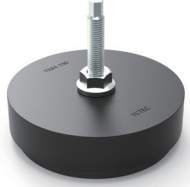


Y  
K  
L  
F

Y  
K  
M  
Series  
page  
283  
~  
283



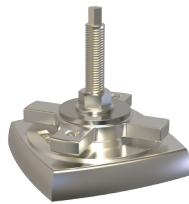
YKM-190



2차  
전지  
용  
page  
284  
~  
286



YKLM-110



YKLM-130



YKLM-160



2d, 3d 및 상세한 내용은 홈페이지([www.yktec.co.kr](http://www.yktec.co.kr)) 참조



# 방진구 Level Mount



## ▼ YKLM SERIES

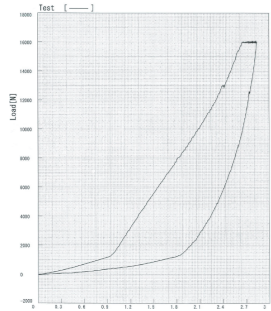
- 높낮이조절기능 / 경사면자동보정
- Base, Handle : Steel 단조 (도장)
- Bolt , Nut : NI+NI 도금
- 고하중용 장비 지지용. 바닥고정형 Frame을 별도의 장치없이 바닥에 고정시키기 위해 사용됨.

## ▼ YKM SERIES

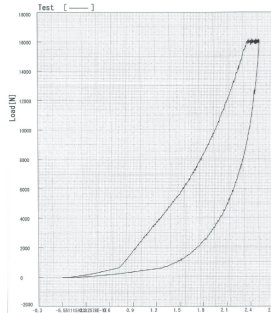
- 높낮이조절기능 / 경사면자동보정 / 상하 - 좌우 전방향 방진
- Base : Steel 단조 (도장)
- Bolt , Nut : NI+NI 도금

## ▼ YKRM SERIES

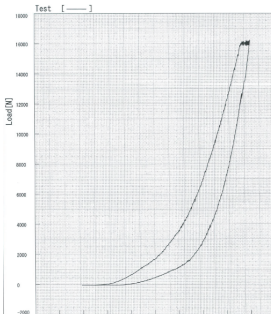
- 높낮이조절기능 / 경사면자동보정
- Base, Handle : Steel 단조 (도장)
- Bolt , Nut : NI+NI 도금
- 고하중용 장비 지지용. 바닥고정형 Frame을 별도의 장치없이 바닥에 고정시키기 위해 사용됨.



YKLM SERIES

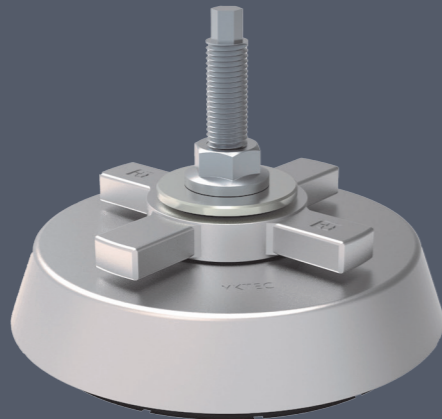


YKM SERIES

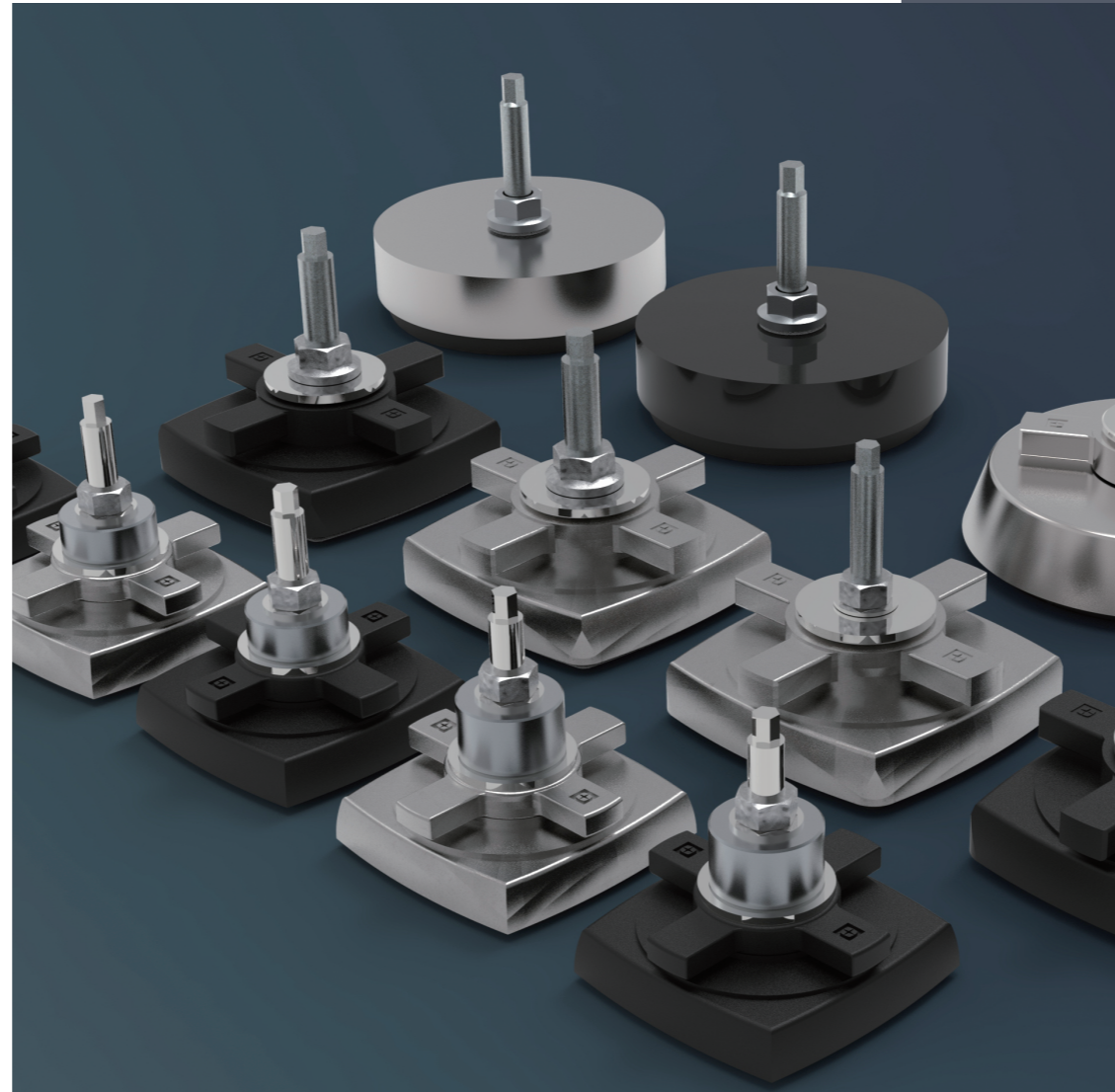
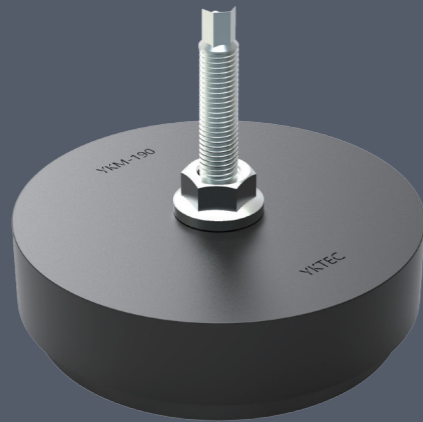


YKRM SERIES

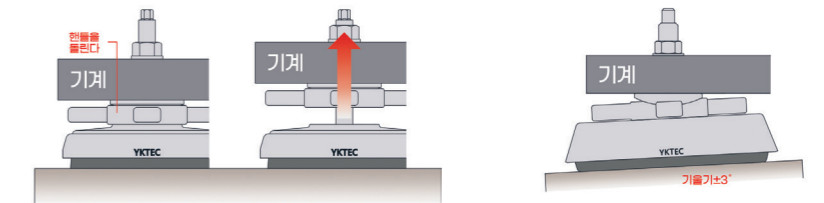
## YKRM SERIES



## YKM SERIES

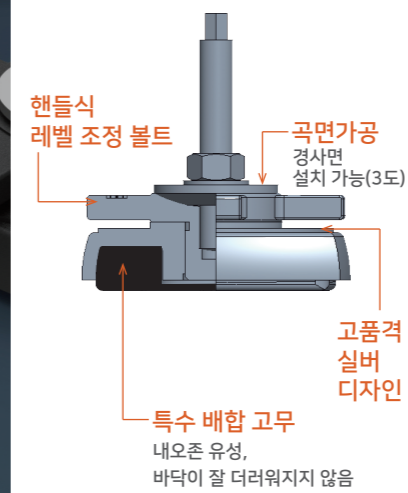


높낮이 레벨조정이 용이한 디스크 및 볼트 세트 / 진동이 큰 장비에 적합

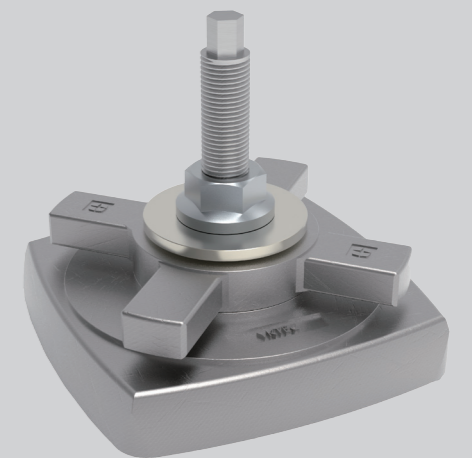


▲ YKLM SERIES

▲ YKRM SERIES



## YKLM SERIES



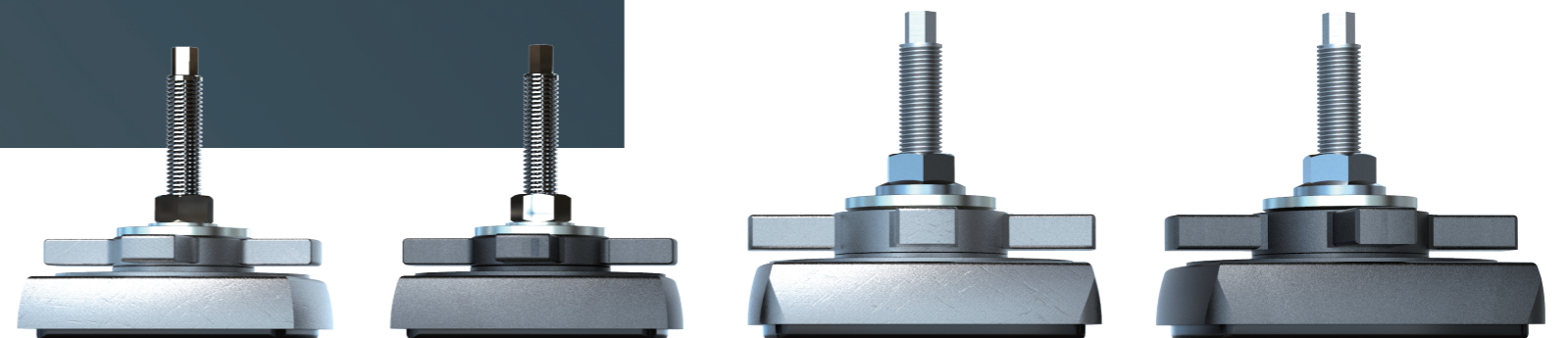
## YKLM SERIES

### 특성

- 소음 및 진동 감쇄 효과가 뛰어남
- 오일에 대한 특성 변화가 우수함.
- 내유, 내마모성, 내오존등 평균 이상임

### 용도

- 시험실, 정밀기기 등에 적합
- 기후 및 환경변화에 둔감하며 방진을 요구하는 현장 설비에 적합
- 내열, 내한, 내오존, 내약품성이 우수함





Code : YKLF-LM110

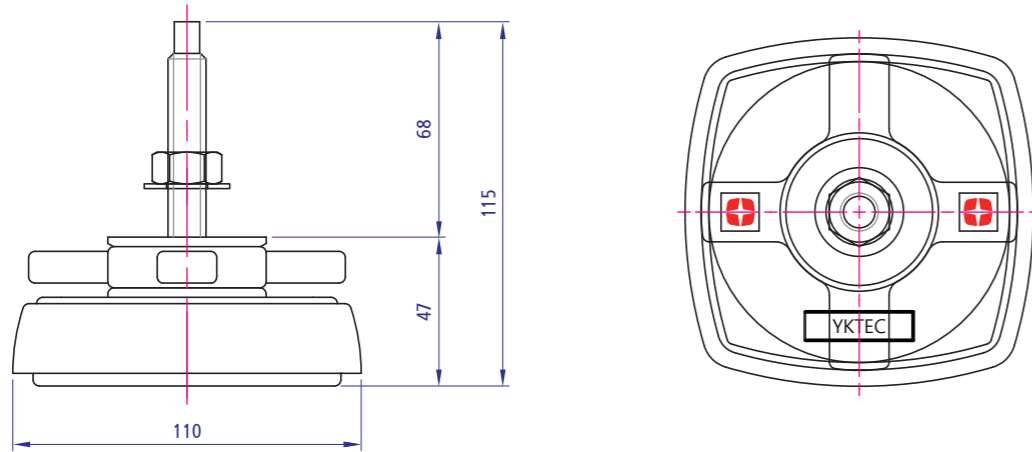
높낮이조절기능 / 경사면 자동보정  
YKLM-110

Technical Data

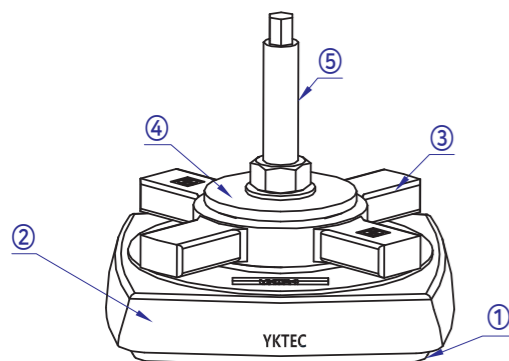
**Material** 볼트, 너트-SS400 / 하부컵-SM45C

**Surface Processing** 볼트, 너트-니켈 / 하부컵-분체도장

**Application** 고하중용 장비 지지용. 바닥고정형 Frame을 별도의 장치없이 바닥에 고정시키기 위해 사용됨.

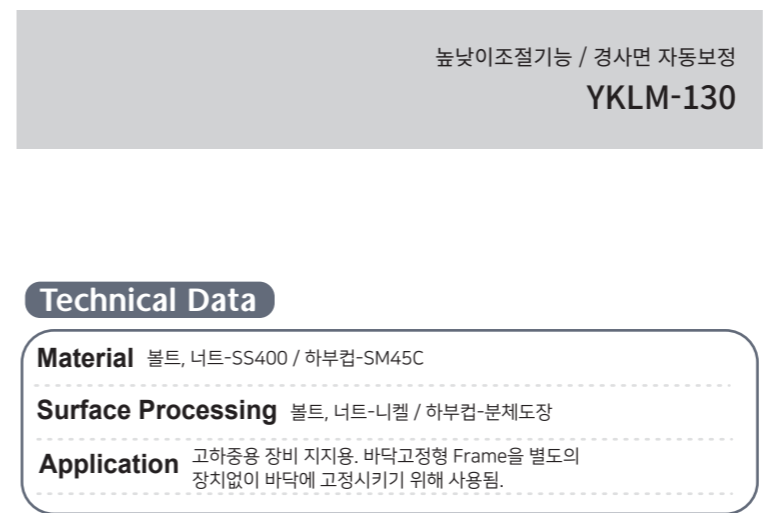


MODEL	L1	L2	레벨 조절양	G	B	A	M	허용하중(N)
YKLM-110	68	115	20	47	20	110	M12x1.75P	2,800~6,000N



Material

NO	품명 PARTS	재질 MATERIALS	표면 처리 TREATMENTS
1	PAD	N.B.R	검정(BLACK)
2	Base	SM45C	분체 도장(Pouder coated)
3	Handle	SM45C	분체 도장(Pouder coated)
4	Tilting와샤	SM45C	니켈 + 니켈
5	Bolt	SS400	니켈 + 니켈



Code : YKLF-LM130

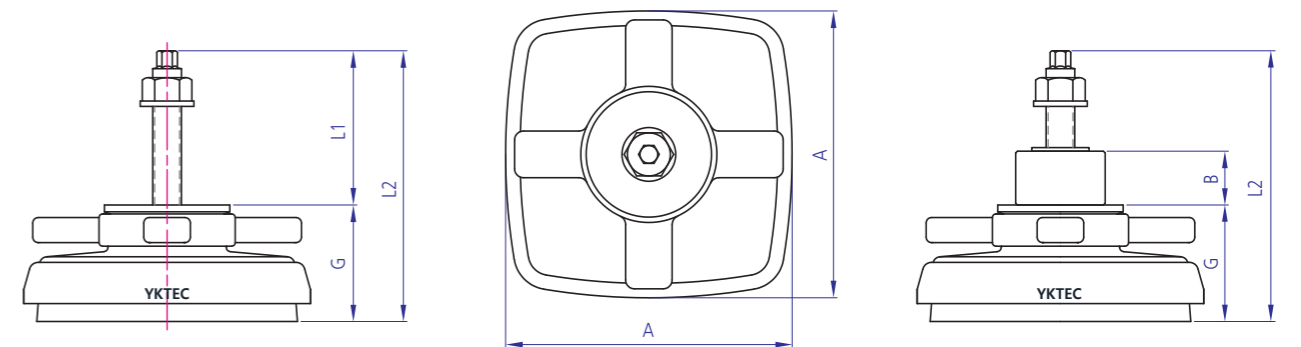
높낮이조절기능 / 경사면 자동보정  
YKLM-130

Technical Data

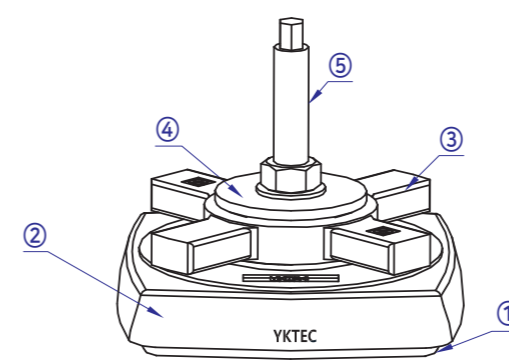
**Material** 볼트, 너트-SS400 / 하부컵-SM45C

**Surface Processing** 볼트, 너트-니켈 / 하부컵-분체도장

**Application** 고하중용 장비 지지용. 바닥고정형 Frame을 별도의 장치없이 바닥에 고정시키기 위해 사용됨.



MODEL	L1	L2	레벨 조절양	G	B	A	M	허용하중(N)
YKLM-130	83	134	20	51	20 or 30	130	M16x2.0	2,800~6,000N
	118	169	20	51	20 or 30	130	M16x2.0	2,800~6,000N
	98	149	20	51	20	130	M20x2.5	2,800~6,000N



Material

NO	품명 PARTS	재질 MATERIALS	표면 처리 TREATMENTS
1	PAD	N.B.R	검정(BLACK)
2	Base	SM45C	분체 도장(Pouder coated)
3	Handle	SM45C	분체 도장(Pouder coated)
4	Tilting와샤	SM45C	니켈 + 니켈
5	Bolt	SS400	니켈 + 니켈



Code : YKLF-LM160

높낮이조절기능 / 경사면 자동보정  
YKLM-160

Technical Data

**Material** 볼트, 너트-SS400 / 하부컵-SM45C

**Surface Processing** 볼트, 너트-니켈 / 하부컵-분체도장

**Application** 고하중용 장비 지지용. 바닥고정형 Frame을 별도의 장치없이 바닥에 고정시키기 위해 사용됨.

높낮이조절기능 / 경사면 자동보정 / 상하 - 좌우 전방향 방진  
YKRM-160

Technical Data

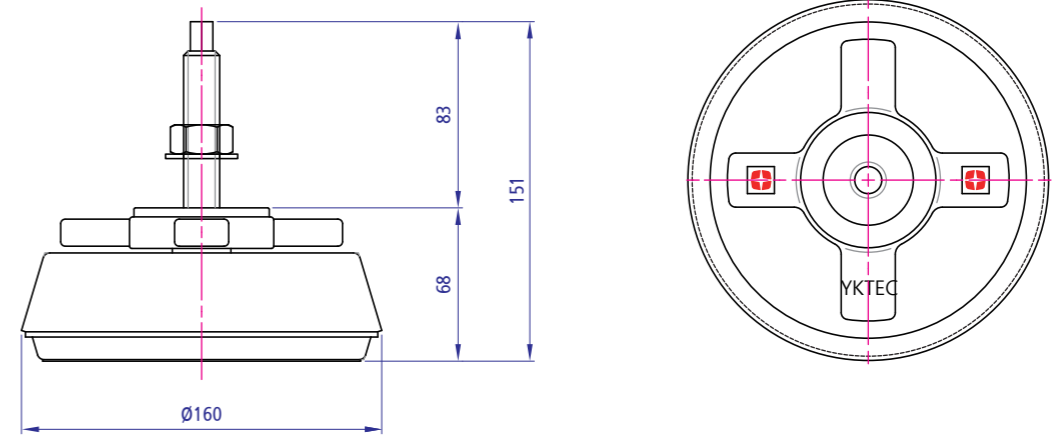
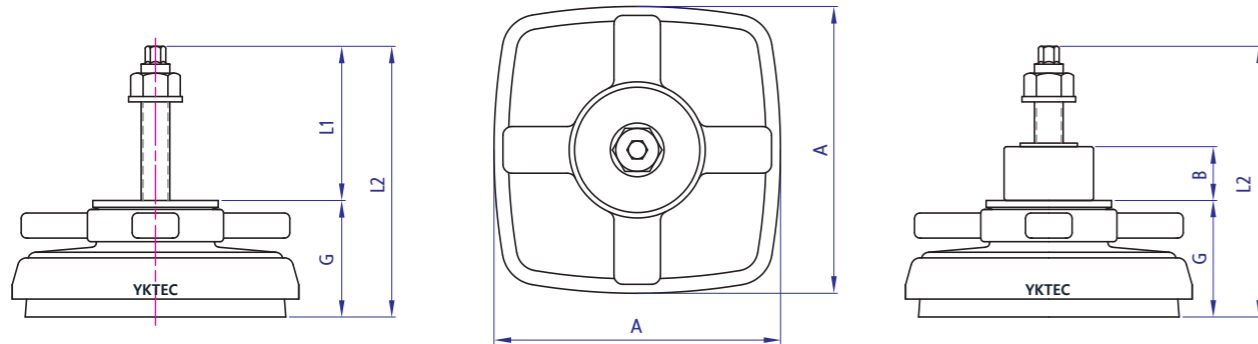
**Material** 볼트, 너트-SS400 / 하부컵-SM45C

**Surface Processing** 볼트, 너트-니켈 / 하부컵-분체도장

**Application** 고하중용 장비 지지용. 바닥고정형 Frame을 별도의 장치없이 바닥에 고정시키기 위해 사용됨.

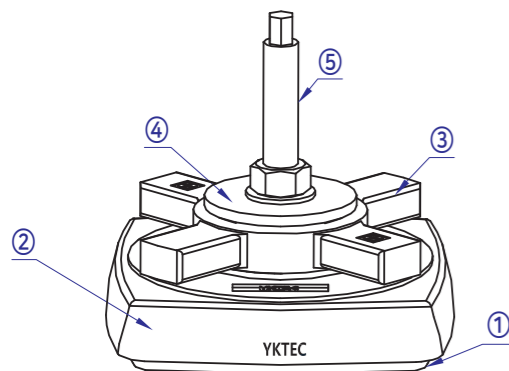


Code : YKLF-RM160



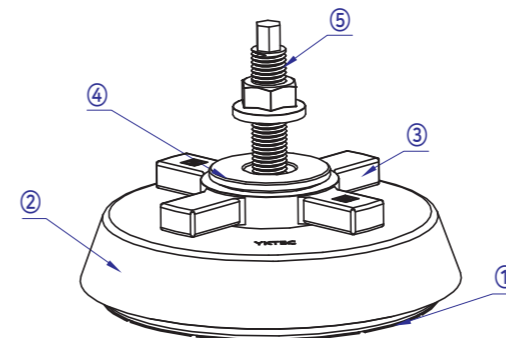
MODEL	L1	L2	레벨 조절양	G	B	A	M	허용하중(N)
YKLM-160	83	148	24	65	-	160	M16x2.0	6,000~12,000N
	86	151	24	65	-	160	M20x2.5	6,000~12,000N

MODEL	L1	L2	레벨 조절양	G	B	S	A	M	허용하중(N)
YKRM-160	83	151	27	68	20	13	Ø160	M20x2.5	12,500~40,000N



Material

NO	품명 PARTS	재질 MATERIALS	표면 처리 TREATMENTS
1	PAD	N.B.R	검정(BLACK)
2	Base	SM45C	분체 도장(Powder coated)
3	Handle	SM45C	분체 도장(Powder coated)
4	Tilting와샤	SM45C	니켈 + 니켈
5	Bolt	SS400	니켈 + 니켈



Material

NO	품명 PARTS	재질 MATERIALS	표면 처리 TREATMENTS
1	PAD	N.B.R	검정(BLACK)
2	Base	SM45C	분체 도장(Powder coated)
3	Handle	SM45C	분체 도장(Powder coated)
4	Tilting와샤	SM45C	니켈 + 니켈
5	Bolt	SS400	니켈 + 니켈



Code : YKLF-RM220

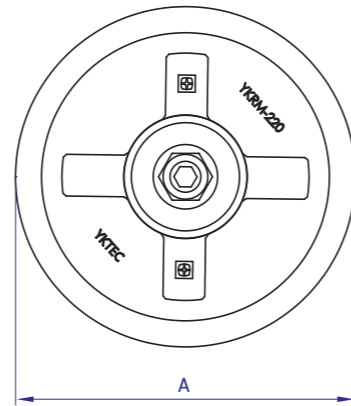
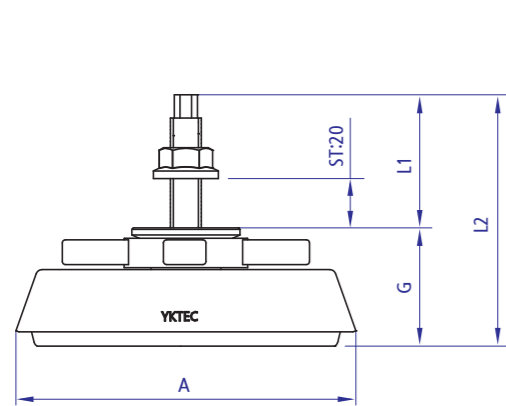
높낮이조절기능 / 경사면 자동보정  
YKRM-220

Technical Data

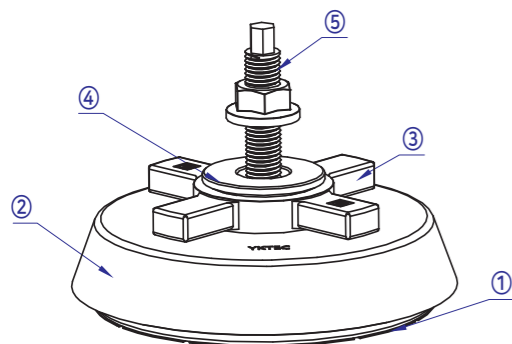
**Material** 볼트, 너트-SS400 / 하부컵-SM45C

**Surface Processing** 볼트, 너트-니켈 / 하부컵-분체도장

**Application** 고하중용 장비 지지용. 바닥고정형 Frame을 별도의 장치없이 바닥에 고정시키기 위해 사용됨.



MODEL	L1	L2	레벨 조절양	G	B	S	A	M	허용하중(N)
YKRM-220	93	170	27	77	27	13	220	M20x2.5	12,500~40,000N



Material

NO	품명 PARTS	재질 MATERIALS	표면 처리 TREATMENTS
1	PAD	N.B.R	검정(BLACK)
2	Base	SM45C	분체 도장(Pouder coated)
3	Handle	SM45C	분체 도장(Pouder coated)
4	Tilting와샤	SM45C	니켈 + 니켈
5	Bolt	SS400	니켈 + 니켈

높낮이조절기능 / 경사면 자동보정 / 상하 - 좌우 전방향 방진  
YKM-190

Technical Data

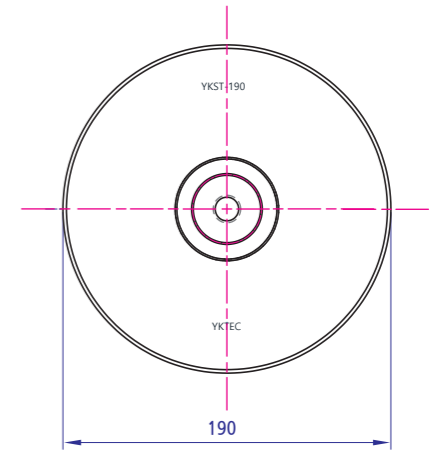
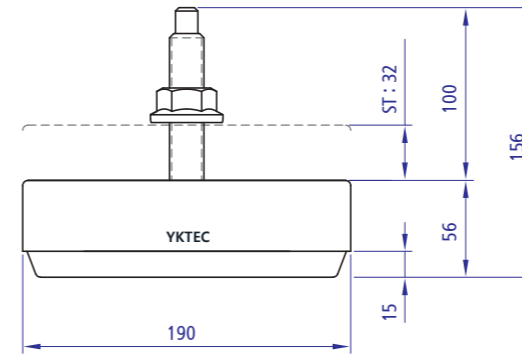
**Material** 볼트, 너트-SS400 / 하부컵-SM45C

**Surface Processing** 볼트, 너트-니켈 / 하부컵-분체도장

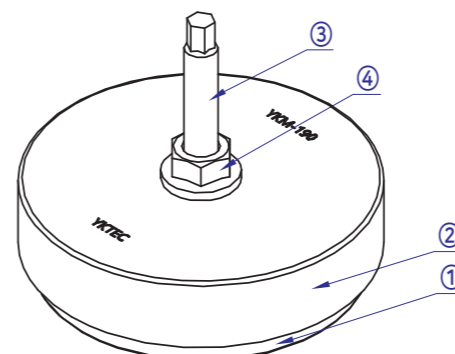
**Application** 이중방진, 높낮이 조절기능, 경사면 자동보정. 상하 - 좌우 전방향 방진



Code : YKLF-MM190



MODEL		최소하중	최대하중
YKM-190	방진성	12,500N	25,000N
	안전성	20,000N	40,000N



Material

NO	품명 PARTS	재질 MATERIALS	표면 처리 TREATMENTS
1	PAD	N.B.R	검정(BLACK)
2	Base	SM45C	분체 도장(Pouder coated)
3	Bolt	SS400	니켈 + 니켈
4	Tilting와샤	SM45C	니켈 + 니켈



Code : YKLF-LM110

높낮이조절기능 / 경사면 자동보정  
YKLM-110

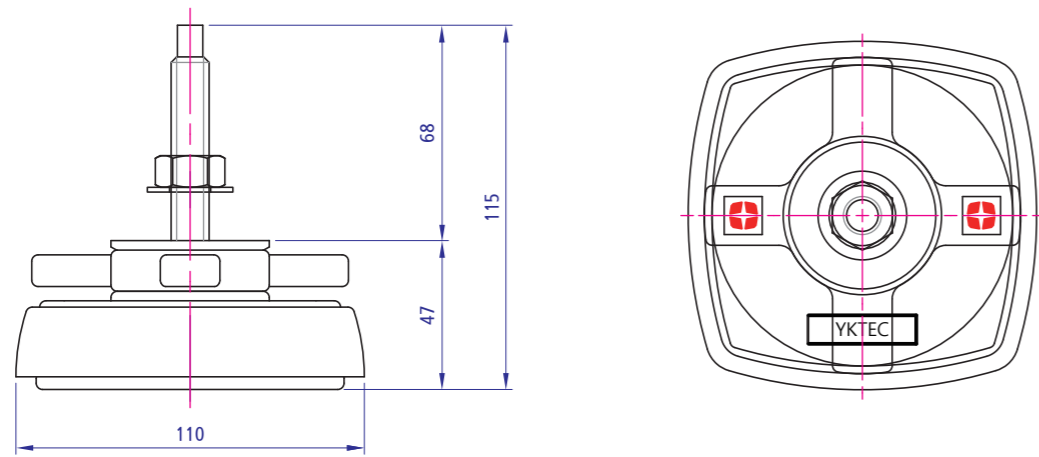
Technical Data

Material 볼트, 너트-SS400 / 하부컵-SM45C

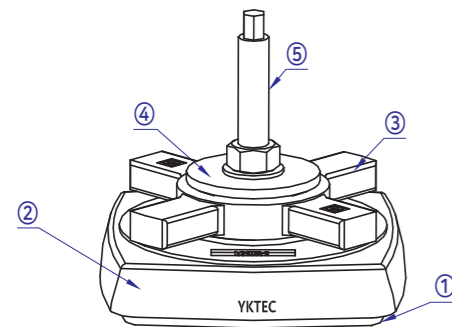
Surface Processing 무전해 니켈도금

고하중용 장비 지지용. 바닥고정형 Frame을 별도의 장치없이 바닥에 고정시키기 위해 사용됨.

※ Option : 주문생산



MODEL	L1	L2	레벨 조절양	G	B	A	M	허용하중(N)
YKLM-110	68	115	20	47	20	110	M12x1.75P	2,800~6,000N



Material

NO	품명 PARTS	재질 MATERIALS	표면 처리 TREATMENTS
1	PAD	N.B.R	검정(BLACK)
2	Base	SM45C	무전해니켈도금
3	Handle	SM45C	무전해니켈도금
4	Tilting와샤	SM45C	무전해니켈도금
5	Bolt	SS400	무전해니켈도금



높낮이조절기능 / 경사면 자동보정  
YKLM-130

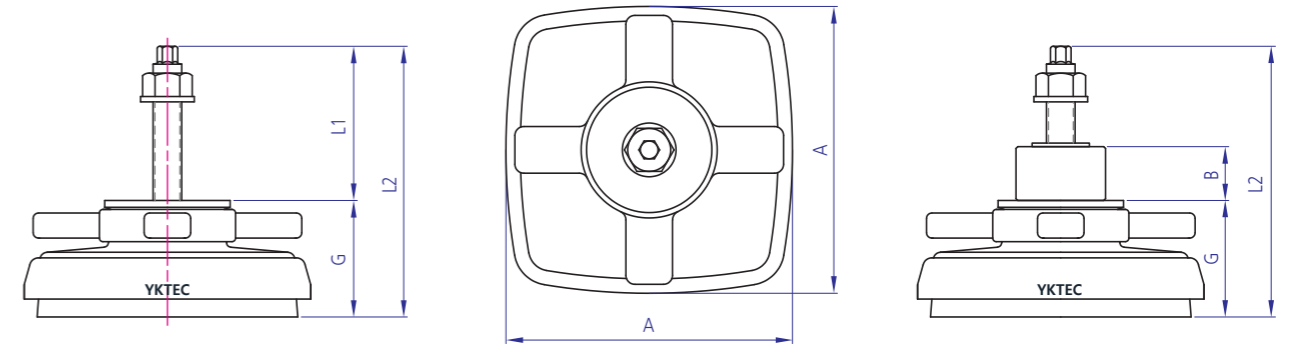
Technical Data

Material 볼트, 너트-SS400 / 하부컵-SM45C

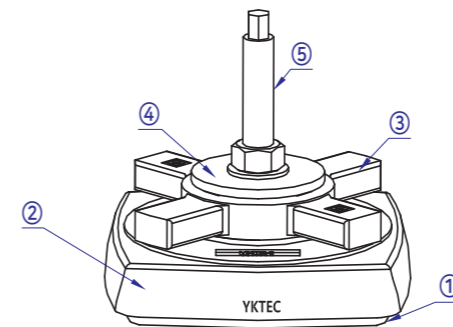
Surface Processing 무전해 니켈도금

고하중용 장비 지지용. 바닥고정형 Frame을 별도의 장치없이 바닥에 고정시키기 위해 사용됨.

※ Option : 주문생산



MODEL	L1	L2	레벨 조절양	G	B	A	M	허용하중(N)
YKLM-130	83	134	20	51	20 or 30	130	M16x2.0	2,800~6,000N
	118	169	20	51	20 or 30	130	M16x2.0	2,800~6,000N
	98	149	20	51	20	130	M20x2.5	2,800~6,000N



Material

NO	품명 PARTS	재질 MATERIALS	표면 처리 TREATMENTS
1	PAD	N.B.R	검정(BLACK)
2	Base	SM45C	무전해니켈도금
3	Handle	SM45C	무전해니켈도금
4	Tilting와샤	SM45C	무전해니켈도금
5	Bolt	SS400	무전해니켈도금

# Levelling Foot

높낮이조절기능 / 경사면 자동보정  
YKLM-160

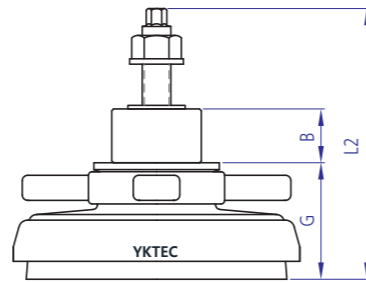
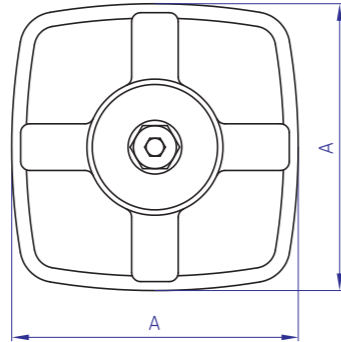
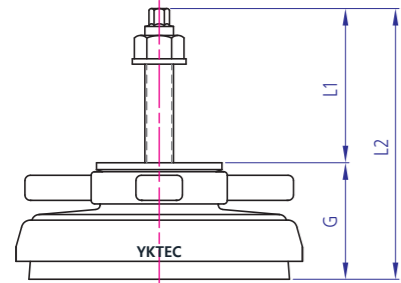
### Technical Data

**Material** 볼트, 너트-SS400 / 하부컵-SM45C

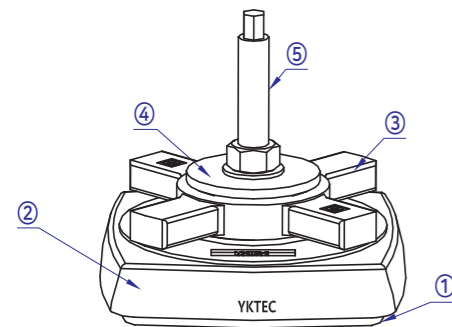
**Surface Processing** 무전해 니켈도금

**Application** 고하중용 장비 지지용. 바닥고정형 Frame을 별도의 장치없이 바닥에 고정시키기 위해 사용됨.

Code : YKLF-LM160



MODEL	L1	L2	레벨 조절양	G	B	A	M	허용하중(N)
YKLM-160	83	148	24	65	-	160	M16x2.0	6,000~12,000N
	86	151	24	65	-	160	M20x2.5	6,000~12,000N



### Material

NO	품명 PARTS	재질 MATERIALS	표면 처리 TREATMENTS
1	PAD	N.B.R	검정(BLACK)
2	Base	SM45C	무전해니켈도금
3	Handle	SM45C	무전해니켈도금
4	Tilting와사	SM45C	무전해니켈도금
5	Bolt	SS400	무전해니켈도금

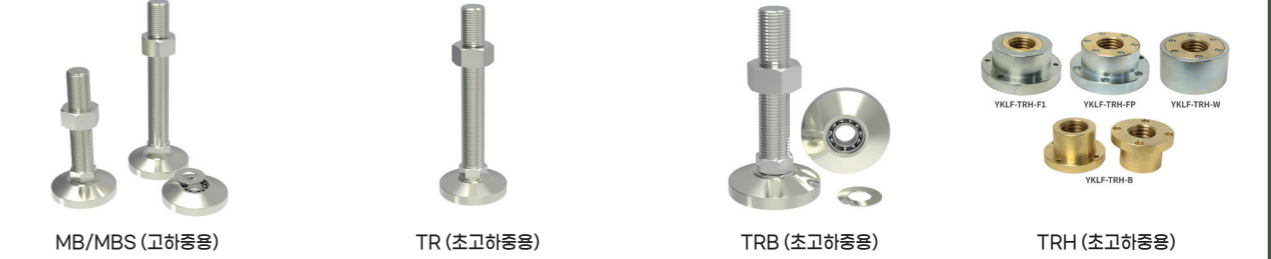
경량  
page  
290  
~  
309



중하중  
page  
310  
~  
325



고하중  
page  
326  
~  
329



기타  
page  
330  
~  
334



2차전지용  
page  
335  
~  
340

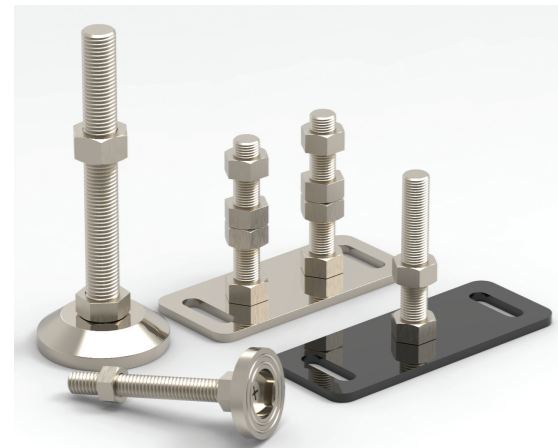
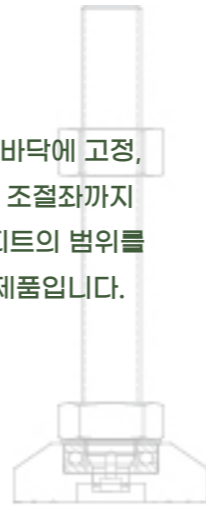


# Leveller

경사진 바닥에서도 사용가능한 각도 조절좌, 미세한 높이까지 조절가능



미끄럼방지 진동방지 별도의 장비 없이 바닥에 고정,  
경사진 바닥에서도 사용이 가능한 각도 조절좌까지  
스테인레스 아연 등 다양한 levelling 피트의 범위를  
제공하는 미세한 높이 조절이 가능한 제품입니다.



▼ 경량 미끄럼 방지용 / 일부품목 각도조절이 가능함 / RAME을 별도의 장치없이 바닥에 고정



경량 프레스



경량 AL캐스팅 양카



경량 기타

▼ 중하중 하중이 많이 걸리는 장비에 적합 / 일부품목 각도조절이 가능함 / RAME을 별도의 장치없이 바닥에 고정



중하중



중하중 아연



중하중 주물

▼ 고하중.초고하중



고하중



초고하중

▼ 기타



2d, 3d 및 상세한 내용은 홈페이지(www.yktec.co.kr) 참조





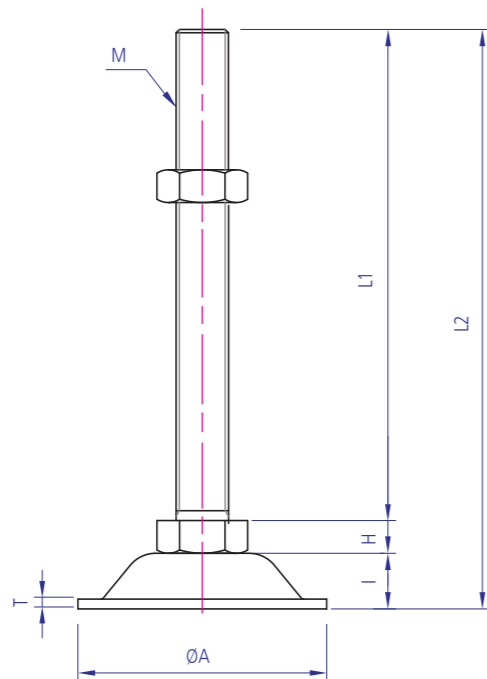
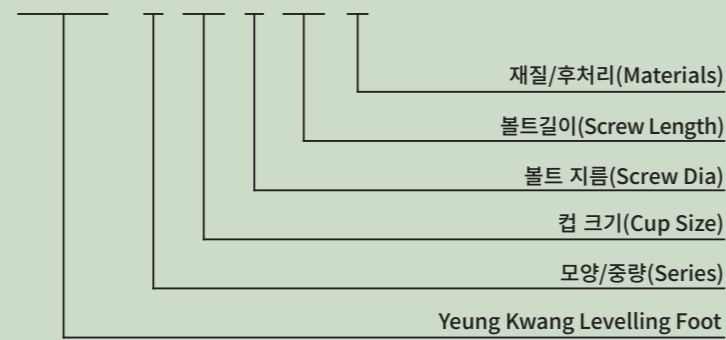
조절좌  
YKLF-P (경량-프레스)

Technical Data

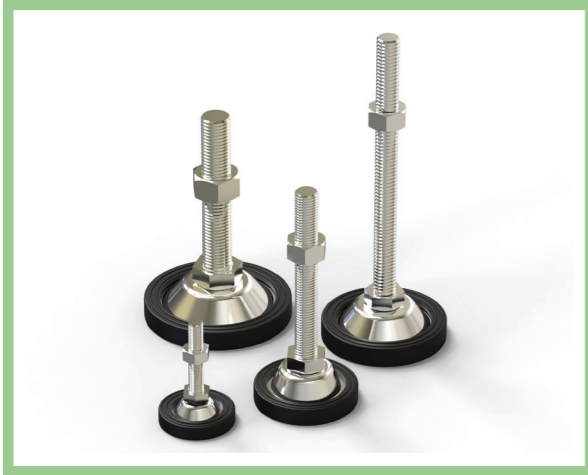
**Material** SS41, SUS304  
**Surface Processing** ZN, NI, PS(포리싱)  
**Application** 경량형 조절좌

Ordering Code

YKLF - P 36 6 40 N



규격	Code(모델명)	Dimension (mm)							표면처리	허용하중 kg/4EA		
		A	M	L1	L2	H	I	T				
YKLF-P 6	36-6X40	YKLF-P36640	36	M6X1.0	40	55	6	9	2T	아연백색 니켈(Ni)	100	
YKLF-P 8	36-8X40	YKLF-P36840		M8X1.25	40	55					200	
YKLF-P 10	36-8X80	YKLF-P36880	50	M10X1.5	80	95	7	15	2.6T (2.5T-SUS)	아연백색 니켈(Ni)	300	
	50-10X60	YKLF-P501060			60	82					500	
YKLF-P 12	50-10X100	YKLF-P5010100	63	M12X1.75	50-10X100	100	122	8	15	3T	아연백색 니켈(Ni)	
	50-12X50	YKLF-P501250			50	73	700					
	50-12X75	YKLF-P501275			75	98	700					
	50-12X100	YKLF-P5012100			100	123	700					
	50-12X125	YKLF-P5012125			125	148	700					
	50-12X150	YKLF-P5012150			150	173	700					
	50-12X200	YKLF-P5012200			200	223	700					
YKLF-P 16	63-12X50	YKLF-P631250	76	M16X2.0	63-12X50	50	73	10	17	3T	아연백색 니켈(Ni)	
	63-12X75	YKLF-P631275			75	98	700					
	63-12X100	YKLF-P6312100			100	123	700					
	63-12X125	YKLF-P6312125			125	148	700					
	63-12X150	YKLF-P6312150			150	173	700					
	63-12X200	YKLF-P6312200			200	223	700					
	76-16X50	YKLF-P761650			76-16X50	50	77					800
	76-16X75	YKLF-P761675			76-16X75	75	102					800
	76-16X100	YKLF-P7616100			76-16X100	100	127					800
	76-16X130	YKLF-P7616130			76-16X130	130	157					800
YKLF-P 20	76-16X150	YKLF-P7616150	95	M20X2.5	76-16X150	150	177	13	22	4.5T (4.0T-SUS)	아연백색 니켈(Ni)	
	76-16X180	YKLF-P7616180			180	207	1000					
	76-16X200	YKLF-P7616200			200	227	1000					
	76-16X250	YKLF-P7616250			250	277	1000					
	76-16X300	YKLF-P7616300			300	327	1000					
	76-20X80	YKLF-P762080			76-20X80	80	110					1500
	76-20X100	YKLF-P7620100			76-20X100	100	130					1500
	76-20X130	YKLF-P7620130			76-20X130	130	160					1500
	76-20X150	YKLF-P7620150			76-20X150	150	180					1500
	76-20X180	YKLF-P7620180			76-20X180	180	210					1500
YKLF-P 24	76-20X200	YKLF-P7620200	95 / 105	M24X3.0	76-20X200	200	230	16	22/25	4.5T/6T	아연백색 니켈(Ni)	
	76-20X250	YKLF-P7620250			250	280	1500					
	76-20X300	YKLF-P7620300			300	330	1500					
	95-20X80	YKLF-P952080			95-20X80	80	115					2200 / 2500
	95-20X100	YKLF-P9520100			95-20X100	100	135					2200 / 2500
	95-20X130	YKLF-P9520130			95-20X130	130	165					2200 / 2500
	95-20X150	YKLF-P9520150			95-20X150	150	185					2200 / 2500
	95-20X180	YKLF-P9520180			95-20X180	180	215					2200 / 2500
YKLF-P 24	95-20X200	YKLF-P9520200	95 / 105	M24X3.0	95-20X200	200	235	16	22/25	4.5T/6T	아연백색 니켈(Ni)	
	95-20X250	YKLF-P9520250			250	285	2200 / 2500					
	95-20X300	YKLF-P9520300			300	335	2200 / 2500					
	95/105-24X100	YKLF-P9524100 / YKLF-P10524100			95/105-24X100	100	138/141					2200 / 2500
95/105-24X150	YKLF-P9524150 / YKLF-P10524150	95/105-24X150	150	188/191	2200 / 2500							
95/105-24X200	YKLF-P9524200 / YKLF-P10524200	95/105-24X200	200	238/241	2200 / 2500							
95/105-24X250	YKLF-P9524250 / YKLF-P10524250	95/105-24X250	250	281/291	2200 / 2500							



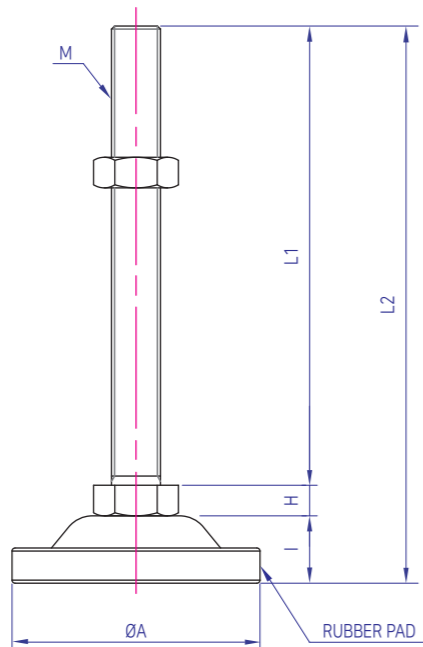
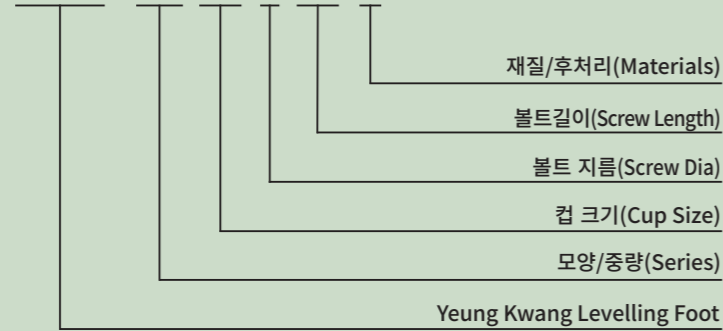
조절좌  
YKLF-PR (프레스-방진)

Technical Data

**Material** 볼트, 너트 - SS41, SUS304 / PAD - NBR  
**Surface Processing** Zn(백색), Ni(니켈), PS(포리싱)  
**Application** 미끄럼방지용

Ordering Code

YKLF - PR 40 6 40 N



규격	Code(모델명)	Dimension (mm)							표면처리	허용하중 kg/4EA	
		A	M	L1	L2	H	I	T			
YKLF-PR 6	40-6X40 YKLF-PR40640	40	M6X1.0	40	59	6	13	2T		100	
YKLF-PR 8	40-8X40 YKLF-PR40840 40-8X80 YKLF-PR40880		M8X1.25	40	59					80	99
YKLF-PR 10	55-10X60 YKLF-PR551060 55-10X100 YKLF-PR5510100	55	M10X1.5	60	87	7	20	2.6T (2.5T)		300	
	55-12X50 YKLF-PR551250		M12X1.75	50	78					8	500
	55-12X75 YKLF-PR551275			75	103						
	55-12X100 YKLF-PR5512100			100	128						
	55-12X125 YKLF-PR5512125	125		152							
YKLF-PR 12	55-12X150 YKLF-PR5512150	68	M12X1.75	150	178	8	21	3T	아연백색 니켈(Ni)  포리싱(PL) 일반	600	
	68-12X50 YKLF-PR681250			50	79						
	68-12X75 YKLF-PR681275			75	104						
	68-12X100 YKLF-PR6812100			100	129						
	68-12X125 YKLF-PR6812125			125	154						
	68-12X150 YKLF-PR6812150			150	179						
	68-12X200 YKLF-PR6812200	200	229								
YKLF-PR 16	68-16X50 YKLF-PR681650 68-16X75 YKLF-PR681675 68-16X100 YKLF-PR6816100 68-16X130 YKLF-PR6816130 68-16X150 YKLF-PR6816150 68-16X180 YKLF-PR6816180 68-16X200 YKLF-PR6816200	81	M16X2.0	50	81	10	23	3T		700	
	81-16X50 YKLF-PR811650			50	83						
	81-16X75 YKLF-PR811675			75	108						
	81-16X100 YKLF-PR8116100			100	133						
	81-16X130 YKLF-PR8116130			130	163						
	81-16X150 YKLF-PR8116150			150	183						
	81-16X180 YKLF-PR8116180			180	213						
	81-16X200 YKLF-PR8116200			200	233						
	81-16X250 YKLF-PR8116250	250	283								
	81-16X300 YKLF-PR8116300	300	323								
YKLF-PR 20	81-20X80 YKLF-PR812080 81-20X100 YKLF-PR8120100 81-20X130 YKLF-PR8120130 81-20X150 YKLF-PR8120150 81-20X180 YKLF-PR8120180 81-20X200 YKLF-PR8120200 81-20X250 YKLF-PR8120250 81-20X300 YKLF-PR8120300	103	M 20X2.5	80	116	13	29	4.5T (4.0T)		1000	
	103-20X80 YKLF-PR1032080			80	122						
	103-20X100 YKLF-PR10320100			100	142						
	103-20X130 YKLF-PR10320130			130	172						
	103-20X150 YKLF-PR10320150			150	192						
	103-20X180 YKLF-PR10320180			180	222						
	103-20X200 YKLF-PR10320200			200	242						
	103-20X250 YKLF-PR10320250			250	292						
	103-20X300 YKLF-PR10320300			300	342						



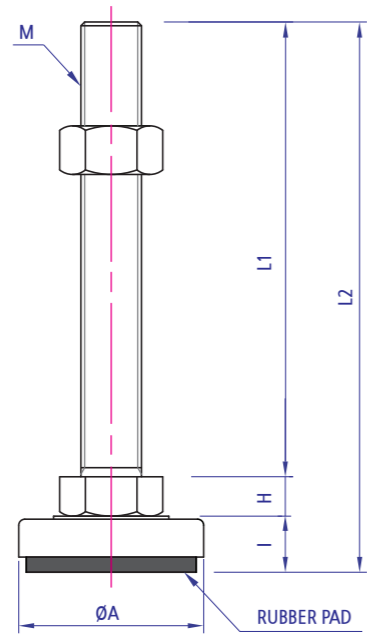
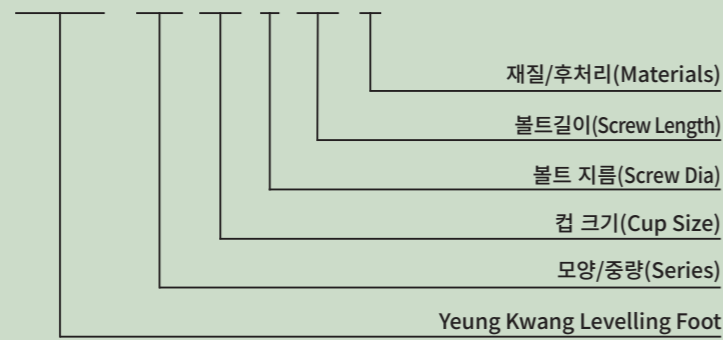
조절좌  
YKLF-ER (커버-방진)

Technical Data

**Material** STEEL(표준), STAINLESS(주문사양)  
**Surface Processing** NI(니켈), PS(포라싱)  
**Application** 미끄럼 방지용 조절좌

Ordering Code

YKLF - ER 30 6 40 N



규격	Code(모델)	Dimension (mm)							표면처리	허용하중 kg/4EA
		A	M	L1	L2	H	I	하부		
YKLF-ER 6	30-6X40 YKLF-ER30640	30	M6X1.0	40	61	6	15	1.5T	니켈	100
YKLF-ER 8	30-8X40 YKLF-ER30840		M8X1.25	40	61					200
YKLF-ER 6	30-8X80 YKLF-ER30880	30	M8X1.25	80	101	6	15	1.5T	니켈	100
YKLF-ER 6	40-6X40 YKLF-ER40640			40	63					200
YKLF-ER 8	40-8X40 YKLF-ER40840	40	M8X1.25	40	63	6	17	1.5T	니켈	200
YKLF-ER 8	40-8X80 YKLF-ER40880			80	103					300
YKLF-ER10	48-10X60 YKLF-ER481060	48	M10X1.5	60	84.5	7	17.5	2T	니켈	300
YKLF-ER10	48-10X100 YKLF-ER4810100			100	124.5					500
YKLF-ER12	48-12X50 YKLF-ER481250	48	M12X1.75	50	75.5	8	17.5	2T	니켈	500
YKLF-ER12	48-12X75 YKLF-ER481275			75	100.5					700
YKLF-ER12	48-12X100 YKLF-ER4812100			100	125.5					800
YKLF-ER12	48-12X125 YKLF-ER4812125			125	150.5					900
YKLF-ER12	48-12X150 YKLF-ER4812150			150	175.5					1000
YKLF-ER12	48-12X200 YKLF-ER4812200			200	225.5					1200
YKLF-ER16	48-16X50 YKLF-ER481650	48	M16X2.0	50	77.5	10	18.5	2.3T	니켈	700
YKLF-ER16	48-16X75 YKLF-ER481675			75	102.5					800
YKLF-ER16	48-16X100 YKLF-ER4816100			100	127.5					900
YKLF-ER16	48-16X130 YKLF-ER4816130			130	157.5					1000
YKLF-ER16	48-16X150 YKLF-ER4816150			150	177.5					1100
YKLF-ER16	48-16X180 YKLF-ER4816180			180	207.5					1200
YKLF-ER12	61-12X50 YKLF-ER611250	61	M12X1.75	50	76.5	8	18.5	2T	니켈	600
YKLF-ER12	61-12X75 YKLF-ER611275			75	101.5					700
YKLF-ER12	61-12X100 YKLF-ER6112100			100	126.5					800
YKLF-ER12	61-12X125 YKLF-ER6112125			125	151.5					900
YKLF-ER12	61-12X150 YKLF-ER6112150			150	176.5					1000
YKLF-ER12	61-12X200 YKLF-ER6112200			200	226.5					1200
YKLF-ER16	61-16X50 YKLF-ER611650	61	M16X2.0	50	78.5	10	18.5	2.3T	니켈	800
YKLF-ER16	61-16X75 YKLF-ER611675			75	103.5					900
YKLF-ER16	61-16X100 YKLF-ER6116100			100	128.5					1000
YKLF-ER16	61-16X130 YKLF-ER6116130			130	158.5					1100
YKLF-ER16	61-16X150 YKLF-ER6116150			150	178.5					1200
YKLF-ER16	61-16X180 YKLF-ER6116180			180	208.5					1300
YKLF-ER20	61-16X200 YKLF-ER6116200	61	M16X2.0	200	228.5	10	18.5	2.3T	니켈	1000
YKLF-ER20	61-16X250 YKLF-ER6116250			250	278.5					1100
YKLF-ER20	61-20X80 YKLF-ER612080			80	111.5					1200
YKLF-ER20	61-20X100 YKLF-ER6120100			100	131.5					1300
YKLF-ER20	61-20X130 YKLF-ER6120130			130	161.5					1400
YKLF-ER20	61-20X150 YKLF-ER6120150			150	181.5					1500
YKLF-ER20	61-20X180 YKLF-ER6120180	180	211.5	1600						
YKLF-ER20	61-20X200 YKLF-ER6120200	72	M20X2.5	200	231.5	13	20	2.3T (2.0T)	니켈	1000
YKLF-ER20	61-20X250 YKLF-ER6120250			250	281.5					1100
YKLF-ER16	72-16X50 YKLF-ER721650			50	80					1200
YKLF-ER16	72-16X75 YKLF-ER721675			75	105					1300
YKLF-ER16	72-16X100 YKLF-ER7216100			100	130					1400
YKLF-ER16	72-16X150 YKLF-ER7216150			150	180					1500
YKLF-ER16	72-16X180 YKLF-ER7216180	180	210	1600						
YKLF-ER16	72-16X200 YKLF-ER7216200	200	230	1700						
YKLF-ER16	72-16X250 YKLF-ER7216250	250	280	1800						
YKLF-ER 20	72-20X80 YKLF-ER722080	72	M20X2.5	80	113	13	20	2.3T (2.0T)	니켈	900
YKLF-ER 20	72-20X100 YKLF-ER7220100			100	133					1000
YKLF-ER 20	72-20X130 YKLF-ER7220130			130	163					1100
YKLF-ER 20	72-20X150 YKLF-ER7220150			150	183					1200
YKLF-ER 20	72-20X180 YKLF-ER7220180			180	213					1300
YKLF-ER 20	72-20X200 YKLF-ER7220200			200	233					1400
YKLF-ER 20	72-20X250 YKLF-ER7220250	250	283	1500						

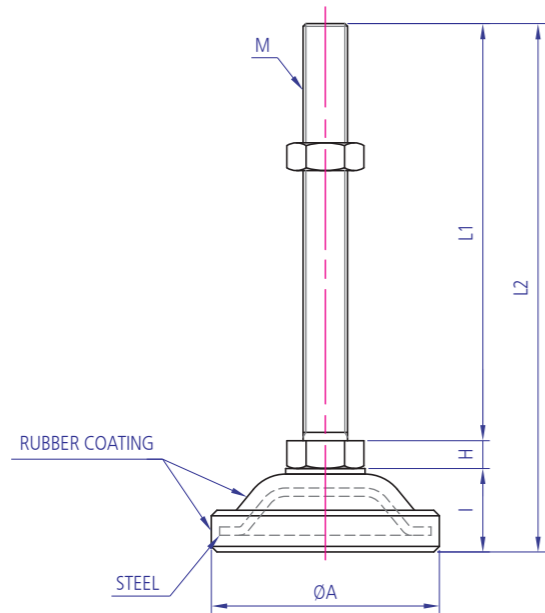
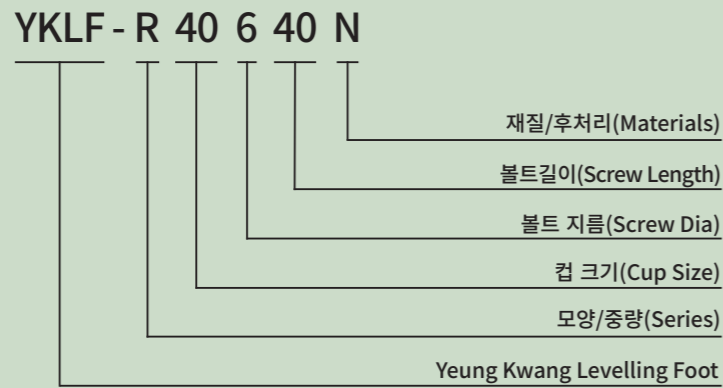


조절좌  
YKLF-R (방진-고무코팅컵)

Technical Data

**Material** 볼트, 너트 - SS41, SUS304 / PAD - NBR  
**Surface Processing** Zn(백색), Ni(니켈), PS(폴리싱)  
**Application** 미끄럼 방지용

Ordering Code



규격	Code(모델)	Dimension (mm)							표면처리	허용하중 kg/4EA
		A	M	L1	L2	H	I	하부		
YKLF-R 6	40-6X40 YKLF-R40640	40	M6X1.0	40	62	6	16	2T	아연백색 니켈 일반	100
YKLF-R 8	40-8X40 YKLF-R40840 40-8X80 YKLF-R40880		M8X1.25	40 80	62 102					200
YKLF-R 10	55-10X60 YKLF-R551060 55-10X100 YKLF-R5510100	55	M10X1.5	60 100	91 131	7	24	2.6T (2.5T)	아연백색 니켈 일반	300
YKLF-R 12	68-12X50 YKLF-R681250 68-12X75 YKLF-R681275 68-12X100 YKLF-R6812100 68-12X125 YKLF-R6812125 68-12X150 YKLF-R6812150 68-12X200 YKLF-R6812200	68	M12X1.75	50 75 100 125 150 200	83 108 133 158 183 233	8	25	아연백색 니켈 일반		600
YKLF-R 16	82-16X50 YKLF-R821650 82-16X75 YKLF-R821675 82-16X100 YKLF-R8216100 82-16X130 YKLF-R8216130 82-16X150 YKLF-R8216150 82-16X180 YKLF-R8216180 82-16X200 YKLF-R8216200 82-16X250 YKLF-R8216250	82	M16X2.0	50 75 100 130 150 180 200 250	90 115 140 170 190 220 240 290	10	30		아연백색 니켈 일반	800
YKLF-R 20	82-20X80 YKLF-R822080 82-20X100 YKLF-R8220100 82-20X130 YKLF-R8220130 82-20X150 YKLF-R8220150 82-20X180 YKLF-R8220180 82-20X200 YKLF-R8220200 82-20X250 YKLF-R8220250	82	M20X2.5	80 100 130 150 180 200 250	123 133 163 183 213 233 283	13	30	아연백색 니켈 일반		1000



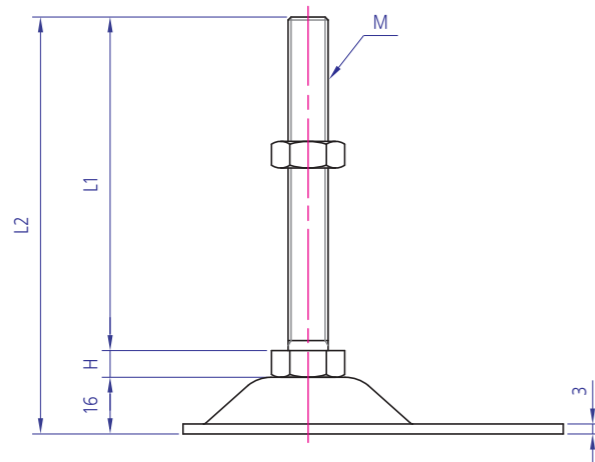
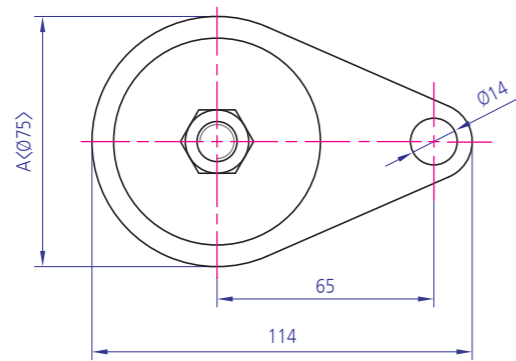
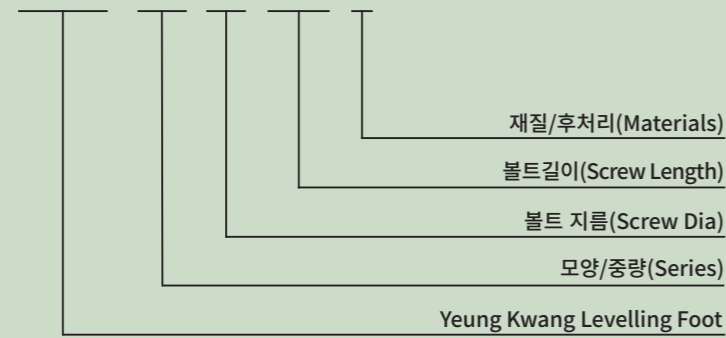
조절좌  
YKLF-A A-TYPE (앙카형)

Technical Data

**Material** SS41, SUS304(주문사양), ZN(아연)  
**Surface Processing** NI(니켈), PS(폴리싱), EL(무전해)  
**Application** FRAME를 별도의 장치없이 바닥에 고정 시키기 위해 사용됨

Ordering Code

YKLF - AA 12 100 N



규격	Code(모델)	Dimension (mm)					표면처리	허용하중 kg/4EA			
		A	M	L1	L2	H					
YKLF-AA 12	75-12X100	YKLF-AA12100	75	M12X1.75	100	124	8	니켈	500		
	75-12X125	YKLF-AA12125			125	154					
	75-12X150	YKLF-AA12150			150	174					
YKLF-AA 16	75-16X90	YKLF-AA1690		75	M16X2.0	90	116		10	니켈	800
	75-16X100	YKLF-AA16100				100	126				
	75-16X130	YKLF-AA16130				130	156				
	75-16X150	YKLF-AA16150				150	176				
	75-16X180	YKLF-AA16180				180	206				
	75-16X200	YKLF-AA16200				200	226				
YKLF-AA 20	75-20X90	YKLF-AA2090	75	M20X2.5	90	119	13	니켈	1000		
	75-20X100	YKLF-AA20100			100	129					
	75-20X130	YKLF-AA20130			130	159					
	75-20X150	YKLF-AA20150			150	179					
	75-20X180	YKLF-AA20180			180	209					
	75-20X200	YKLF-AA20200			200	229					



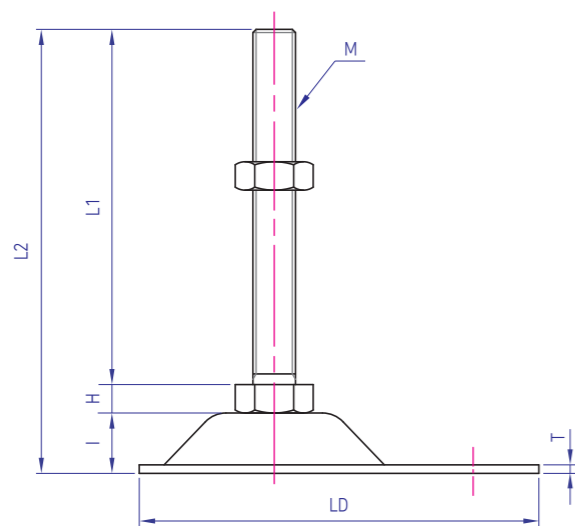
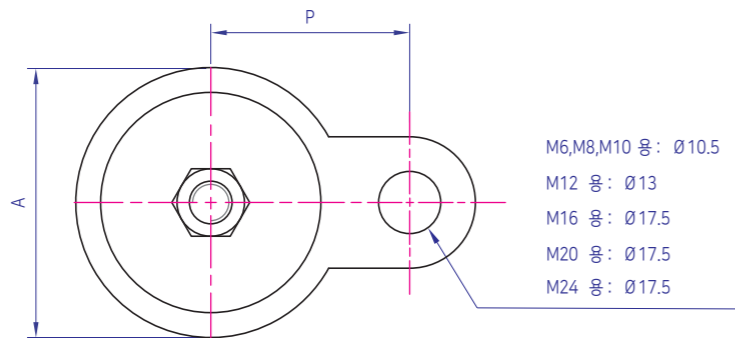
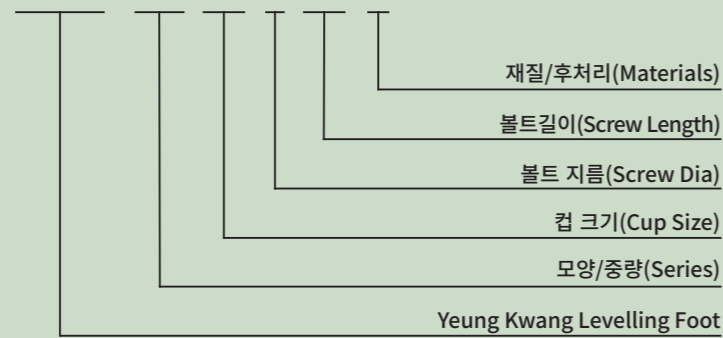
조절좌  
YKLF-A B-TYPE (양카형)

Technical Data

**Material** SS41, SUS304(주문사양), ZN(아연)  
**Surface Processing** NI(니켈), PS(폴리싱), EL(무전해)  
**Application** FRAME를 별도의 장치없이 바닥에 고정 시키기 위해 사용됨

Ordering Code

YKLF - AB 42 6 40 N



규격	Code(모델)	Dimension (mm)										표면처리	허용하중 kg/4EA					
		A	M	L1	L2	H	I	LD	P	T								
YKLF-AB 6	42-6X40	YKLF-AB42640	42	M6X1.0	40	58	6	12	58.5	26.5	2.6T 2.5T (SUS304)	아연백색 니켈 일반 폴리싱	100					
YKLF-AB 8	42-8X40	YKLF-AB42840		M8X1.25	40	58							200					
YKLF-AB 10	42-8X80	YKLF-AB42880		M10X1.5	80	98	300											
YKLF-AB 12	42-10X60	YKLF-AB421060	63	M12X1.75	60	79	7	15	84	39	3T	아연백색 니켈 일반 폴리싱	300					
	42-10X100	YKLF-AB4210100			100	119							600					
	63-12X50	YKLF-AB631250			50	73	8	15	84	39			600					
	63-12X75	YKLF-AB631275			75	98												
	63-12X100	YKLF-AB6312100			100	123												
63-12X125	YKLF-AB6312125	125	148															
63-12X150	YKLF-AB6312150	150	173															
YKLF-AB 16	63-12X200	YKLF-AB6312200	76	M16X2.0	200	223	10	17	112	56	3T	아연백색 니켈 일반 폴리싱	800					
	76-16X75	YKLF-AB761675			75	102												
	76-16X100	YKLF-AB7616100			100	127												
	76-16X130	YKLF-AB7616130			130	152												
	76-16X150	YKLF-AB7616150			150	177												
	76-16X180	YKLF-AB7616180			180	207												
	76-16X200	YKLF-AB7616200			200	227												
	76-16X250	YKLF-AB7616250			250	277												
YKLF-AB 20	76-16X300	YKLF-AB7616300	76	M20X2.5	300	327	13	22	133	67	4.5T (4.0T)	아연백색 니켈 일반 폴리싱	1000					
	76-20X80	YKLF-AB762080			80	110												
	76-20X100	YKLF-AB7620100			100	130												
	76-20X130	YKLF-AB7620130			130	160												
	76-20X150	YKLF-AB7620150			150	180												
	76-20X180	YKLF-AB7620180			180	210												
	76-20X200	YKLF-AB7620200			200	230												
	76-20X250	YKLF-AB7620250			250	280												
	76-20X300	YKLF-AB7620300			300	330												
	YKLF-AB 24	95-20X80			YKLF-AB952080	95	M20X2.5	80	115	13			22	133	67	4.5T (4.0T)	아연백색 니켈 일반 폴리싱	1500
95-20X100		YKLF-AB9520100	100	135														
95-20X130		YKLF-AB9520130	130	165														
95-20X150		YKLF-AB9520150	150	185														
95-20X180		YKLF-AB9520180	180	215														
95-20X200		YKLF-AB9520200	200	235														
95-20X250		YKLF-AB9520250	250	285														
95-20X300		YKLF-AB9520300	300	335														
YKLF-AB 24		105-24X100	YKLF-AB10524100	95 105	M24X3.0			100	138/141	16	25	145.5	73	6T	아연백색 니켈 일반 폴리싱			2500
		105-24X150	YKLF-AB10524150					150	188/191									
	105-24X200	YKLF-AB10524200	200			238/241												
	105-24X250	YKLF-AB10524250	250			288/291												

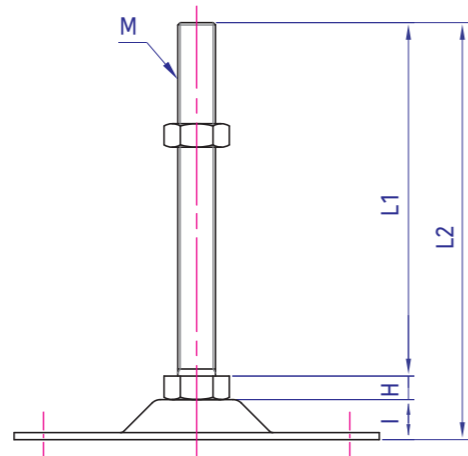
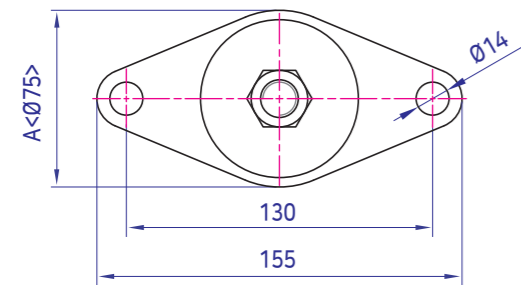
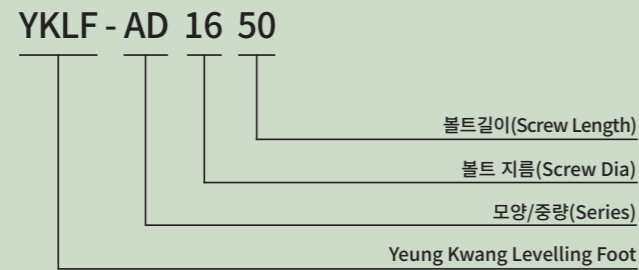


조절좌  
YKLF-AD (더블앙카)

Technical Data

**Material** SS41  
**Surface Processing** NI(니켈)  
**Application** FRAME을 별도의 장치없이 바닥에 고정 시키기 위해 사용됨

Ordering Code



규격	Code(모델)	Dimension (mm)							표면처리	허용하중 kg/4EA
		M	L1	L2	H	I	하부			
YKLF-AD 16	16X50	M16X2.0	50	77	10	17	3.0T	니켈	1200 (1400)	
	16X80		80	107						
	16X100		100	127						
	16X130		130	157						
	16X150		150	177						
	16X180		180	207						
	16X200		200	227						

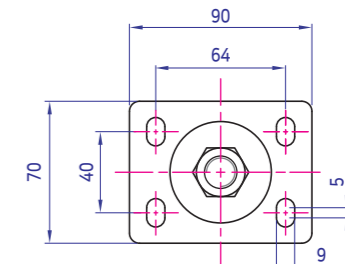
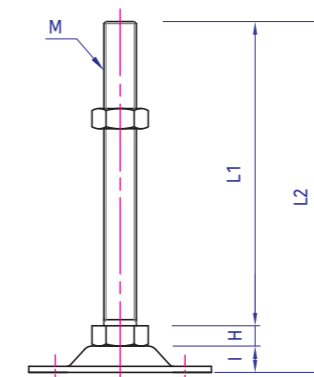
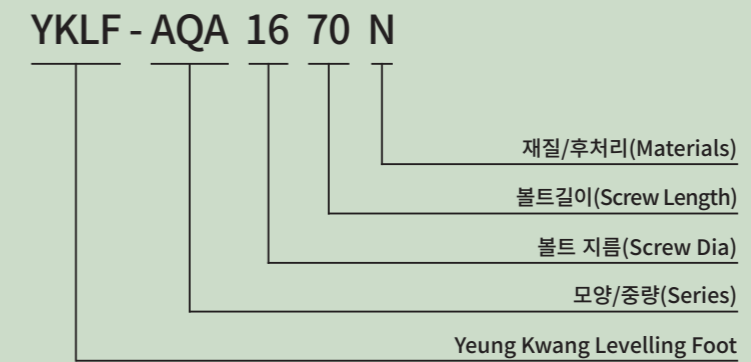
※ 주문사양 : 16 X 60, 16 X 65, 16 X 70, 16 X 90

조절좌  
YKLF-AQ A-TYPE (사각앙카)

Technical Data

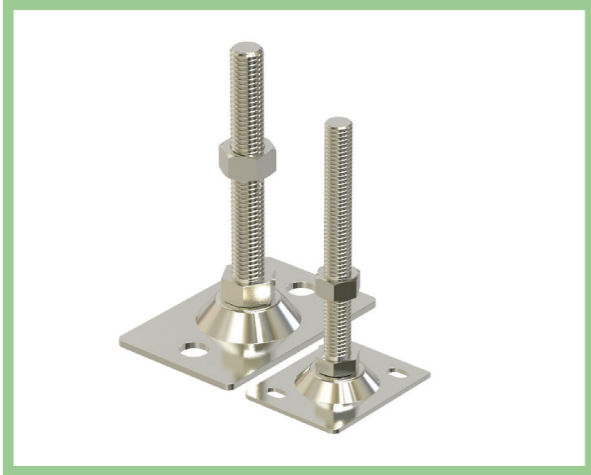
**Material** STEEL(표준)  
**Surface Processing** NI(니켈)  
**Application** FRAME을 별도의 장치없이 바닥에 고정 시키기 위해 사용됨

Ordering Code



규격	Code(모델)	Dimension (mm)							표면처리	허용하중 kg/4EA
		A	M	L1	L2	H	I	하부		
YKLF-AQA16	16X70	7090	M16X2.0	70	93	10	13	3T	니켈	800
	16X90			90	113					
	16X100			100	123					
	16X130			130	148					
	16X150			150	173					
	16X200			200	223					
YKLF-AQA 20	20X80	7090	M20X2.5	80	106	13	13	3T	니켈	1000
	20X90			90	116					
	20X100			100	126					
	20X125			125	151					
	20X150			150	176					
	20X180			180	206					
	20X200			250	226					

※ 기타 특수사양은 특수제작함.

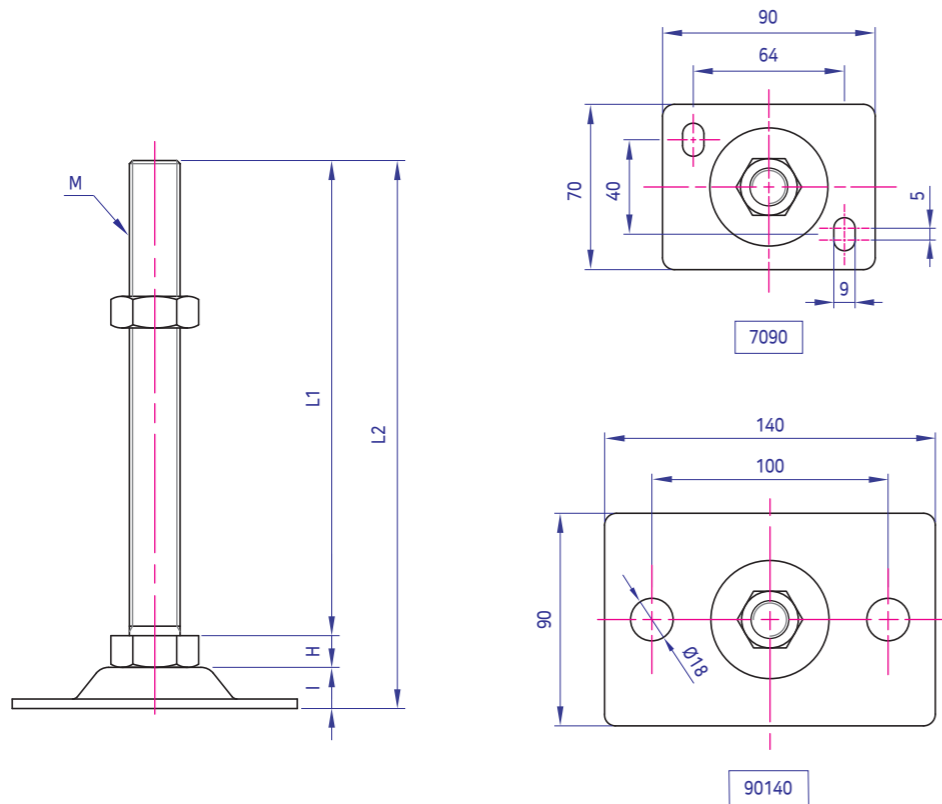
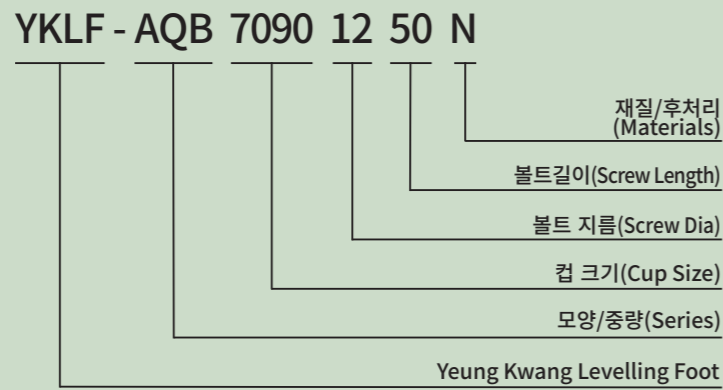


조절좌  
YKLF-AQ B-TYPE (사각양카)

Technical Data

**Material** STEEL(표준), STAINLESS(주문사양)  
**Surface Processing** Zn(백색), Ni(니켈), PS(폴리싱)  
**Application** FRAME을 별도의 장치없이 바닥에 고정 시키기 위해 사용됨

Ordering Code



규격	Code(모델)	Dimension (mm)							표면처리	허용하중 kg/4EA	
		A	M	L1	L2	H	I	하부			
YKLF-AQB 12	12X50	YKLF-AQB70901250	7090	M12X1.75	50	71	8	13	3T	아연백색 니켈 일반 폴리싱	500
	12X75	YKLF-AQB70901275			75	96					
	12X100	YKLF-AQB709012100			100	121					
	12X125	YKLF-AQB709012125			125	146					
	12X150	YKLF-AQB709012150			150	171					
	12X200	YKLF-AQB709012200			200	221					
YKLF-AQB 16	16X75	YKLF-AQB70901675	7090	M16X2.0	75	98	10	13	3T	아연백색 니켈 일반 폴리싱	800
	16X100	YKLF-AQB709016100			100	123					
	16X130	YKLF-AQB709016130			130	153					
	16X150	YKLF-AQB709016150			150	173					
	16X200	YKLF-AQB709016200			200	223					
	16X250	YKLF-AQB709016250			250	273					
YKLF-AQB 20	20X80	YKLF-AQB70902080	7090	M20X2.5	80	106	13	20	4.5T (4.0T)	아연백색 니켈 일반 폴리싱	1000
	20X100	YKLF-AQB709020100			100	126					
	20X130	YKLF-AQB709020130			130	156					
	20X150	YKLF-AQB709020150			150	176					
	20X180	YKLF-AQB709020180			180	206					
	20X200	YKLF-AQB709020200			200	226					
YKLF-AQB 20	20X250	YKLF-AQB709020250	90140	M20X2.5	250	276	13	20	4.5T (4.0T)	아연백색 니켈 일반 폴리싱	1500
	20X80	YKLF-AQB901402080			80	113					
	20X100	YKLF-AQB9014020100			100	133					
	20X130	YKLF-AQB9014020130			130	163					
	20X150	YKLF-AQB9014020150			150	183					
	20X180	YKLF-AQB9014020180			180	213					
YKLF-AQB 24	20X200	YKLF-AQB9014020200	90140	M20X2.5	200	233	16	20	4.5T (4.0T)	아연백색 니켈 일반 폴리싱	2000
	20X250	YKLF-AQB9014020250			250	283					
	24X100	YKLF-AQB9014024100			100	136					
	24X150	YKLF-AQB9014024150			150	186					
	24X200	YKLF-AQB9014024200			200	236					
24X250	YKLF-AQB9014024250	250	286								

※ 기타 특수사양은 특수제작함.





조절좌  
YKLF-FA SERIES

Technical Data

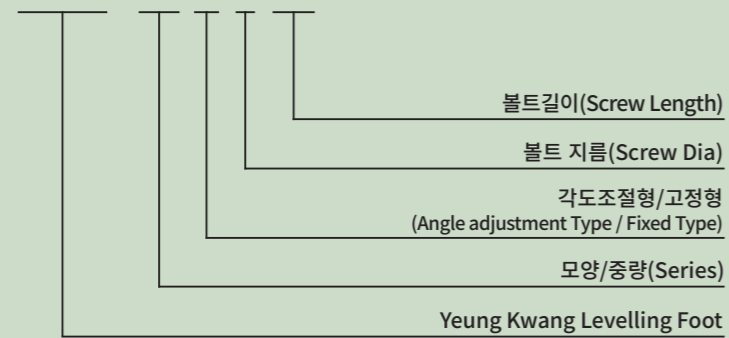
**Material** 볼트, 너트 - SS41 / PAD - NBR

**Surface Processing** Zn(백색)

**Application** 경량방진형으로 일부품목 각도조절이 가능함

Ordering Code

YKLF - FA A 8 38



조절좌  
YKLF-A LAF95120



Technical Data

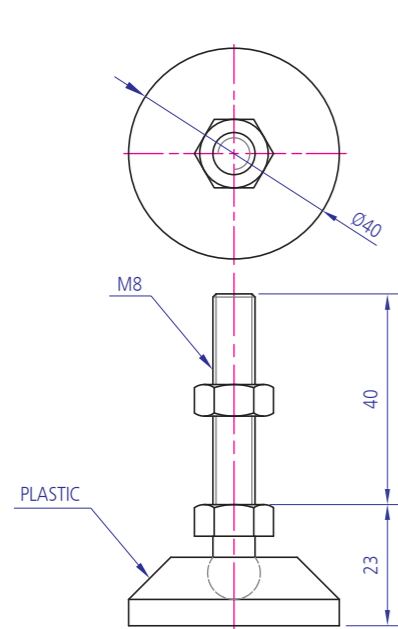
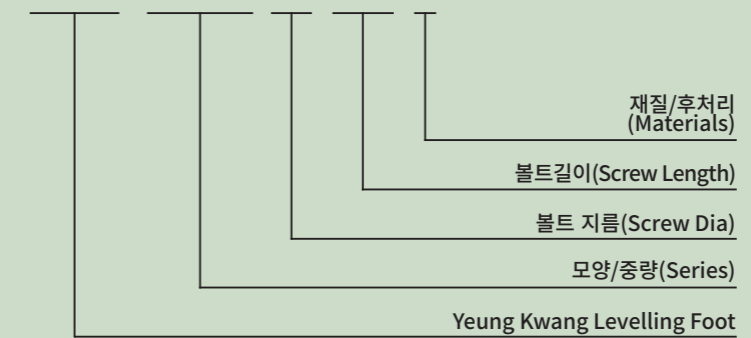
**Material** 볼트, 너트 - SS41, 하부컵-ALDC12

**Surface Processing** 볼트, 너트, 세트양카 : Zn, 하부컵-SHOT

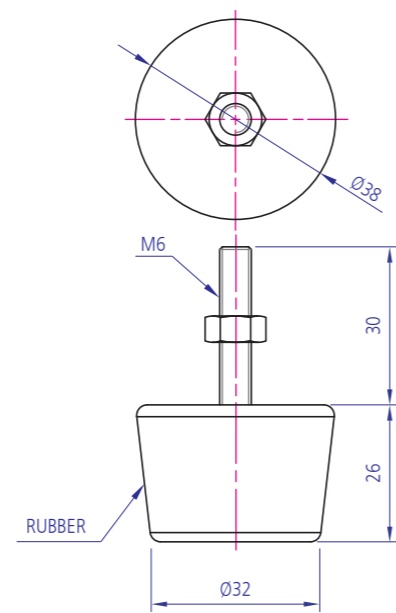
**Application** FRAME을 별도의 장치없이 바닥에 고정 시키기 위해 사용됨

Ordering Code

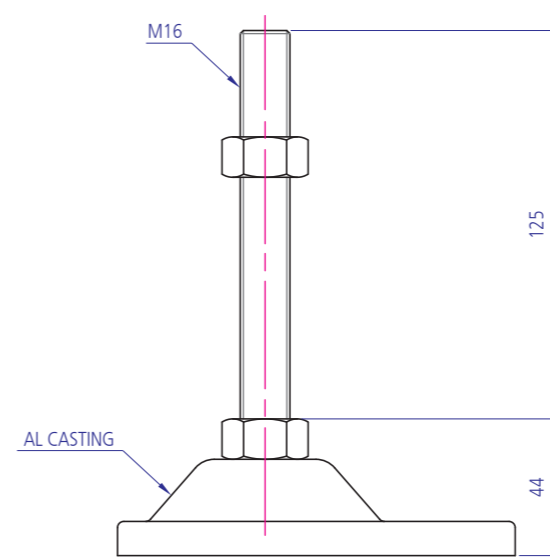
YKLF - A LAF 95 120 N



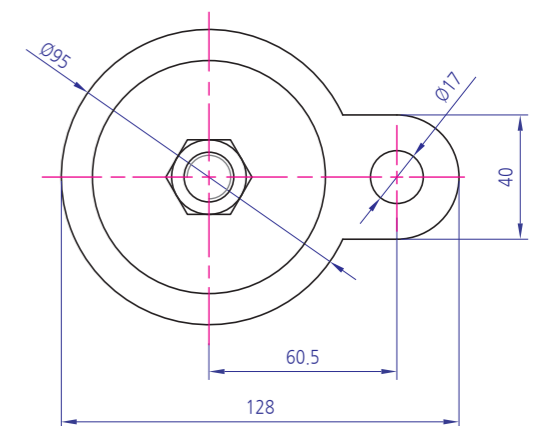
YKLF FA 838  
(회전형)  
Code : YKLF-FAA838



YKLF FA 630  
(고정형)  
Code : YKLF-FAF630



Code : YKLF-ALAF95120





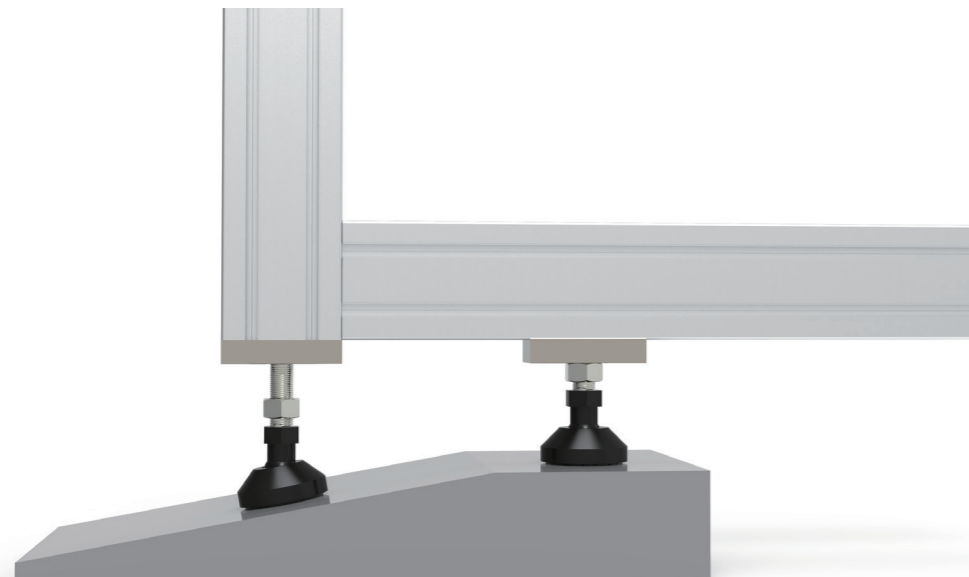
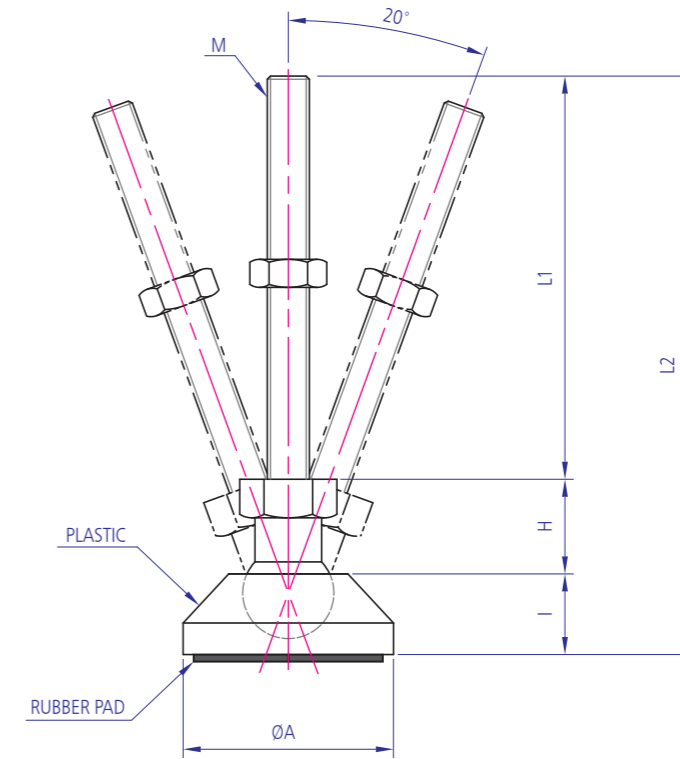
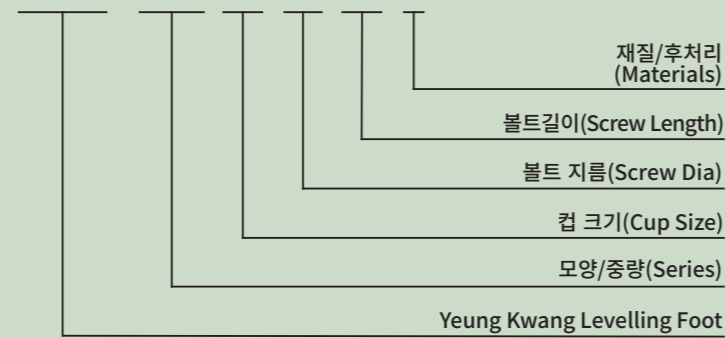
조절좌  
YKLF-LAR SERIES (경방진용)

Technical Data

**Material** 볼트, 너트 - SS41 / PAD - NBR  
**Surface Processing** ZN(백색), NI(니켈)  
**Application** 경량방진형으로 일부품목 각도조절이 가능함

Ordering Code

YKLF - LAR 60 12 70 N



규격	Code(모델)	Dimension (mm)							표면처리	허용하중 kg/4EA
		A	M	L1	L2	H	I	하부		
YKLF-LAR 12	60-12X70	60	M12X1.75	70	120	26	24	Plastic (사출)	일반 아연백색 니켈도금	400
	60-12X115			115	165					
YKLF-LAR 16	60-16X70	60	M16X2.0	70	120	26	30	Plastic (사출)	일반 아연백색 니켈도금	500
	60-16X115			115	165					
	90-16X70			70	120					
YKLF-LAR 20	90-16X115	90	M16X2.0	70	120	26	30	Plastic (사출)	일반 아연백색 니켈도금	600
	90-20X80			80	136					
	90-20X125			125	181					

※ 기타 특수사양은 특수제작함.



조절좌  
YKLF-M Series

Technical Data

**Material** S45C, SUS304

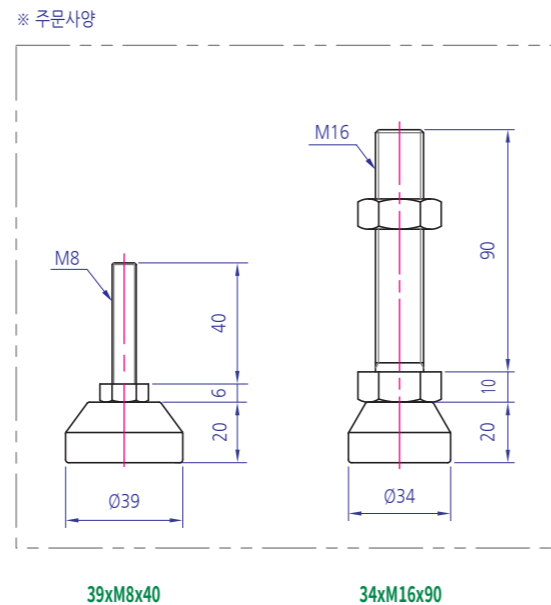
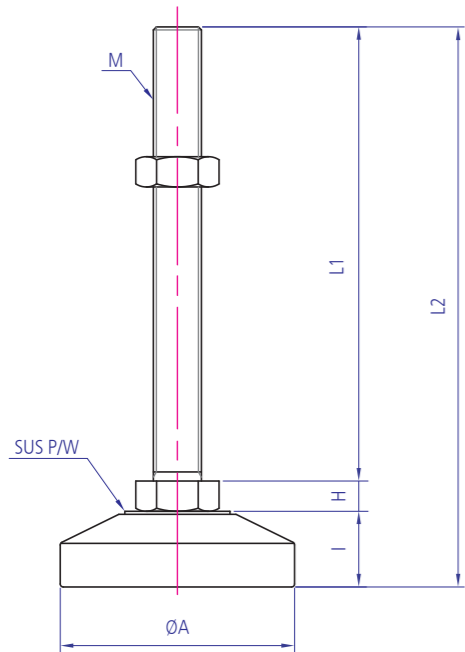
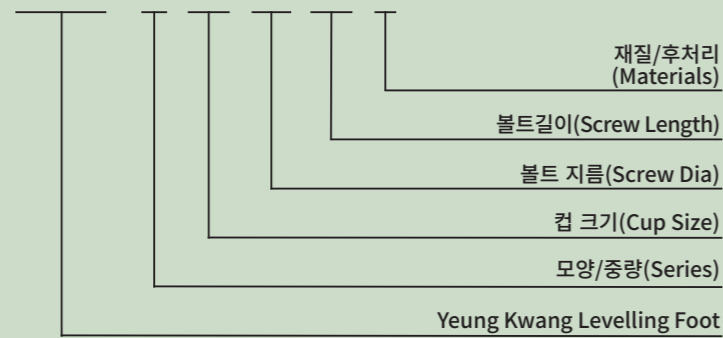
**Surface Processing** 무전해 니켈도금

**Application** 중·고하중용 조절좌로 하중이 많이 걸리는 장비에 적합

**참고** 1000kg/4EA ~ 6000kg/4EA

Ordering Code

YKLF - M 53 12 50 N



규격	Code(모델)	Dimension (mm)							표면처리	허용하중 kg/4EA				
		A	M	L1	L2	H	I	하부						
53	53-12X50	M12X1.75	53	M12X1.75	50	74	8	16	SM10C (SUS304)	니켈도금 (산처리)	1000			
	53-12X75				75	99								
	53-12X100				100	124								
	53-12X125				125	149								
	53-12X150				150	174								
	53-12X200				200	224								
	59-12X50				50	76						18		
	59-12X75				75	101								
	59-12X100				100	126								
	59-12X125				125	151								
59-12X150	150	176												
59-12X200	200	226												
64	64-16X50	M16X2.0	64	M16X2.0	50	78	10	18	SM10C (SUS304)	니켈도금 (산처리)	2000			
	64-16X75				75	103								
	64-16X100				100	128								
	64-16X130				130	158								
	64-16X150				150	178								
	64-16X180				180	208								
	64-16X200				200	228								
	64-16X250				250	278								
	78-16X50				50	82						22/24		
	78-16X75				75	107								
78-16X100	100	132												
78-16X130	130	162												
78-16X150	150	182												
78-16X180	180	212												
78-16X200	200	232												
78-16X250	250	282												
64	64-20X80	M20X2.5	64	M20X2.5	80	111	13	18/24	SM10C (SUS304)	니켈도금 (산처리)	3000			
	64-20X100				100	131								
	64-20X130				130	161								
	64-20X150				150	181								
	64-20X180				180	211								
	64-20X200				200	231								
	64-20X250				250	281								
	78-20X80				80	115						22		
	78-20X100				100	135								
	78-20X130				130	165								
78-20X150	150	185												
78-20X180	180	215												
78-20X200	200	235												
78-20X250	250	285												
78	78-24X100	M24X3.0	78	M24X3.0	100	138	16	22	SM10C (SUS304)	니켈도금 (산처리)	4000			
	78-24X150				150	188								
	78-24X200				200	238								
	78-24X250				250	288								
	98-24X100				100	143						27		
	98-24X150				150	193								
	98-24X200				200	243								
	98-24X250				250	293								
	98-30X150				150	196							19	26
	98-30X200				200	246								
98-30X250	250	296												
118-42X150	150	204	24	30										
118-42X200	200	254												
118-42X250	250	305												
150-42X150	150	203												
150-42X200	200	253												
150-42X250	250	303												



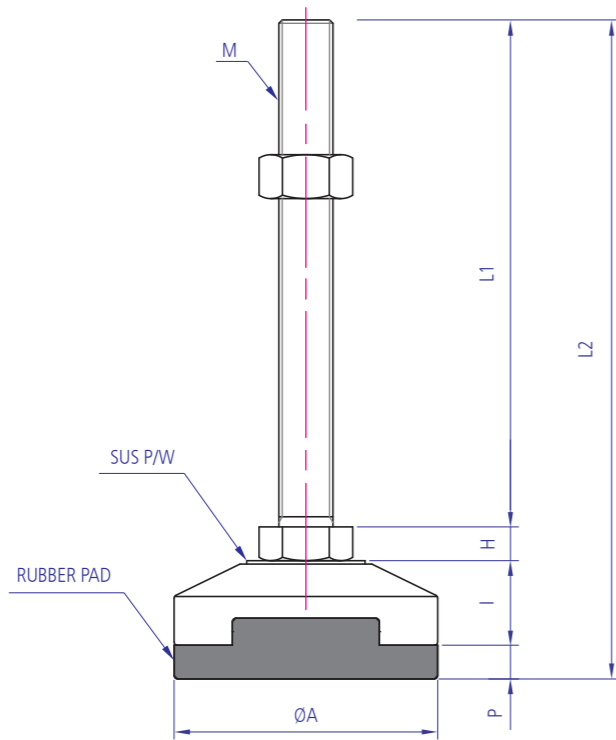
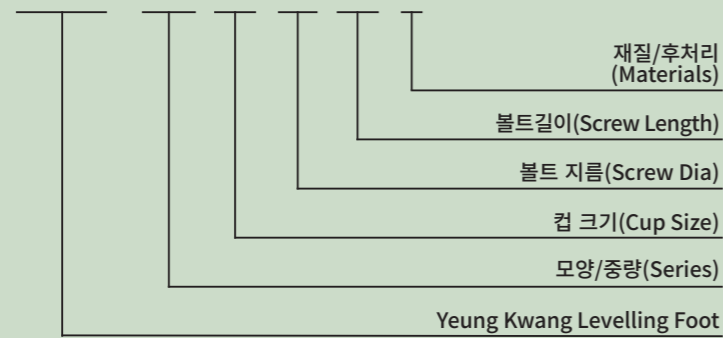
조절좌  
YKLF-MR SERIES (중하중-방진용)

Technical Data

**Material** 볼트,너트 - SS41, SUS, ZN 하부컵-S45C, PAD - NBR  
**Surface Processing** NI, ENI, AC(산처리)  
**Application** 중량 미끄럼방지 조절좌  
**참고** 공차가 있을 수 있습니다.

Ordering Code

YKLF - MR 53 12 50 N



규격	Code(모델)	Dimension (mm)							표면처리	허용하중 kg/4EA								
		A	M	L1	L2	H	I	T										
53-12X50	YKLF-MR531250	53	M12X1.75	50	80	8	16	6	니켈도금 산처리	1000								
	YKLF-MR531275			75	105													
	YKLF-MR5312100			100	130													
	YKLF-MR5312125			125	150													
	YKLF-MR5312150			150	180													
59-12X50	YKLF-MR591250	59	M12X1.75	50	82	8	18	6	니켈도금 산처리	2000								
	YKLF-MR591275			75	107													
	YKLF-MR5912100			100	132													
	YKLF-MR5912125			125	157													
	YKLF-MR5912150			150	182													
	YKLF-MR5912200			200	232													
	64-16X50			YKLF-MR641650	64						M16X2.0	50	84	10	18	6	니켈도금 산처리	3000
				YKLF-MR641675								75	109					
				YKLF-MR6416100								100	134					
				YKLF-MR6416130								130	164					
YKLF-MR6416150		150	184															
YKLF-MR6416180		180	214															
YKLF-MR6416200		200	234															
YKLF-MR6416250		250	284															
78-16X50		YKLF-MR781650	78	M16X2.0		50	92	13	22	10		니켈도금 산처리	4000					
		YKLF-MR781675				75	117											
	YKLF-MR7816100	100			142													
	YKLF-MR7816130	130			172													
	YKLF-MR7816150	150			192													
	YKLF-MR7816180	180			222													
	YKLF-MR7816200	200			242													
	YKLF-MR7816250	250			292													
	64-20X80	YKLF-MR642080			64	M20X2.5	80				117			13	18	6	니켈도금 산처리	5000
		YKLF-MR6420100					100				137							
YKLF-MR6420130		130	167															
YKLF-MR6420150		150	187															
YKLF-MR6420180		180	217															
YKLF-MR6420200		200	237															
YKLF-MR6420250		250	287															
78-20X80		YKLF-MR782080	78	M20X2.5			80	125	16	22	10	니켈도금 산처리	5000					
		YKLF-MR7820100					100	145										
		YKLF-MR7820130					130	175										
	YKLF-MR7820150	150			195													
	YKLF-MR7820180	180			225													
	YKLF-MR7820200	200			245													
	YKLF-MR7820250	250			295													
	78-24X100	YKLF-MR7824100			78	M24X3.0	100	148						16	22	10	니켈도금 산처리	5000
		YKLF-MR7824150					150	198										
		YKLF-MR7824200					200	248										
YKLF-MR7824250		250	298															
98-24X100		YKLF-MR9824100	98	M24X3.0			100	153	19	27	10	니켈도금 산처리	5000					
	YKLF-MR9824150	150			203													
	YKLF-MR9824200	200			253													
	YKLF-MR9824250	250			303													
	98-30X150	YKLF-MR9830150			98	M30X3.5	150	206						19	27	10	니켈도금 산처리	5000
YKLF-MR9830200		200	256															
YKLF-MR9830250		250	306															



조절좌  
YKLF-MA SERIES (중하중-회전)

Technical Data

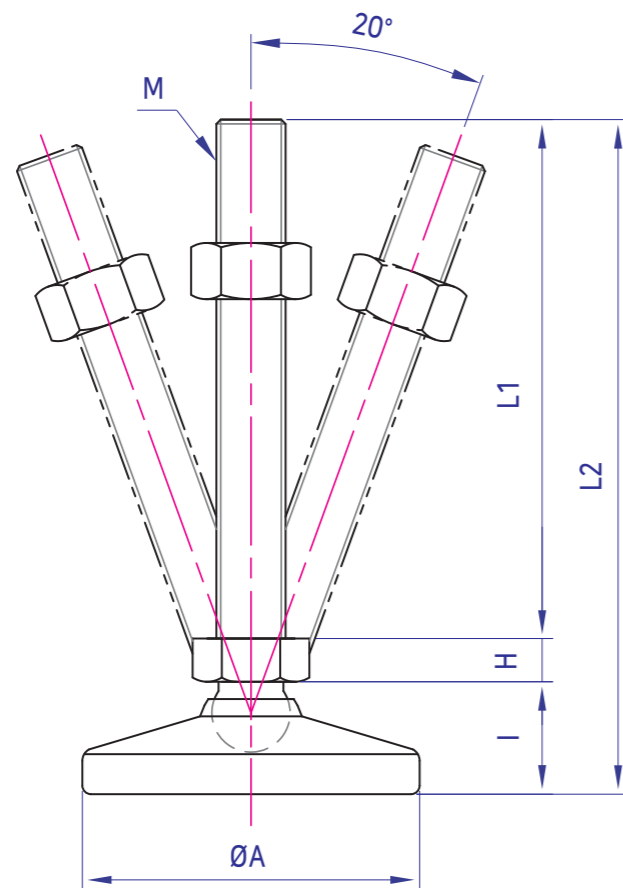
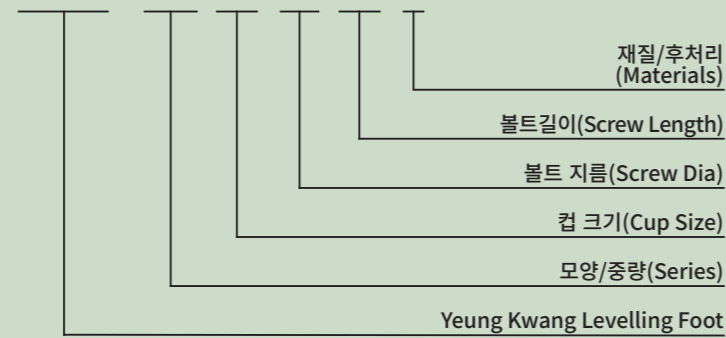
**Material** 볼트, 너트-SS41, SUS304(주문사양) / 하부컵-S45C, SUS303(주문사양)

**Surface Processing** NI, ENI, AC(산처리)

**Application** 중량형으로 각도조절이 가능함

Ordering Code

YKLF - MA 59 12 75 N



규격	모델(Code)	Dimension (mm)							표면처리	허용하중 kg/4EA	
		A	M	L1	L2	H	I	T			
YKLF-MA	59-12X75	59	M12X1.75	75	105	8	22	SM45C (SUS303)	니켈도금 산처리 (일반)	1000	
	59-12X100			100	130						
	59-12X125			125	155						
	59-12X150			150	180						
	59-12X200			200	230						
	59-16X50	59	M16X2.0	50	82	10	22			2000	
	59-16X75			75	107						
	59-16X100			100	132						
	59-16X130			130	162						
	59-16X150			150	182						
	59-16X180			180	212						
	59-16X200			200	232						
59-16X250	250	282	2000								
78-16X50	78	M16X2.0		50	86	10	26				
78-16X75				75	113						
78-16X100				100	136						
78-16X130				130	166						
78-16X150				150	186						
78-16X180				180	216						
78-16X200				200	236						
78-16X250				250	286						
78-20X100				78	M20X2.5			100	139	13	26
78-20X130								130	169		
78-20X150	150	189									
78-20X180	180	219									
78-20X200	200	239									
78-20X250	250	289									
98-24X100	98	M24X3.0	100			145	16	29			
98-24X150			150	195							
98-24X200			200	245							
98-24X250			250	295							
98-30X150			98	M30X3.5	150	198			19	29	
98-30X200	200	248									
98-30X250	250	298									
148-42X150	148	M42X4.5			150	222	30	42			
148-42X200			200	272							
148-42X250			250	322							



조절좌  
YKLF-MAR SERIES (중하중-회전)

Technical Data

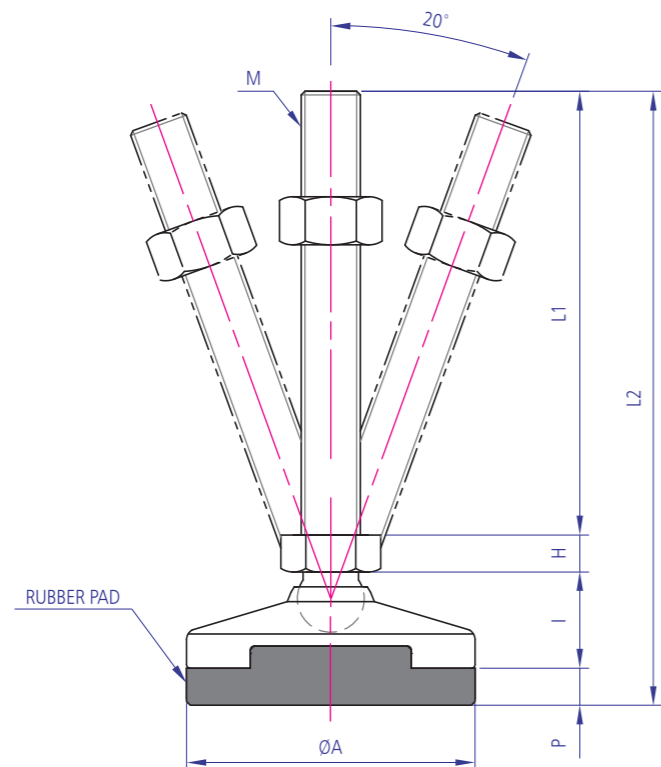
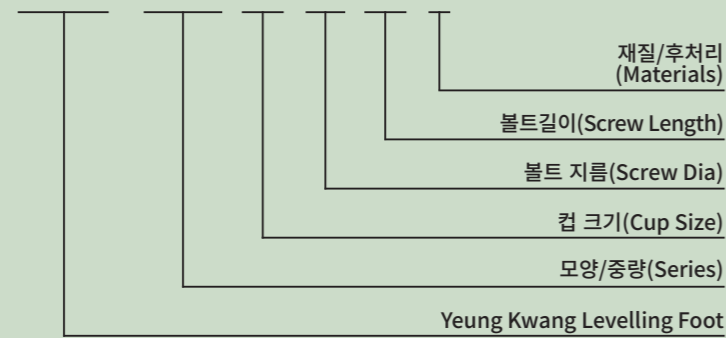
**Material** 볼트,너트 - SS41, SUS304(주문사양)  
하부컵-S45C, SUS303(주문사양) PAD -NBR

**Surface Processing** NI, SUS, ENI, AC(산처리)

**Application**

Ordering Code

YKLF - MAR 59 12 75 N



규격	Code(모델)	Dimension (mm)								표면처리	허용하중 kg/4EA							
		A	M	L1	L2	H	I	P	하부									
59-12X75	YKLF-MAR591275	59	M12X1.75	75	113	8	22	6		1000								
	59-12X100			100	138													
	59-12X125			125	163													
	59-12X150			150	188													
	59-12X200			200	238													
59-16X50	YKLF-MAR591650	59	M16X2.0	50	92	10	22	6		2000								
	59-16X75			75	117													
	59-16X100			100	142													
	59-16X130			130	172													
	59-16X150			150	192													
	59-16X180			180	222													
	59-16X200			200	242													
	59-16X250			250	292													
	78-16X50			YKLF-MAR781650	78						M16X2.0	50	96	10	26	10	SM45C (SUS304)	니켈도금 (일반) 산처리
				78-16X75								75	121					
78-16X100		100	146															
78-16X130		130	176															
78-16X150		150	196															
78-16X180		180	226															
78-16X200		200	246															
78-16X250		250	296															
78-20X100		100	149															
78-20X130		130	179															
78-20X150		150	199															
78-20X180		180	229															
78-20X200		200	249															
78-20X250		250	299															
98-24X100		YKLF-MAR9824100	98	M24X3.0		100	155	16	29				4000					
	98-24X150	150			205													
	98-24X200	200			255													
	98-24X250	250			305													
	98-30X150	150			208													
	98-30X200	200			258													
	98-30X250	250			308													



조절좌  
YKLF-MZ SERIES (중하중-아연컵)

Technical Data

**Material** STEEL(S45C), ZINC ALLOY, SUS, ZN

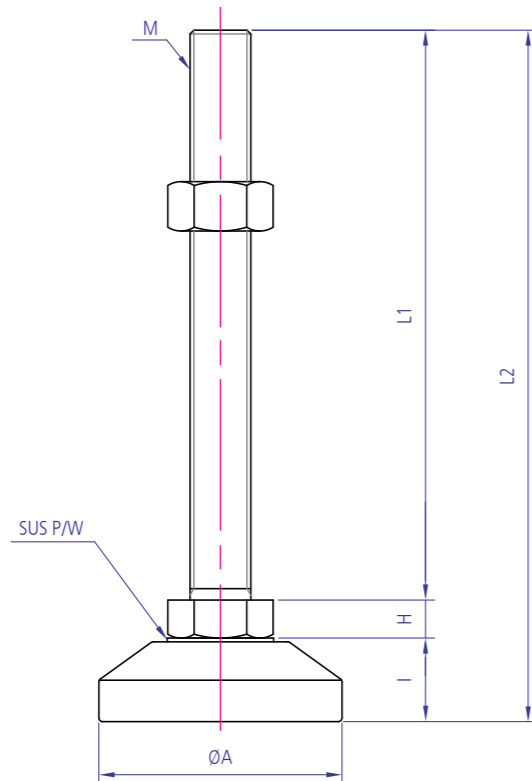
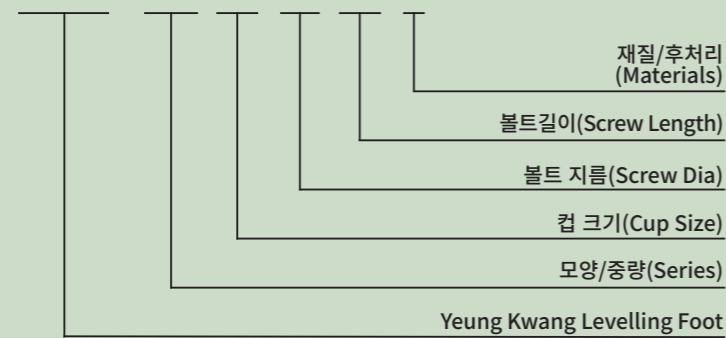
**Surface Processing** NI, SUS, AC(산처리)

**Application** 하부 컵은 아연재질이며 가공후 니켈도금한 제품으로 부식이 방지 되고 스테인레스와 동일한 특성을 가짐

**참고** 1000kg/4EA ~ 6000kg/4EA

Ordering Code

YKLF - MZ 53 12 50 N



규격	Code(모델)	Dimension (mm)						표면처리	허용하중 kg/4EA	
		A	M	L1	L2	H	I			
YKLF-MZ	53-12X50	53	M12X1.75	50	77	8	19	니켈도금 산처리	1000	
	53-12X75			75	102					
	53-12X100			100	127					
	53-12X125			125	152					
	53-12X150			150	177					
	64-12X50	64	M12X1.75	50	79	8	21			
	64-12X75			75	104					
	64-12X100			100	129					
	64-12X125			125	154					
	64-12X150			150	179					
	64-12X200	200	229							
	53-16X50	53	M16X2.0	50	79	10	19			
53-16X75	75			104						
53-16X100	100			129						
53-16X130	130			159						
53-16X150	150			179						
53-16X180	180			209						
53-16X200	200			229						
53-16X250	250			279						
64-16X50	64			M16X2.0	50			81	10	21
64-16X75					75			106		
64-16X100		100	131							
64-16X130		130	161							
64-16X150		150	181							
64-16X180		180	211							
64-16X200		200	231							
64-16X250		250	281							
78-16X50		78	M16X2.0		50	88	10	25		
78-16X75					75	113				
78-16X100	100			138						
78-16X130	130			168						
78-16X150	150			188						
78-16X180	180			218						
78-16X200	200			238						
78-16X250	250			288						
64-20X80	64			M20X2.5	80	114			10	21
64-20X100					100	134				
64-20X130		130	164							
64-20X150		150	184							
64-20X180		180	214							
64-20X200		200	234							
64-20X250	250	284								
78-20X80	78	M20X2.5	80	118	13	25				
78-20X100			100	138						
78-20X130			130	168						
78-20X150			150	188						
78-20X180			180	218						
78-20X200			200	238						
78-20X250			250	288						



조절좌  
YKLF-MZR SERIES (중량방진-아연컵)

Technical Data

**Material** STEEL(S45C), ZINC ALLOY, SUS, ZN

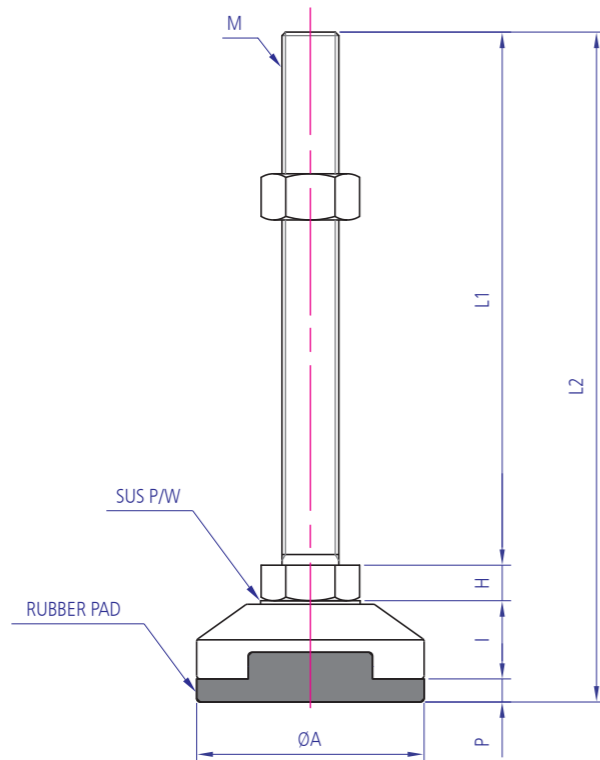
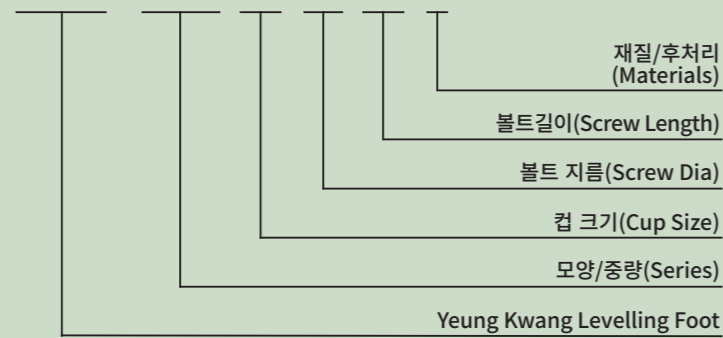
**Surface Processing** NI(니켈), BLACK(흑색)

**Application** 하부 컵은 아연재질이며 가공후 니켈도금한 제품으로 부식이 방지 되고 스테인레스와 동일한 특성을 지니며 가격이 저렴한 것이 장점. 미끄럼방지

**참고** 1000kg/4EA ~ 6000kg/4EA

Ordering Code

YKLF - MZR 53 12 50 N



규격	Code(모델)	Dimension (mm)							표면처리	허용하중 kg/4EA								
		A	M	L1	L2	H	I	P										
53-12X50	YKLF-MZR531250	53	M12X1.75	50	83	8	19	6	니켈도금 산처리	1000								
	YKLF-MZR531275			75	108													
	YKLF-MZR5312100			100	133													
	YKLF-MZR5312125			125	158													
	YKLF-MZR5312150			150	183													
	53-16X50	YKLF-MZR531650	53	M16X2.0	50	85	10	19			6	니켈도금 산처리	2000					
		YKLF-MZR531675			75	110												
		YKLF-MZR5316100			100	135												
		YKLF-MZR5316130			130	165												
		YKLF-MZR5316150			150	185												
YKLF-MZR5316180		180			215													
YKLF-MZR5316200		200			235													
YKLF-MZR5316250		250			285													
64-16X50		YKLF-MZR641650			64	M16X2.0			50	87				10	21	6	니켈도금 산처리	3000
		YKLF-MZR641675							75	112								
	YKLF-MZR6416100	100	137															
	YKLF-MZR6416130	130	167															
	YKLF-MZR6416150	150	187															
	YKLF-MZR6416180	180	217															
	YKLF-MZR6416200	200	237															
	YKLF-MZR6416250	250	287															
	78-16X50	YKLF-MZR781650	78	M16X2.0			50	98	13	25	10	니켈도금 산처리	3000					
		YKLF-MZR781675					75	123										
YKLF-MZR7816100		100			148													
YKLF-MZR7816130		130			178													
YKLF-MZR7816150		150			198													
YKLF-MZR7816180		180			228													
YKLF-MZR7816200		200			248													
YKLF-MZR7816250		250			298													
64-20X80		YKLF-MZR642080			64	M20X2.5	80	120						13	21	6	니켈도금 산처리	3000
		YKLF-MZR6420100					100	140										
	YKLF-MZR6420130	130	170															
	YKLF-MZR6420150	150	190															
	YKLF-MZR6420180	180	220															
	YKLF-MZR6420200	200	240															
	YKLF-MZR6420250	250	290															
	78-20X80	YKLF-MZR782080	78	M20X2.5			80	128	13	25	10	니켈도금 산처리	3000					
		YKLF-MZR7820100					100	148										
		YKLF-MZR7820130					130	178										
YKLF-MZR7820150		150			198													
YKLF-MZR7820180		180			228													
YKLF-MZR7820200		200			248													
YKLF-MZR7820250		250			298													





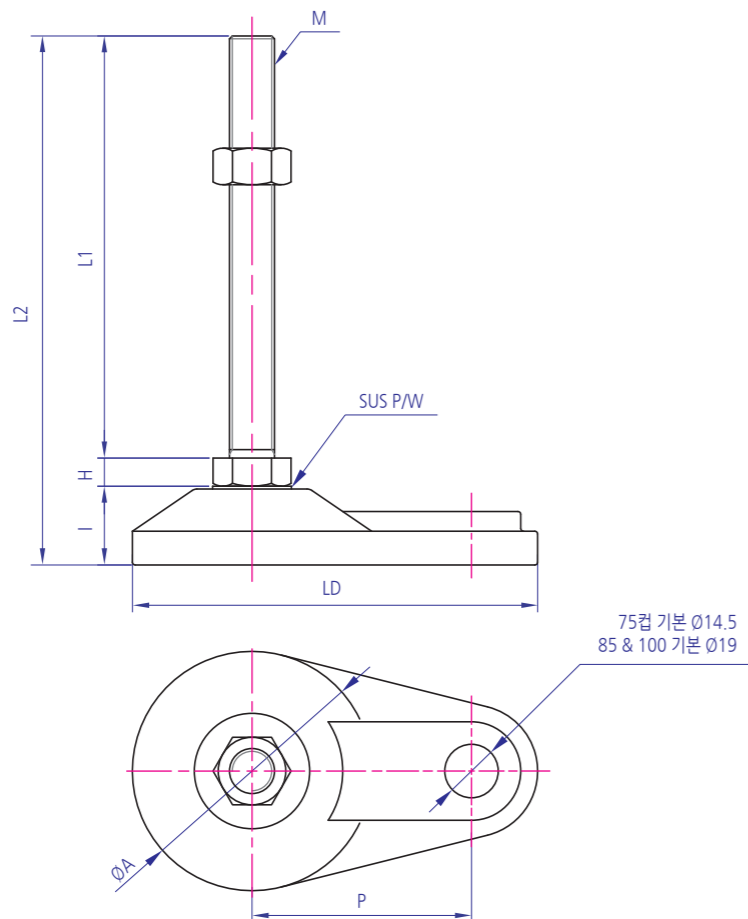
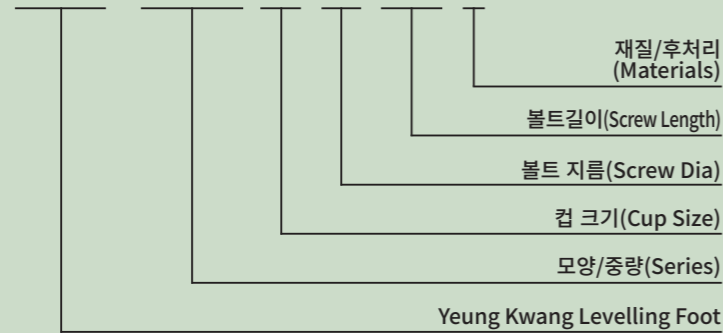
조절좌  
YKLF-PAD-A (하부패드형)

Technical Data

**Material** 볼트, 너트 - SM10C / 하부컵- FCD45  
**Surface Processing** 볼트, 너트 -Zn(백색) / 하부컵-Zn(백색), BK(흑색)  
**Application** 고하중용 장비 지지용. 바닥고정형 Frame을 별도의 장치없이 바닥에 고정시키기 위해 사용됨.

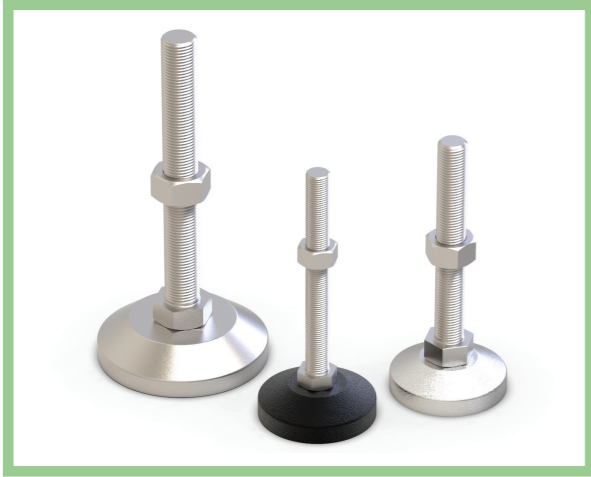
Ordering Code

YKLF - PAD A 75 16 100 N



규격	Code(모델)	Dimension (mm)										표면처리	허용하중 kg/4EA							
		A	M	L1	L2	H	I	L2	P	하부										
75	75-16X100	75	M16X2.0	100	133	10	24	110	66	단조	ZN(백색) Black Painting	2000								
	75-16X130			130	163															
	75-16X150			150	183															
	75-16X180			180	213															
	75-16X200			200	233															
	75-16X250		250	283																
	85		75-20X100	85	M20X2.5	100							136	13	28	141	78	단조	ZN(백색) Black Painting	3000
			75-20X130			130							166							
			75-20X150			150							186							
			75-20X180			180							216							
75-20X200		200	236																	
75-20X250		250	286																	
100		85-16X100	100		M16X2.0	100	137	10	32	159	90	단조	ZN(백색) Black Painting	2000						
		85-16X130				130	167													
		85-16X150				150	187													
		85-16X180				180	217													
	85-16X200	200		237																
	85-16X250	250		287																
	100	85-20X100		100	M20X2.5	100	140	13							32	159	90	단조	ZN(백색) Black Painting	3000
		85-20X130				130	170													
		85-20X150				150	190													
		85-20X180				180	220													
85-20X200		200	240																	
85-20X250		250	290																	
100		100-24X100	100		M24X3.0	100	148	16	32	159	90	단조	ZN(백색) Black Painting	4000						
		100-24X150				150	198													
		100-24X200				200	248													
		100-24X250			250	298														
	100-30X150	150		201	19															
	100-30X200	200		251																
100-30X250	250	301																		

※ 기타 특수사항은 특수제작함.

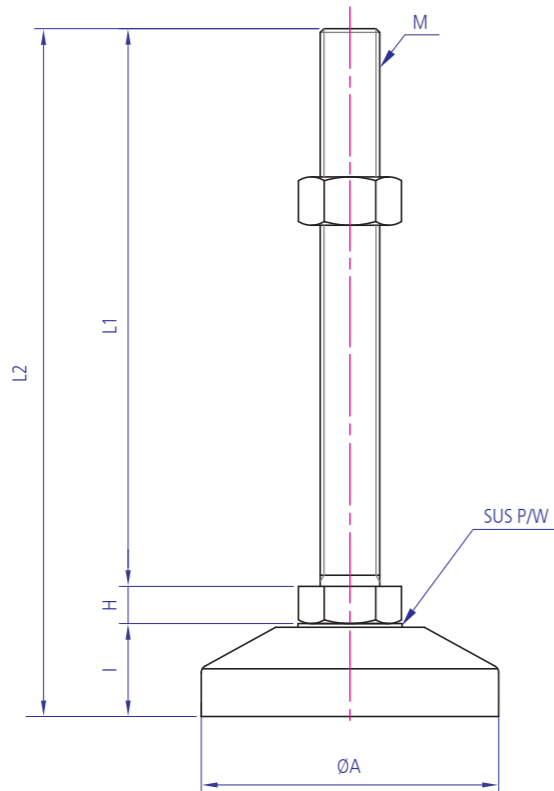
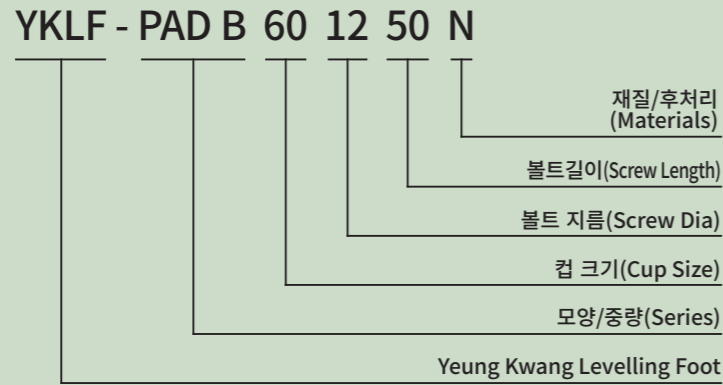


조절좌  
YKLF-PAD-B (하부패드형)

Technical Data

**Material** 볼트,너트- SM10C / 하부컵- FCD45  
**Surface Processing** 볼트,너트-ZN (백색) / 하부컵-ZN (백색), BK(흑색)  
**Application** 고하중용 장비 지지용

Ordering Code



규격	Code(모델)	Dimension (mm)							표면처리	허용하중 kg/4EA	
		A	M	L1	L2	H	I	하부			
60	60-12X50	60	M12X1.75	50	75	8	17	단조	ZN(백색) Black Painting	1000	
	60-12X75			75	100						
	60-12X100			100	125						
	60-12X125			125	150						
	60-12X150			150	175						
	60-12X200			200	225						
66	66-16X50	66	M16X2.0	50	79	10	19	단조	ZN(백색) Black Painting	2000	
	66-16X75			75	104						
	66-16X100			100	129						
	66-16X130			130	159						
	66-16X150			150	179						
	66-16X180			180	209						
	66-16X200			200	229						
	66-16X250			250	279						
	80-16X50			50	84						24
	80-16X75			75	109						
	80-16X100			100	134						
	80-16X130			130	164						
	80-16X150			150	184						
	80-16X180			180	214						
80-16X200	200	234									
80-16X250	250	284									
80-20X80	80	117	13								
80-20X100	100	137									
80-20X130	130	167									
80-20X150	150	187									
80-20X180	180	217									
80-20X200	200	237									
80-20X250	250	287									
100	100-24X100	100	M24X3.0	100	147	16	31	단조	ZN(백색) Black Painting	4000	
	100-24X150			150	197						
	100-24X200			200	247						
	100-24X250			250	297						
	100-30X150			150	200						19
	100-30X200			200	250						
100-30X250	250	300									
120	120-30X150	120	M30X3.5	150	204	19	35	단조	ZN(백색) Black Painting	5000	
	120-30X200			200	254						
	120-30X250			250	304						
	120-42X150			150	210						24
	120-42X200			200	260						
	120-42X250			250	310						

※ 기타 특수사양은 특수제작함.



조절좌  
YKLF-MB/MBS (고하중용)

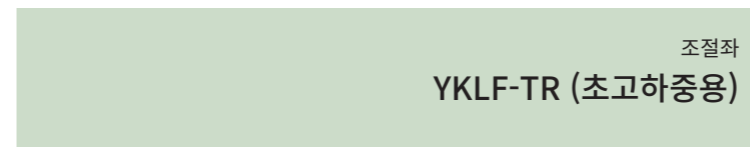
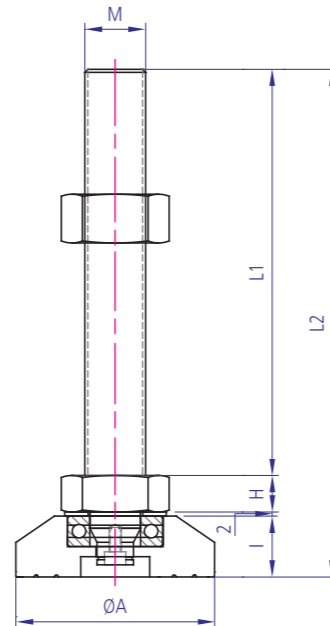
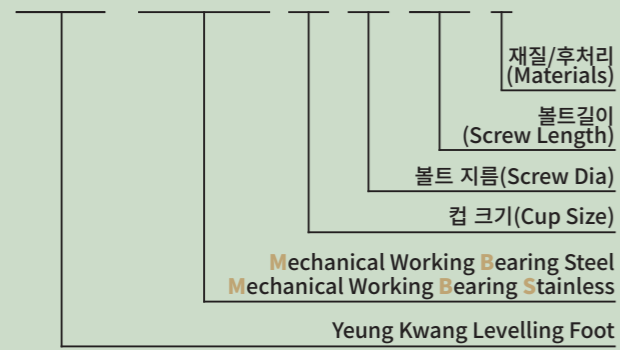
Technical Data

Material S45C, SUS304

Surface Processing NI, AC

Ordering Code

YKLF - MB/MBS 78 24 150 N



조절좌  
YKLF-TR (초고하중용)

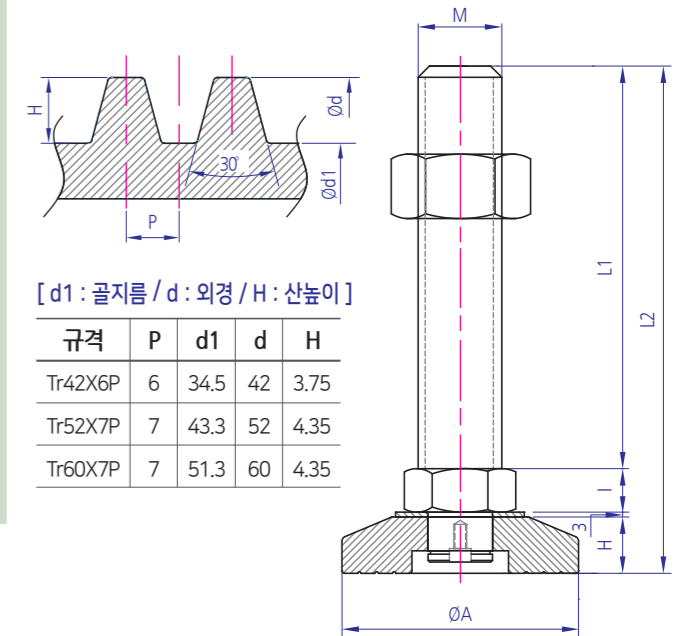
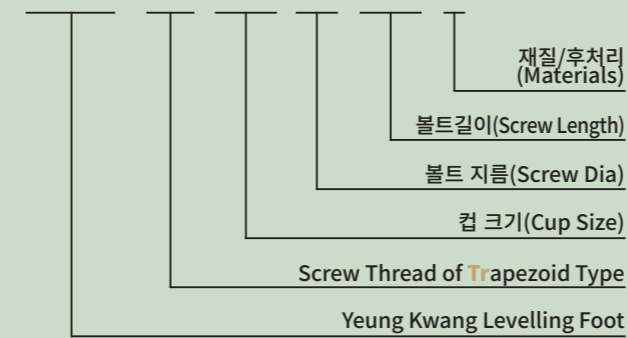
Technical Data

Material S45C, SUS304

Surface Processing 무전해 니켈도금

Ordering Code

YKLF - TR 127 42 150 N



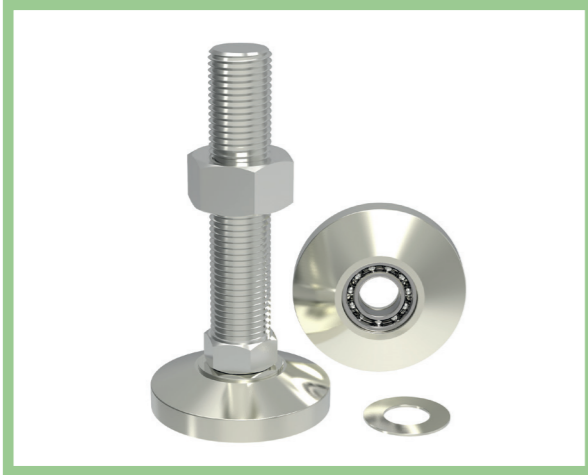
규격	Code(모델)	Dimension (mm)				재질/후처리			허용하중 kg/4EA															
		A	M	L1	L2	H	I	BOLT&NUT		CUP	후처리													
YKLF-MB/MBS	M24X3.0P	78-24X150	Ø78	M24X3.0P	150	196	14	30	S45C SUS304	S45C SUS304	NI(니켈) AC(산처리)	4000												
		78-24X200			200	246																		
		98-24X150	Ø98	M24X3.0P	150	196																		
		98-24X200			200	246																		
	M30X3.5P	98-30X150	Ø98	M30X3.5P	150	200	18						30	S45C SUS304	S45C SUS304	NI(니켈) AC(산처리)	5000							
		98-30X200			200	250																		
		M42X4.5P	127-42X150	Ø127	M42X4.5P	150												204	22	30	S45C SUS304	S45C SUS304	NI(니켈) AC(산처리)	6000
			127-42X200			200												254						
	127-42X250		250			304																		

주문예) @=모델선택(MB, MBS), #=재질/후처리(니켈-N, 산처리-A) / MB 니켈 예 : YKLF-MB7824150N

\* 기타 특수사양은 특수제작함.

규격	Code(모델)	Dimension (mm)				재질/후처리			허용하중 kg/4EA			
		A	M	L1	L2	H	I	BOLT&NUT		CUP	후처리	
YKLF-TR	Tr42X6P	Ø127	Tr42X6P	127-Tr42X150	150	204	22	30	S45C	S45C	무전해 니켈도금	12,000
				127-Tr42X200	200	254						
				127-Tr42X250	250	304						
				127-Tr42X300	300	354						
YKLF-TR	Tr52X7P	Ø147	Tr52X7P	147-Tr52X150	150	215	27	35	S45C	S45C	무전해 니켈도금	16,000
				147-Tr52X200	200	265						
				147-Tr52X250	250	315						
				147-Tr52X300	300	365						
YKLF-TR	Tr60X7P	Ø147	Tr60X7P	147-Tr60X150	150	215	27	35	S45C	S45C	무전해 니켈도금	20,000
				147-Tr60X200	200	265						
				147-Tr60X250	250	315						
				147-Tr60X300	300	365						

\* 기타 특수사양은 특수제작함.



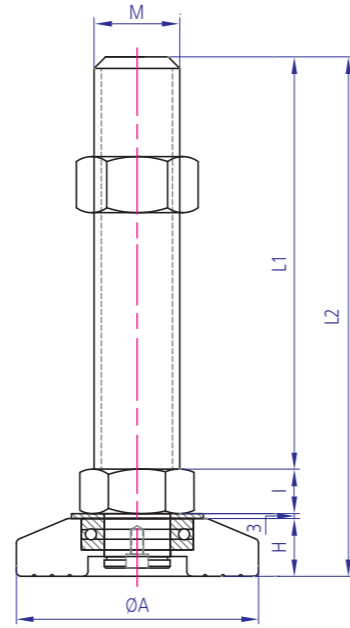
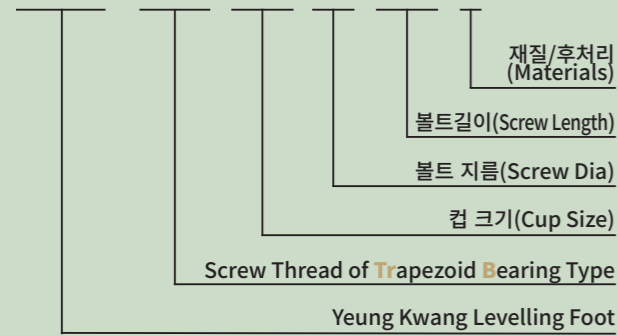
조절좌  
YKLF-TRB (초고하중용)

Technical Data

**Material** S45C  
**Surface Processing** 무전해 니켈도금

Ordering Code

YKLF - TRB 127 42 150 N



규격	Code(모델)	Dimension (mm)							재질/후처리			허용하중 kg/4EA
		A	M	L1	L2	H	I	BOLT&NUT	CUP	후처리		
YKLF-TRB	Trb42X6P	127-Trb42X150	Ø127	Trb42X6P	150	204	22	30	S45C	S45C	무전해 니켈도금	12,000
		127-Trb42X200			200	254						
		127-Trb42X250			250	304						
		127-Trb42X300			300	354						
	Trb52X7P	147-Trb52X150	Ø147	Trb52X7P	150	215	27	35				
		147-Trb52X200			200	265						
		147-Trb52X250			250	315						
		147-Trb52X300			300	365						
	Trb60X7P	147-Trb60X150	Ø147	Trb60X7P	150	215	27	35				
		147-Trb60X200			200	265						
		147-Trb60X250			250	315						
		147-Trb60X300			300	365						

※ 기타 특수사양은 특수제작함.

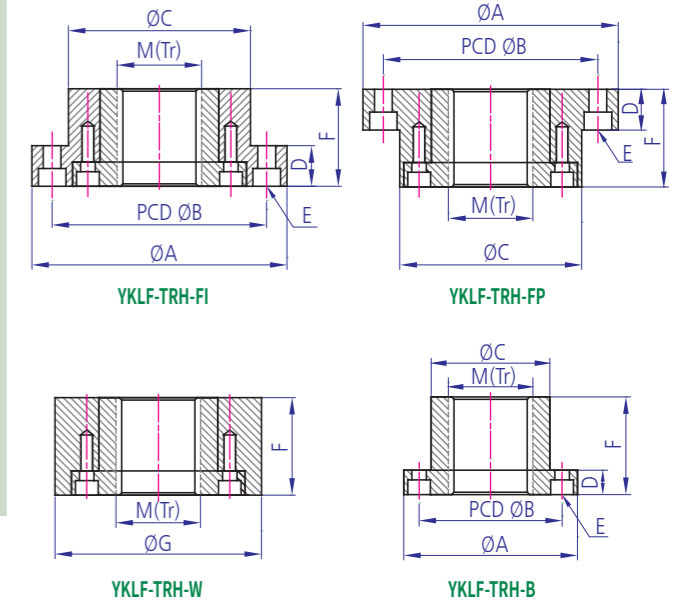
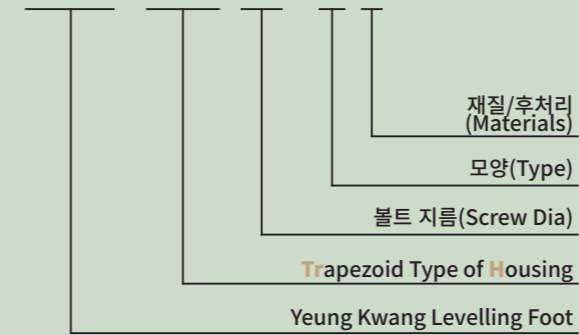
조절좌  
YKLF-TRH (초고하중용)

Technical Data

**Material** S45C/SUS  
**Surface Processing** Zn, Ni, E-Ni

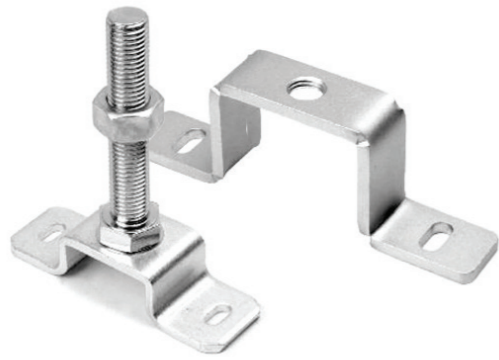
Ordering Code

YKLF - TRH 42 - FI N



규격	Code(모델)	Dimension (mm)									재질/후처리						
		A	B(PCD)	M(Tr)	C	D	E	F	G	Housing	Busing	후처리					
YKLF-TRH (Housing + Bushing Set)	TRH42-FI	Tr42X6P	YKLF-TRH42-FI	Ø147	Ø122	Tr42X6P	Ø102	25	4-M10	50	-	S45C/SUS	BS	Zn(아연) Ni(니켈) E-Ni (무전해)			
	TRH52-FI	Tr52X7P	YKLF-TRH52-FI	Ø157	Ø132	Tr52X7P	Ø112		4-M10	60	-						
	TRH60-FI	Tr60X7P	YKLF-TRH60-FI	Ø167	Ø142	Tr60X7P	Ø122		6-M10	70	-						
	TRH42-FP	Tr42X6P	YKLF-TRH42-FP	Ø147	Ø122	Tr42X6P	Ø102		4-M10	50	-						
	TRH52-FP	Tr52X7P	YKLF-TRH52-FP	Ø157	Ø132	Tr52X7P	Ø112	4-M10	60	-							
	TRH60-FP	Tr60X7P	YKLF-TRH60-FP	Ø167	Ø142	Tr60X7P	Ø122	6-M10	70	-							
	TRH42-W	Tr42X6P	YKLF-TRH42-W	-	-	Tr42X6P	-	-	50	Ø117							
	TRH52-W	Tr52X7P	YKLF-TRH52-W	-	-	Tr52X7P	-	-	60	Ø127							
	TRH60-W	Tr60X7P	YKLF-TRH60-W	-	-	Tr60X7P	-	-	70	Ø137							
	YKLF-TRH (Bushing)	TRH42-B	Tr42X6P	YKLF-TRH42-B	Ø97	Ø78	Tr42X6P	Ø63	15	4-M8	50				-	-	-
		TRH52-B	Tr52X7P	YKLF-TRH52-B	Ø107	Ø88	Tr52X7P	Ø73		4-M8	60				-	-	-
		TRH60-B	Tr60X7P	YKLF-TRH60-B	Ø117	Ø98	Tr60X7P	Ø83		6-M8	70				-	-	-

※ 기타 특수사양은 특수제작함.

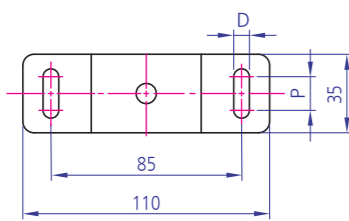
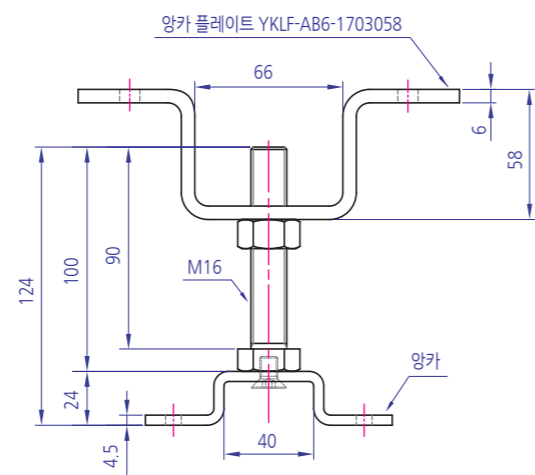
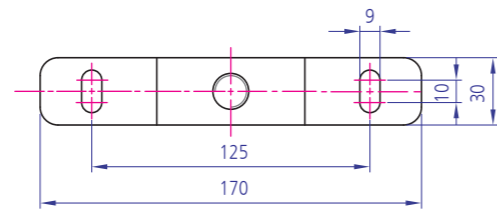
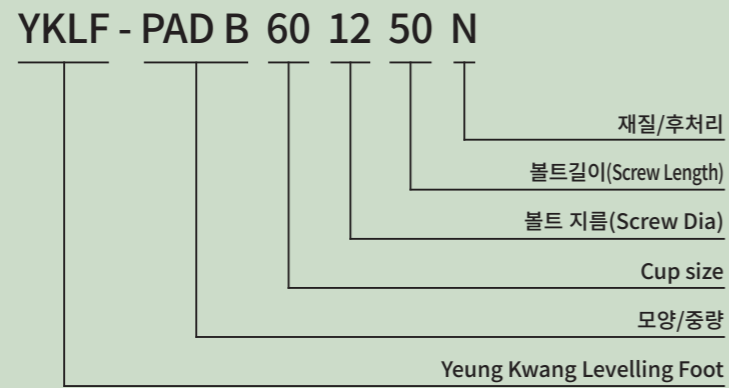


조절좌  
YKLF-APT (PT양카)

Technical Data

**Material** SS41  
**Surface Processing** NI, ZN, ENI  
**Application** FRAME을 별도의 장치없이 바닥에 고정 시키기 위해 사용됨, 파티션 고정용

Ordering Code



규격	모델(Code)	P	D
YKLF-APT 35Qx16x90 (15 SLOT)	YKLF-APT351690	15	7
YKLF-APT 35Qx16x90 (10 SLOT)	YKLF-APT351690T	10	6.5

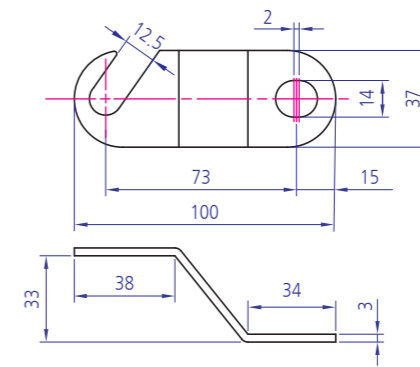
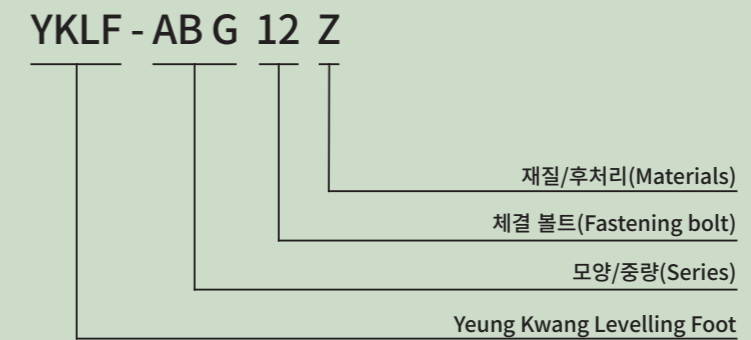
※플레이트는 별도 구매

조절좌  
YKLF-AB G SERIES (양카브라켓-중량형)

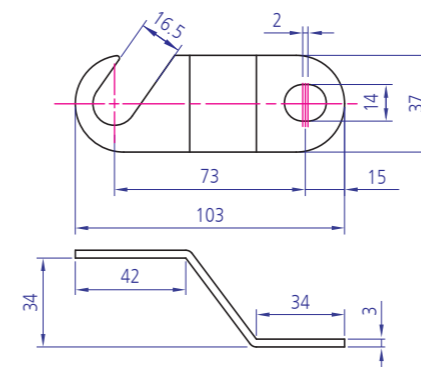
Technical Data

**Material** SS41  
**Surface Processing** NI, ZN, ENI  
**Application** 조절좌에 부착시켜 바닥면에 고정시킴

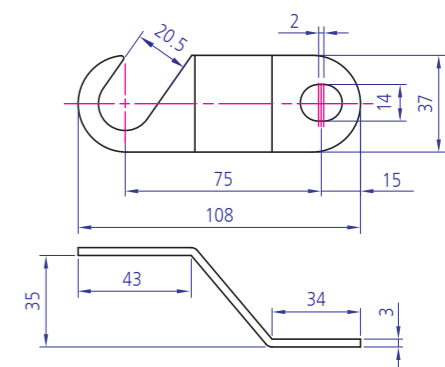
Ordering Code



YKLF-AB G12  
Code : YKLF-ABG12



YKLF-AB G16  
Code : YKLF-ABG16



YKLF-AB G20  
Code : YKLF-ABG20

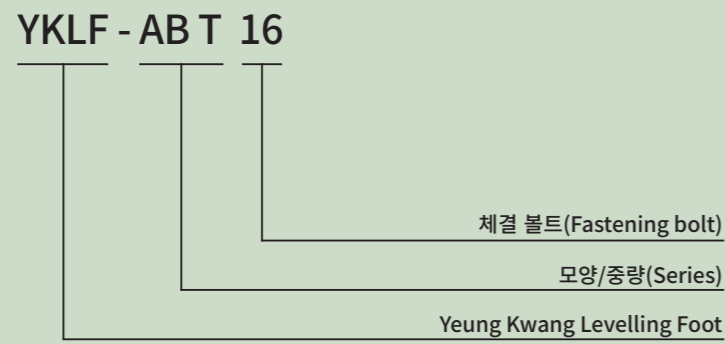


LEVELLING FOOT  
YKLF-AB T SERIES (앙카브라켓-중량형)

Technical Data

**Material** SS41  
**Surface Processing** NI(니켈)  
**Application** 조절좌에 부착시켜 바닥면에 고정시킴  
**참고** 주문 제작 가능

Ordering Code

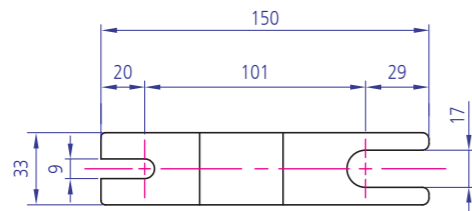
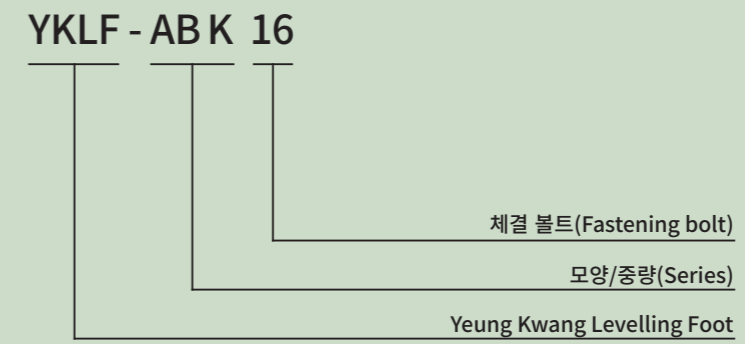


LEVELLING FOOT  
YKLF-AB K SERIES (앙카브라켓-중량형)

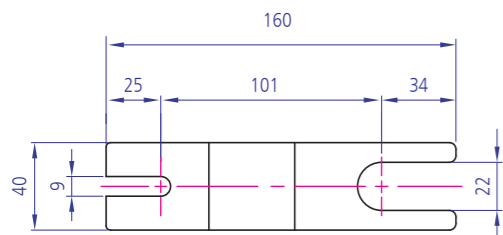
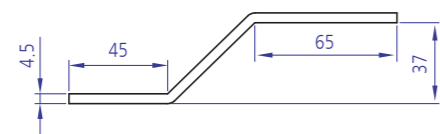
Technical Data

**Material** SS41  
**Surface Processing** NI, ZN, ENI  
**Application** 조절좌에 부착시켜 바닥면에 고정시킴

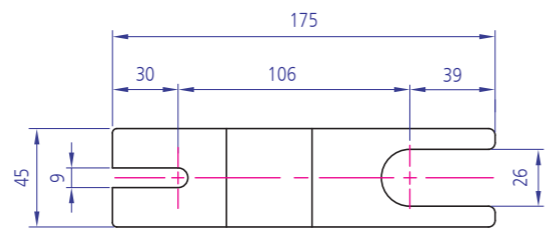
Ordering Code



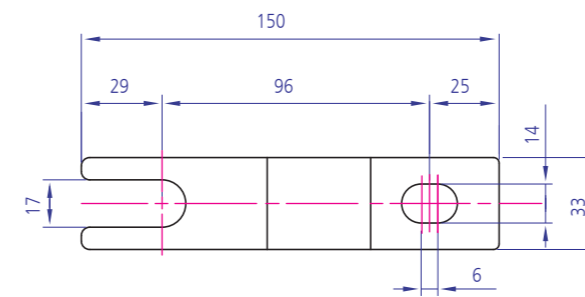
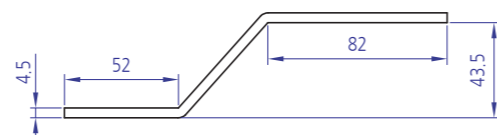
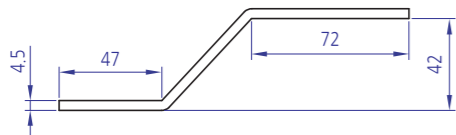
YKLF-AB T16 (NI)  
Code : YKLF-ABT16



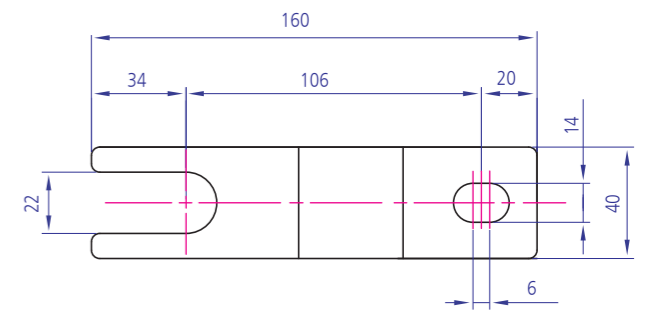
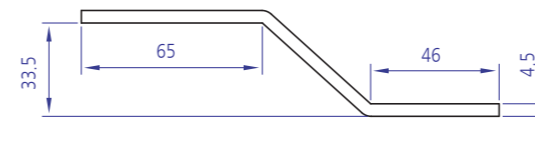
YKLF-AB T20 (NI)  
Code : YKLF-ABT20



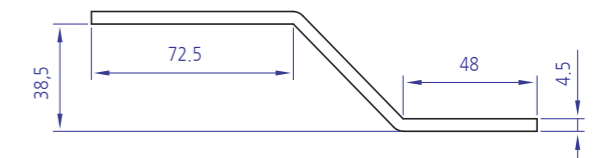
YKLF-AB T24 (NI)  
Code : YKLF-ABT24



YKLF-AB K16  
Code : YKLF-ABK16



YKLF-AB K20  
Code : YKLF-ABK20





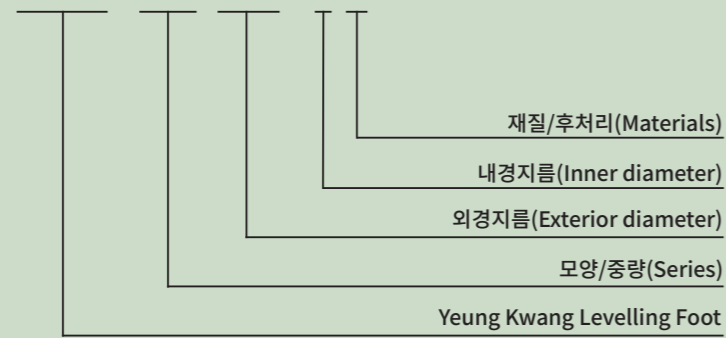
조절좌  
YKLF-WS (하중분산판)

Technical Data

**Material** SS41  
**Surface Processing** ZN, NI  
**Application** 하중분산 받침대, 기타 내경SIZE 주문가능  
**참고** 주문 제작 가능

Ordering Code

YKLF - WS 100 - 1 N



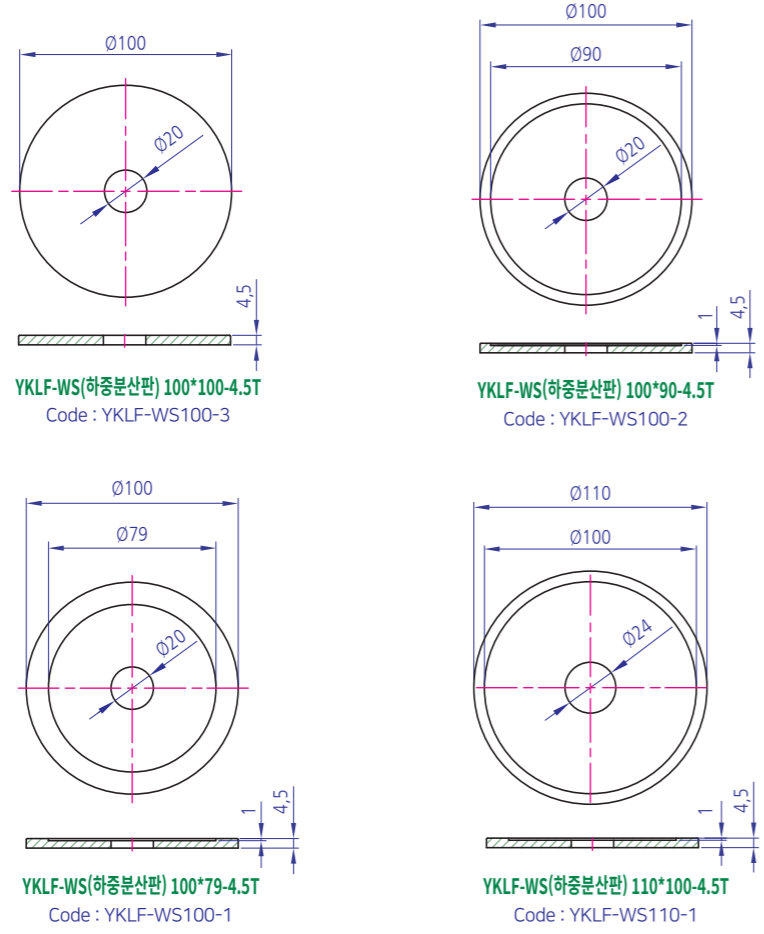
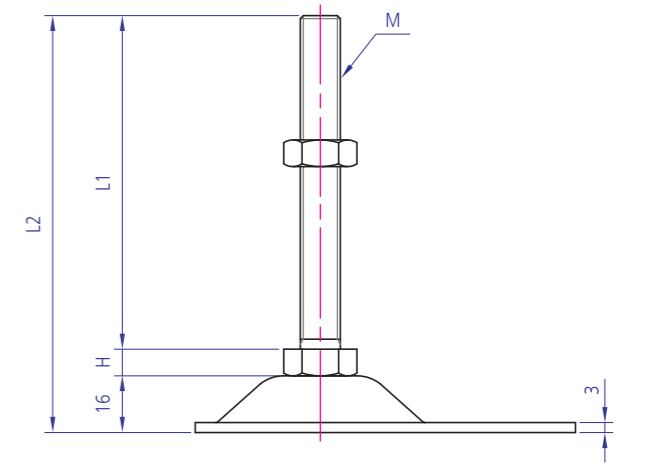
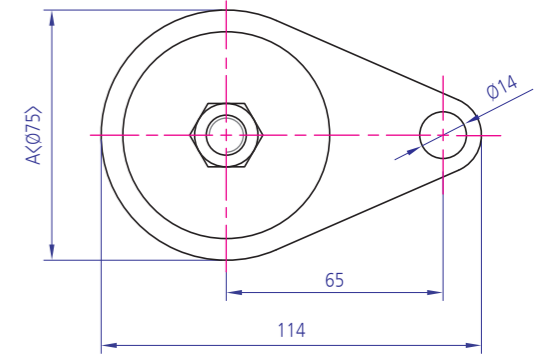
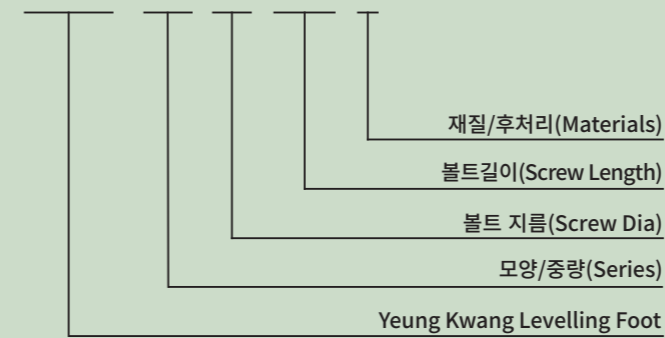
조절좌  
YKLF-A A-TYPE (양카형)

Technical Data

**Material** 니켈도금  
**Surface Processing** SUS  
**Application** 각종 산업기기, 환경실험장치 등에 사용

Ordering Code

YKLF - AA 12 100 N



규격	Code(모델)	Dimension (mm)					표면처리	허용하중 kg/4EA
		A	M	L1	L2	H		
YKLF-A (A타입)	75-12X100	75	M12X1.75	100	124	8	SUS	500
	75-12X125			125	154			
	75-12X150			150	174			
	75-16X90			90	116			
	75-16X100		M16X2.0	100	126	10		800
	75-16X130			130	156			
	75-16X150			150	176			
	75-16X180			180	206			
75-16X200	200	226						

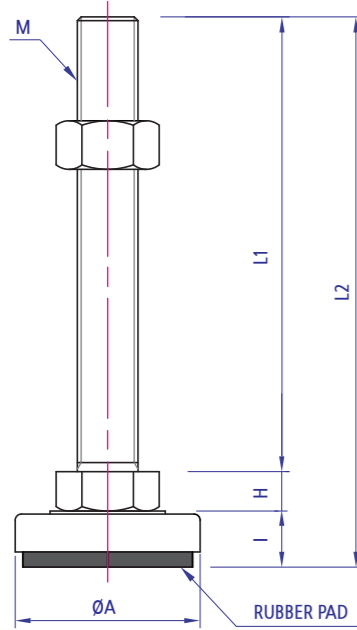
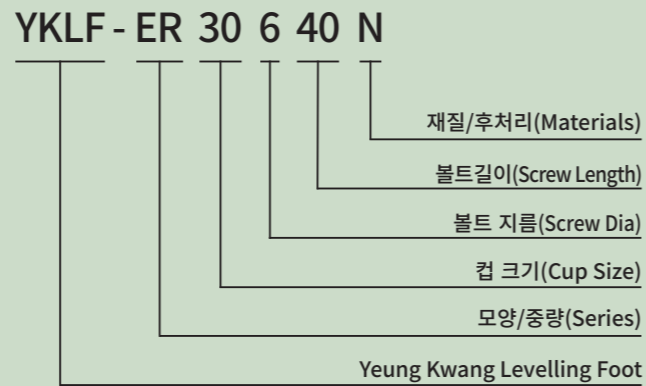


조절좌  
YKLF-ER (커버-방진)

Technical Data

**Material** 니켈도금  
**Surface Processing** SUS  
**Application** 각종 산업기기, 환경시험장치 등에 사용

Ordering Code



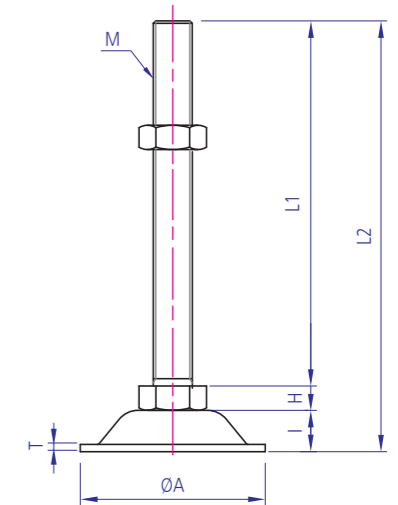
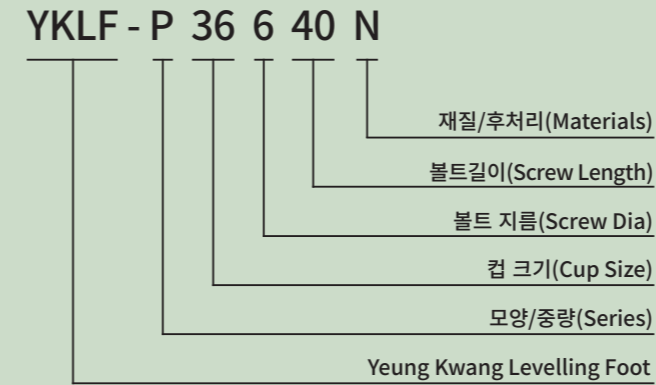
규격	Code(모델)	Dimension (mm)							표면처리	허용하중 kg/4EA					
		A	M	L1	L2	H	I	하부							
YKLF-ER 6	40-6X40	YKLF-ER40640	40	M6X1.0	40	63	6	17	1.5T	SUS	100				
YKLF-ER 8	40-8X40	YKLF-ER40840		M8X1.25	40	63					200				
YKLF-ER10	40-8X80	YKLF-ER40880	40	M8X1.25	80	103	6	17	1.5T	SUS	300				
	YKLF-ER10	48-10X60			YKLF-ER481060	60					84.5	7	17.5	2T	500
YKLF-ER12	48-10X100	YKLF-ER4810100	48	M12X1.75	100	124.5	8	17.5	2T	SUS	300				
	YKLF-ER12	48-12X50			YKLF-ER481250	50					75.5	76	17	3T	800
	YKLF-ER12	48-12X75			YKLF-ER481275	75					100.5				
	YKLF-ER12	48-12X100			YKLF-ER4812100	100					125.5				
	YKLF-ER12	48-12X125			YKLF-ER4812125	125					150.5				
	YKLF-ER12	48-12X150			YKLF-ER4812150	150					175.5				
YKLF-ER12	48-12X200	YKLF-ER4812200	200	225.5											

조절좌  
YKLF-P (경량-프레스)

Technical Data

**Material** 니켈도금  
**Surface Processing** SUS  
**Application** 각종 산업기기, 환경시험장치 등에 사용

Ordering Code



규격	Code(모델명)	Dimension (mm)							표면처리	허용하중 kg/4EA									
		A	M	L1	L2	H	I	T											
YKLF-P 12	50-12X50	YKLF-P501250	50	M12X1.75	50	73	8	15	2.6T (2.5T-SUS)	SUS	500								
	50-12 X75	YKLF-P501275			75	98													
	50-12X100	YKLF-P5012100			100	123													
	50-12X125	YKLF-P5012125			125	148													
	50-12X150	YKLF-P5012150			150	173													
YKLF-P 12	63-12X50	YKLF-P631250	63	M12X1.75	50	73	8	15	3T	SUS	600								
	63-12X75	YKLF-P631275			75	98													
	63-12X100	YKLF-P6312100			100	123													
	63-12X125	YKLF-P6312125			125	148													
	63-12X150	YKLF-P6312150			150	173													
	63-12X200	YKLF-P6312200			200	223													
YKLF-P 16	63-16X50	YKLF-P631650	63	M16X2.0	50	75	10	17	3T	SUS	700								
	63-16X75	YKLF-P631675			75	100													
	63-16X100	YKLF-P6316100			100	125													
	63-16X130	YKLF-P6316130			130	155													
	63-16X150	YKLF-P6316150			150	175													
	63-16X180	YKLF-P6316180			180	205													
	63-16X200	YKLF-P6316200			200	225													
	YKLF-P 16	76-16X50			YKLF-P761650	76						M16X2.0	50	77	10	17	3T	SUS	800
	YKLF-P 16	76-16X75			YKLF-P761675								75	102					
	YKLF-P 16	76-16X100			YKLF-P7616100								100	127					
	YKLF-P 16	76-16X130			YKLF-P7616130								130	157					
	YKLF-P 16	76-16X150			YKLF-P7616150								150	177					
	YKLF-P 16	76-16X180			YKLF-P7616180								180	207					
YKLF-P 16	76-16X200	YKLF-P7616200	200	227															
YKLF-P 16	76-16X250	YKLF-P7616250	250	277															
YKLF-P 16	76-16X300	YKLF-P7616300	300	327															





조절좌  
YKLF-M Series

Technical Data

**Material** S45C, SUS304

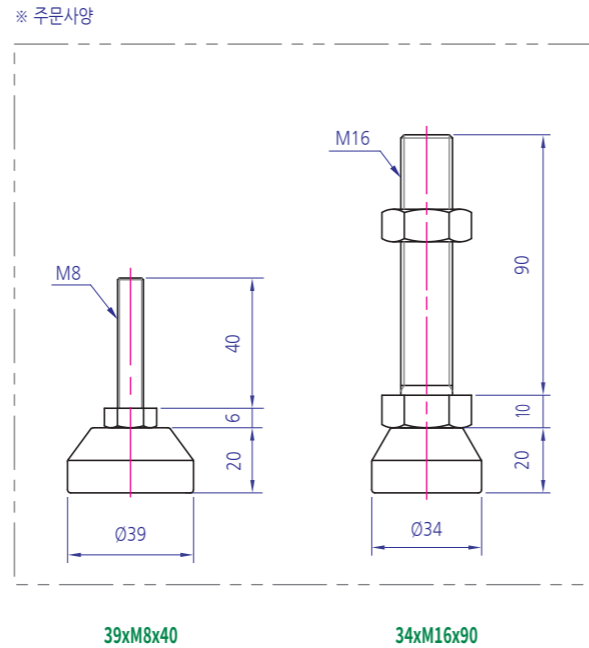
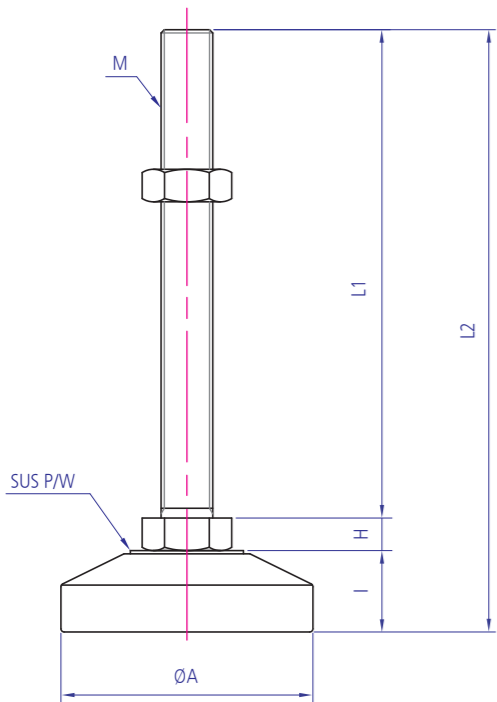
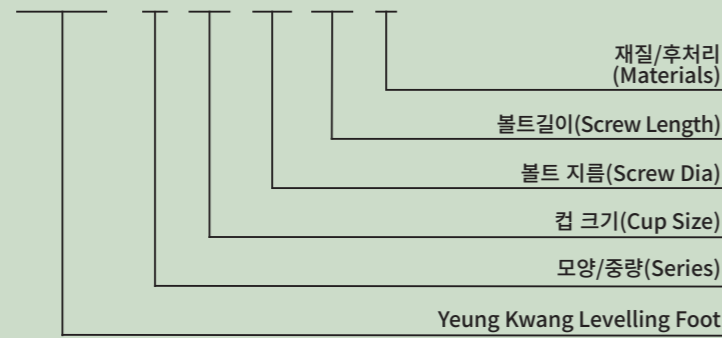
**Surface Processing** 무전해 니켈도금

**Application** 중·고하중용 조절좌로 하중이 많이 걸리는 장비에 적합

**참고** 1000kg/4EA ~ 6000kg/4EA

Ordering Code

YKLF - M 53 12 50 N



규격	Code(모델)	Dimension (mm)							표면처리	허용하중 kg/4EA
		A	M	L1	L2	H	I	하부		
YKLF-M	53-12X50	53	M12X1.75	50	74	8	16	SM10C (SUS304)	무전해 니켈도금	1000
	53-12X75			75	99					
	53-12X100			100	124					
	53-12X125			125	149					
	53-12X150			150	174					
	53-12X200			200	224					
	59-12X50	59	M12X1.75	50	76	18				
	59-12X75			75	101					
	59-12X100			100	126					
	59-12X125			125	151					
	59-12X150			150	176					
	59-12X200			200	226					
	64-16X50	64	M16X2.0	50	78	10	18			
	64-16X75			75	103					
	64-16X100			100	128					
	64-16X130			130	158					
	64-16X150			150	178					
	64-16X180			180	208					
	64-16X200			200	228					
	64-16X250			250	278					
78-16X50	78			M16X2.0	50			82	22/24	
78-16X75					75			107		
78-16X100		100	132							
78-16X130		130	162							
78-16X150		150	182							
78-16X180		180	212							
78-16X200		200	232							
78-16X250		250	282							
64-20X80		64	M20X2.5		80	111	13	18/24		
64-20X100					100	131				
64-20X130	130			161						
64-20X150	150			181						
64-20X180	180			211						
64-20X200	200			231						
64-20X250	250			281						
78-20X80	78			M20X2.5	80	115			22	
78-20X100					100	135				
78-20X130					130	165				
78-20X150		150	185							
78-20X180		180	215							
78-20X200		200	235							
78-20X250		250	285							
78-24X100		78	M24X3.0		100	138	16	22		
78-24X150					150	188				
78-24X200					200	238				
78-24X250	250			288						
98-24X100	98			M24X3.0	100	143			27	
98-24X150					150	193				
98-24X200		200	243							
98-24X250		250	293							
98-30X150		98	M30X3.5		150	196	19	27		
98-30X200					200	246				
98-30X250	250			296						
118-42X150	118			M42X4.5	150	204			24	27
118-42X200		200	254							
118-42X250		250	305							
150-42X150		150	M42X4.5		150	203	24	29		
150-42X200	200			253						
150-42X250	250			303						

Roller  
Bearing Holder  
Motor Base  
Bracket  
Multi Block  
Joint  
Hinge  
Magnet  
Handle  
Foot Base  
방진구  
Levelling Foot  
Cover  
End Cap  
Bolt  
Nut  
Washer  
Special  
Profile  
Caster



조절좌

YKLF-WS (하중분산판)

### Technical Data

**Material** SS41

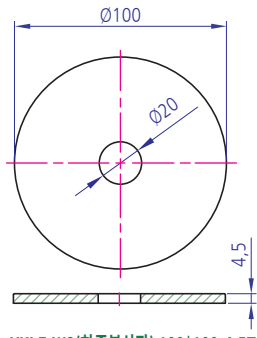
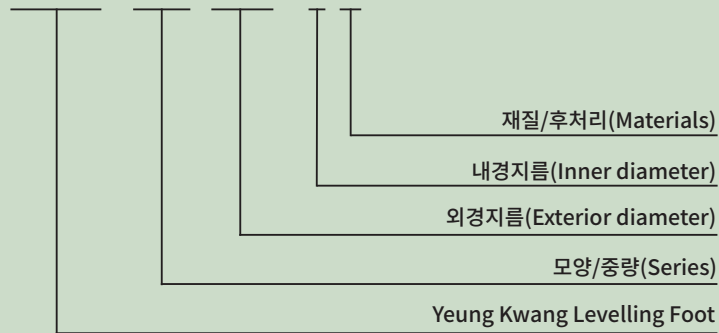
**Surface Processing** 무전해 니켈도금 or SUS

**Application** 하중분산 받침대, 기타 내경SIZE 주문가능

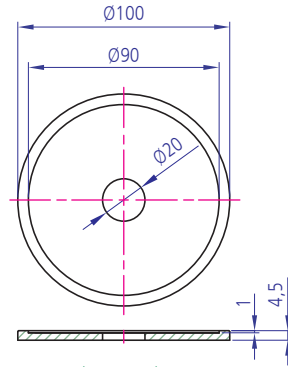
**참고** 주문 제작 가능

### Ordering Code

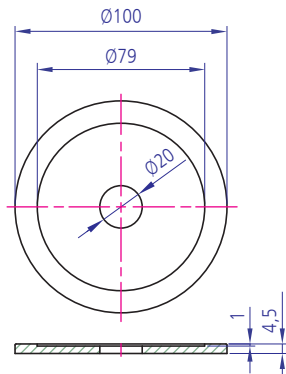
YKLF - WS 100 - 1 N



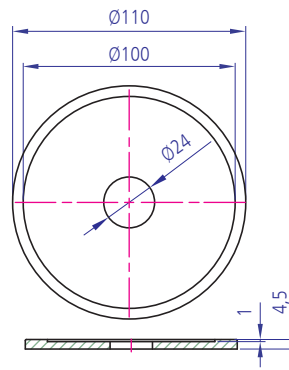
YKLF-WS(하중분산판) 100\*100-4.5T  
Code : YKLF-WS100-3



YKLF-WS(하중분산판) 100\*90-4.5T  
Code : YKLF-WS100-2



YKLF-WS(하중분산판) 100\*79-4.5T  
Code : YKLF-WS100-1



YKLF-WS(하중분산판) 110\*100-4.5T  
Code : YKLF-WS110-1