

BOLT.NUT.WASHER

등근머리렌지



표준형

특주품

T볼트



표준형

남선형

볼트
page 412 ~ 419



EV형

경남형

신성형

셈스볼트



셈스렌지

셈스등근렌지

셈스십자



육각렌지볼트

접시렌지볼트

접시 핀 렌지볼트

무두렌지볼트

트러스십자볼트

육각볼트



아이볼트

노브볼트

사각볼트

근각볼트



턴버클

플렌지너트

스프링

표준형

중심형

스편지



표준형



평형

인서트

표준형

평형

남선형

T너트

표준형

너트
page 420 ~ 432



스틸

볼너트

볼너트

직사각너트

표준형

P형

육각너트

정사각너트



캡너트

플림 방지 너트

Z너트

롱너트

탭플레이트

IG SERIES

IF SERIES

SQ SERIES



EV SERIES

24-25x9T SERIES

KEY NUT SERIES

EVC-18x9T SERIES

EV, EVA SERIES

장너트

와셔
page 433 ~ 436



평와셔

KS 표준형

특주형

직사각형

스프링와셔

표준형

육각렌지볼트용



플림방지용와셔

네꼬와셔

MD5-1

MD5-2

MD10-1

2차 전지용
page 437 ~ 438



T볼트 표준형

플렌지너트

스프링 너트 표준형

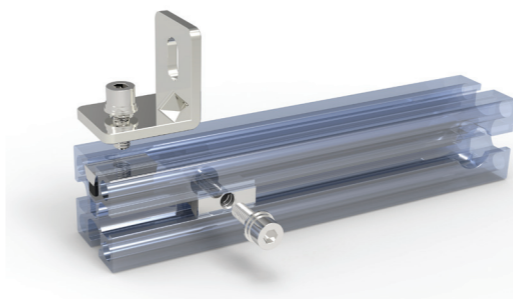
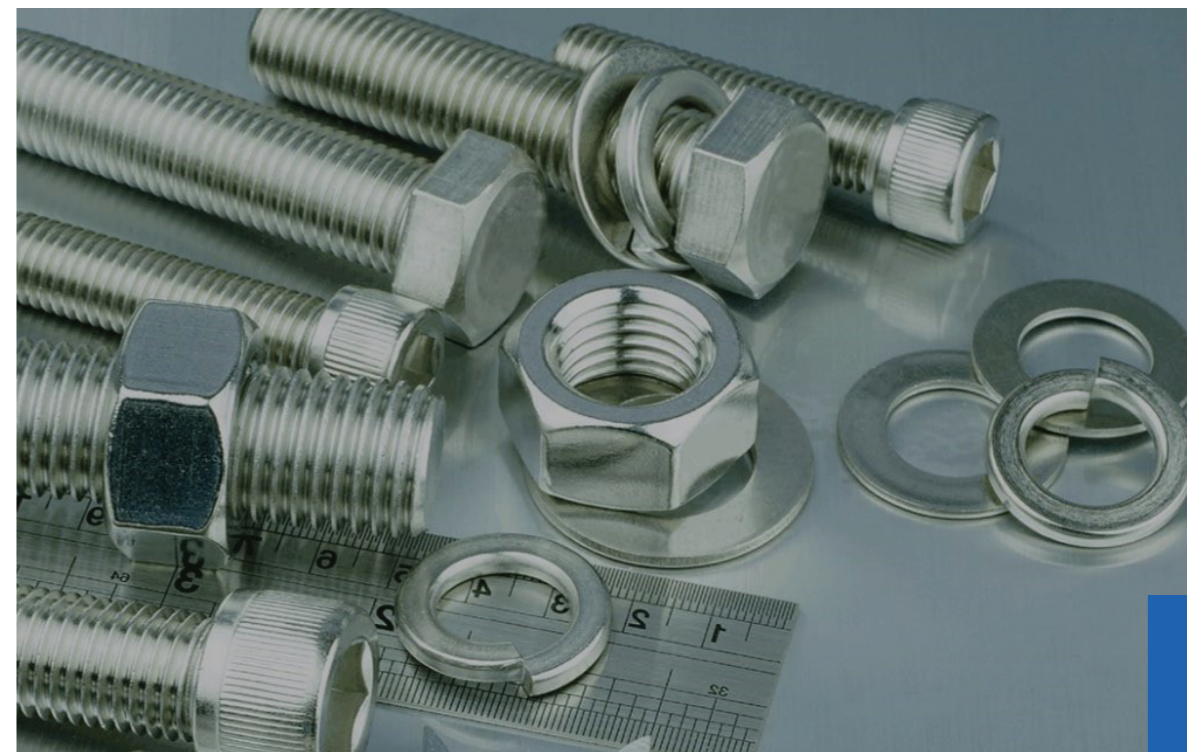
YKB / YKN / YKW



Bolt_Nut_Washer



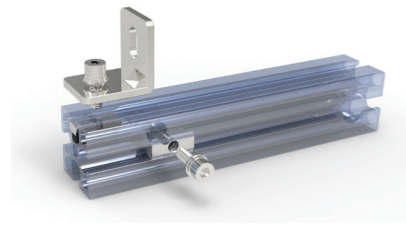
프로파일 조립 시 가장 많이 사용되는 볼트와 너트 와셔는 인장 하중 시험을 거쳐 생산하고 있으며 일반적인 볼트 외에 다양한 종류의 볼트를 제공합니다. 조립 시 볼트가 너무 튀어 나오는 걸 방지하는 볼트와 너트의 삽입이 없어도 조립 가능한 볼트, 무전해 니켈 도금부터 폴리싱, sus볼트까지 다양한 볼트가 있습니다. 너트는 일반적인 너트부터 T볼트 체결용 너트, 볼트에 너트를 연결 후 프로파일 홈에 삽입하여 체결하는 방식, 너트를 프로파일 T홈에 삽입하여 체결하는 방식 등 다양한 사이즈와 종류들을 제공하여 드릴 수 있습니다. 와셔는 풀림방지용, 접시 렌지볼트 삽입용, 와셔 조인트클립형까지 다양한 사이즈와 종류들을 제공하여 드릴 수 있습니다.



프로파일 조립 시 가장 많이 사용되는 볼트와 너트 와셔는 인장 하중 시험을 거쳐 공개하고 있으며 일반적인 볼트 외에 다양한 종류의 볼트를 제공할 수 있습니다.



영광테크는 프로파일용 다양한 연결 부품 및 액세서리의 생산 및 유통을 전문으로 합니다. 이러한 연결 부품 및 액세서리는 고객이 특정 요구 사항에 맞는 맞춤형 솔루션을 만들 수 있도록 설계 및 엔지니어링 서비스를 제공할 수 있습니다.



볼트는 기계를 제작하거나 설계할 때 체결방법을 결정하는 중요한 기계요소입니다. 상황에 맞게 체결하고자 하는 특정 부품에 맞는 크기와 유형, 재질을 적재적소에 사용해야 합니다. 모터 감속기를 호이스트를 이용해 들어올릴 때는 아이볼트를 사용해야 하며, 면의 표면이 걸리는 것이 없게 체결하려면 육각렌지볼트를 사용해야 합니다. 이처럼 형태 뿐만 아니라 강, 황동, 합금 등 재질도 설계 제작에 맞게 고려해서 선택해야 합니다.

Bolt Ordering Code

EXAMPLE
YKB - SWC 3 10 E

EXAMPLE = 영광테크 스텐렌지볼트 지름3 볼트길이10 후처리 니켈

재질/후처리(Materials)
 볼트 길이(Screw Length)
 볼트 지름(Screw Dia)
 Series
 Yeung Kwang Bolt

2d, 3d 및 상세한 내용은 홈페이지(www.yktec.co.kr) 참조



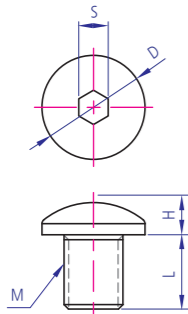
동근머리렌지볼트
YKB-WD

Technical Data

Material - SCM435
Surface processing - N(니켈), E(무전해), B(흑착), S(SUS)
Application - 프로파일 조립 및 브라켓 조립시 사용



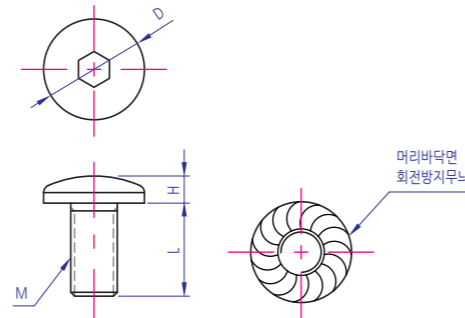
	Code	L	D	H	S
M3	YKB-WB3	6~25	5.5	1.7	2
M4	YKB-WB4	6~40	7.5	2.2	2.5
M5	YKB-WB5	6~40	9.5	2.8	3
M5(小)	YKB-WB5	8~12	7	2.8	4
M5(大)	YKB-WB5	8~12	9.5	2.8	4
M6	YKB-WB6	8~50	10.5	3.3	4
M8	YKB-WB8	10~70	14	4.4	5
M10	YKB-WB10	12~25	18	5.5	6
M12	YKB-WB12	15~70	21	6.6	6



동근머리렌지볼트
YKB-WD SL(특주품)

Technical Data

Material - SCM435
Surface processing - N(니켈), E(무전해)
Application - 프로파일 조립 및 브라켓 조립시 사용

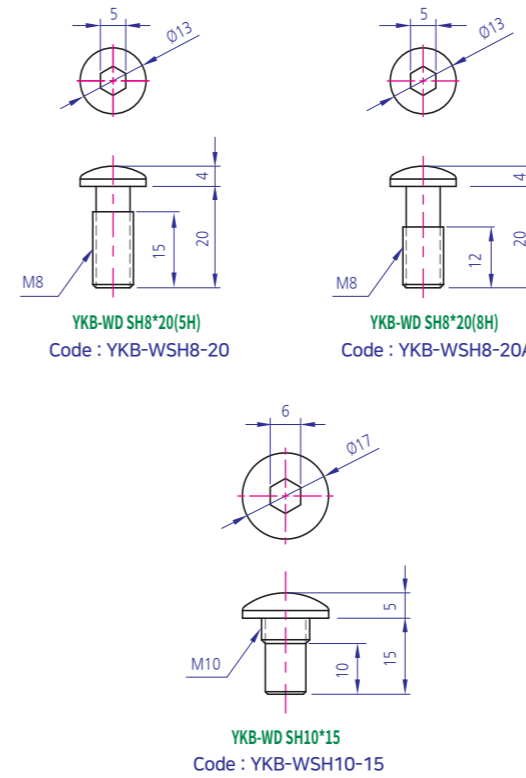


제품명	Code	M	L	H	D
YKB-WD SL5*10(Q11)	YKB-WSL5-10	5	10	3.5	11
YKB-WD SL6*10(Q13)	YKB-WSL6-10	6	10	3.5	13
YKB-WD SL6*12(Q13)	YKB-WSL6-12	6	12	3.5	13

동근머리렌지볼트
YKB-WD SH SERIES (특주품)

Technical Data

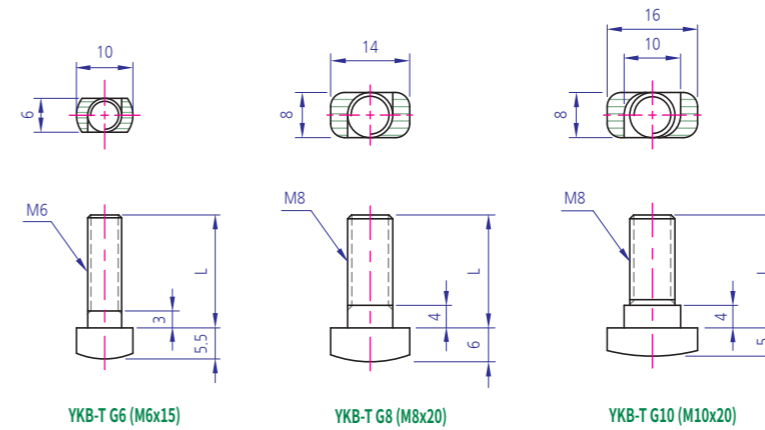
Material - SCM435
Surface processing - N(니켈)
Application - 프로파일 조립 및 브라켓 조립시 사용



T-BOLT(표준형)
YKB-T G SERIES

Technical Data

Material - SWCH10A, SUS304
Surface processing - N(니켈), E(무전해), B(흑착), S(SUS)
Application - 너트삽입의 번거로움없이 편리하게 조립가능
참고 - 기본품의 "L"값은 주문생산 가능



YKB-TG-6 Series

YKB-TG-8 Series

M	Code	L	H	h	B	W	Material	Plating
6	YKB-TG6	13,15,20,25,30,40,45,50,55	5.5	3	6	10	SWCH10A (SUS)	Ni
8	YKB-TG8	15,16,18,20,25,28,30,35,36,40,45,50,55,60,65,68,70,75,95	6	4	8	14		

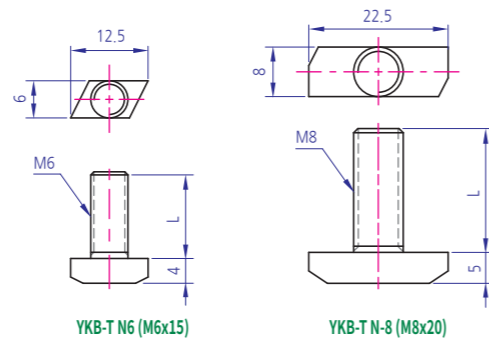
YKB-TG-10 Series

M	Code	L	H	h	B	W	W1	Material	Plating
10	YKB-TG10	20,25,30,40	6	5	8	16	10	SWCH10A (SUS)	Ni

T-BOLT(남선형)
YKB-T N SERIES

Technical Data

Material - SWCH10A
Surface processing - N(니켈)
Application - 너트삽입의 번거로움없이 편리하게 조립가능



YKB-T N-6 Series

M	Code	L	H	B	W	Material	Plating
6	YKB-TN6-15	15	4	6	12.5	SWCH10A(SUS)	NI

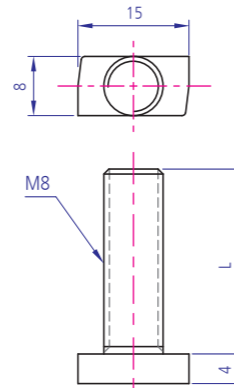
YKB-T N-8 Series

M	Code	L	H	B	W	Material	Plating
8	YKB-TN8	15,20,25,30,35,40	5	8	22.5	SWCH10A(SUS)	NI

T-BOLT(EV형)
YKB-T EV SERIES

Technical Data

Material - SWCH10A
Surface processing - N(니켈), D(다크로도금)
Application - 너트삽입의 번거로움없이 편리하게 조립가능

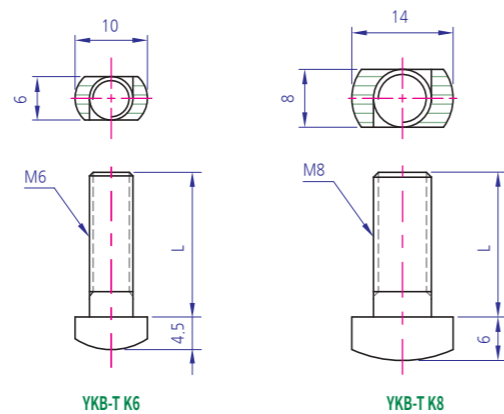


M	Code	L	H	B	W
8	YKB-TE8	15,18,22-1,25,25-1,30,35	4	8	15

T-BOLT(경남형)
YKB-T K SERIES

Technical Data

Material - SWCH10A
Surface processing - N(니켈), E(무전해), A(아연니켈합금도금)
Application - 너트삽입의 번거로움없이 편리하게 조립가능



M	Code	L	H	B	W
6	YKB-TK6	15,15-1(A),20,40	4.5	6	10
8	YKB-TK8	16,20,25	6	8	14

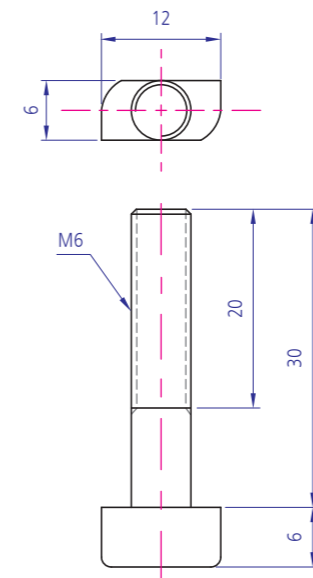
T-BOLT(신성형)
YKB-T S SERIES

Technical Data

Material - SCM435
Surface processing - N(니켈)
Application - 너트삽입의 번거로움없이 편리하게 조립가능



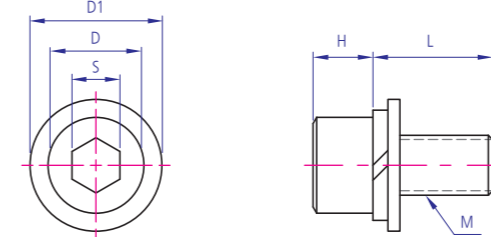
Code : YKB-TS6-30



샘스렌지볼트
YKB-SW

Technical Data

Material - SCM435
Surface processing - N(니켈), Z(아연), E(무전해), S(SUS), R(흑착)
Application - 연결부품(평와셔, 스프링와셔 일체형)

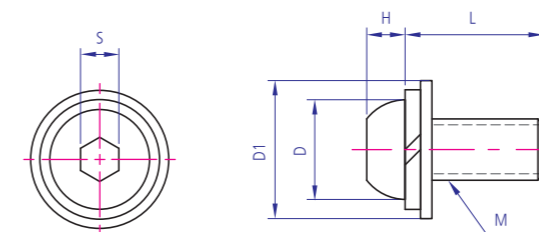


M	Code	L	H	D	D1	S
3	YKB-SWC3	6,8,10,12,15,20,25	3	5.5	7	2.5
4	YKB-SWC4	8,10,12,15,20,25,30	4	7	9	3
5	YKB-SWC5	8,10,12,15,16,18,20,22,25,30	5	8.5	10	4
6	YKB-SWC6	12,15,16,17,18,20,22,25,30,35,40	6	10	13	5
8	YKB-SWC8	15,16,17,18,20,21,22,25,28,30,35,40,45,50,60,80,90,100	8	13	18	6
10	YKB-SWC10	10,15,18,20,22,25,28,30,35,40,45,50	10	16	22	8

샘스동근렌지볼트
YKB-SD

Technical Data

Material - SCM435
Surface processing - N(니켈), E(무전해)
Application - 연결부품(평와셔, 스프링와셔 일체형)



M	Code	L	H	D	D1	S
5	YKB-SWB5	10,12,15,20	3	8.5	10	3
6	YKB-SWB6	12,15,18,20,28	4	10	13	4
8	YKB-SWB8	15,18,20	5	13	18	5

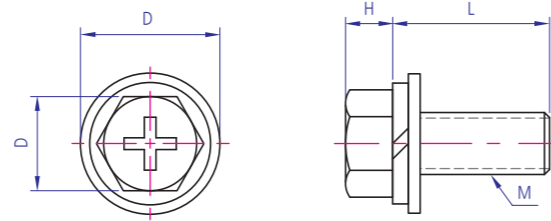
Roller
Bearing Holder
Motor Base
Bracket
Multi Block
Joint
Hinge
Magnet
Handle
Foot Base
방진구
Leveling Foot
Cover
End Cap
Bolt
Nut
Washer
Special
Profile
Caster

Roller
Bearing Holder
Motor Base
Bracket
Multi Block
Joint
Hinge
Magnet
Handle
Foot Base
방진구
Leveling Foot
Cover
End Cap
Bolt
Nut
Washer
Special
Profile
Caster

샘스십자볼트
YKB-SC

Technical Data

Material - S45C
Surface processing - N(니켈), Z(아연)
Application - 연결부품(평와셔, 스프링와셔 일체형)



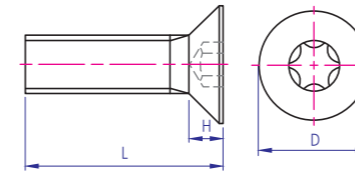
M	Code	L	H	B	D
6	YKB-SC6	8,10,12,14,16,17,18,20,25,30,35,40,80	4.5	10	13
8	YKB-SC8	10,12,15,16,18,20,22,25,30,35,40,80	6	12	18



접시 핀 별렌치볼트
YKB-P

Technical Data

Material - SCM435, SUS304
Surface processing - N(니켈)
Application - 임의로 체결을 해체 할 수 없도록
고안된 제품 체결 및 해체시 전용 공구 SRX 사용
접시머리 별렌치(핀포함)타입



	D	H	S	P
M3	6	1.7	T10	0.5
M4	8	2.3	T20	0.7
M5	10	2.8	T25	0.8
M6	12	3.3	T30	1

*SRH 전용 렌치

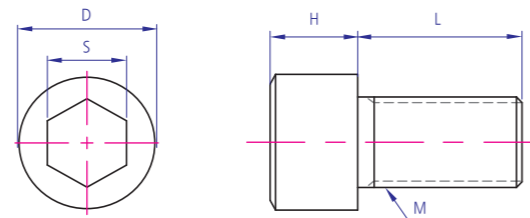
Part Number	B	L1	L2	MASS(g)	QTY PER PACK
SRH-2	2	50	16	1.8	1
SRH-2.5	2.5	56	18	3.1	1
SRH-3	3	63	20	5	1
SRH-4	4	70	25	10	1
SRH-5	5	80	28	18	1
SRH-6	6	90	32	35	1



렌지볼트
YKB-WO

Technical Data

Material - SCM435, SUS304
Surface processing - N(니켈), E(무전해), 아연(Z), SUS(S), B(흑착)
Application - 프로파일 조립 및 브라켓 조립시 사용



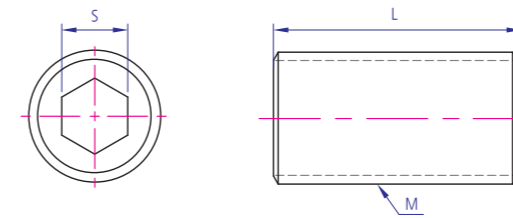
	Code	L	H	D	S
M3	YKB-WC3	6~80	3	5.5	2.5
M4	YKB-WC4	6~120	4	7	3
M5	YKB-WC5	6~150	5	8.5	4
M6	YKB-WC6	8~190	6	10	5
M8	YKB-WC8	10~180	8	13	6
M10	YKB-WC10	10~170	10	16	8
M12	YKB-WC12	15~300	12	18	10
M16	YKB-WC16	20~280	16	24	14



무두렌지볼트
YKB-WM

Technical Data

Material - SCM435, SUS304
Surface processing - Ni(니켈), E(무전해), S(SUS), B(흑착)
Application - 프로파일 조립 및 브라켓 조립시 사용
참고 - 플림방지 코팅가능



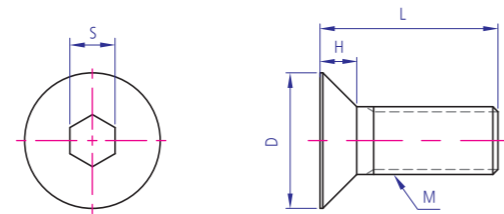
	Code	L	S
M3	YKB-WS3	3~30	1.5
M4	YKB-WS4	4~50	2
M5	YKB-WS5	5~50	2.5
M6	YKB-WS6	5~50	3
M8	YKB-WS8	6~80	4
M10	YKB-WS10	8~90	5
M12	YKB-WS12	10~90	6
M16	YKB-WS16	15~90	8
M20	YKB-WS20	20	



접시렌지볼트
YKB-WS

Technical Data

Material - SCM435, SUS304
Surface processing - N(니켈), Z(아연), S(SUS), E(무전해), B(흑착)
Application - 프로파일 조립 및 브라켓 조립시 사용



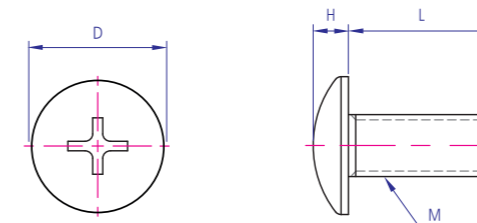
	Code	L	H	D	S
M3	YKB-WF3	5~30	1.7	6	2
M4	YKB-WF4	6~30	2.3	8	2.5
M5	YKB-WF5	8~40	2.8	10	3
M6	YKB-WF6	8~80	3.3	12	4
M8	YKB-WF8	10~80	4.4	15	5
M10	YKB-WF10	15~80	5.5	20	6
M12	YKB-WF12	20~100	6.5	24	8



트러스십자볼트
YKB-TR

Technical Data

Material - SWCH10A, SUS304
Surface processing - Ni(니켈), S(SUS)
Application - 프로파일 조립 및 브라켓 조립시 사용



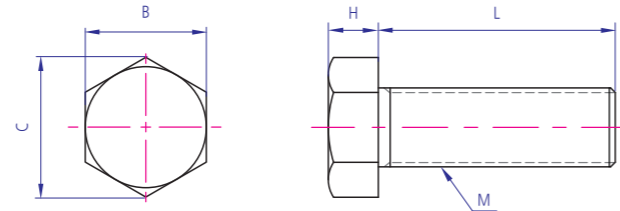
M	Code	L	H	D
4	YKB-TR4	6, 8, 10, 12, 15	2.5	9.4
5	YKB-TR5	6, 8, 10, 12, 15, 16, 20, 25	3.1	11.8
6	YKB-TR6	8, 10, 12, 15, 16, 20, 25, 30, 60	3.7	13.5
8	YKB-TR8	15, 16, 20, 25	4.8	17.8



육각볼트
YKB-H

Technical Data

Material - SWCH10A, SCM435, SUS304
Surface processing - N(니켈), S(SUS), E(무전해), 흑차(B), 아연(Z)
Application - 프로파일 조립 및 브라켓 조립시 사용

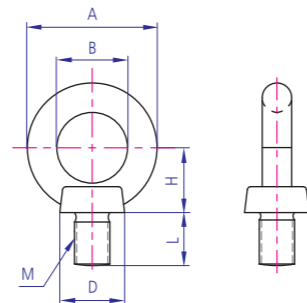


M	Code	L	H	B	C
6	YKB-H6	10~100	4	10	11.5
8	YKB-H8	10~170	5.5	13	15
10	YKB-H10	20~200	7	17	19.6
12	YKB-H12	20~300	8	19	21.9
16	YKB-H16	20~340	10	24	27.7
20	YKB-H20	40~580	13	30	34.6
24	YKB-H24	45~300	15	36	41.6
30	YKB-H30	55~160	19	46	53.1

아이볼트
YKB-I

Technical Data

Material - Stainless
Surface processing - 전해연마 N(니켈), Z(아연), S(SUS), ZW(아연백색), ZN(아연칼러)
Application - 분.배전반, 기타 산업기계

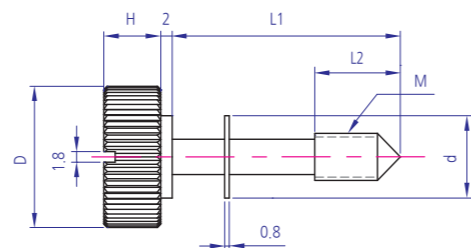


	Code	A	B	D	H	L
M8	YKB-E8	32.6	20	16	17	15
M10	YKB-E10	41	25	20	21	18
M12	YKB-E12	50	30	25	26	22
M16	YKB-E16	60	35	30	30	27
M20	YKB-E20	72	40	35	35	30
M24	YKB-E24	90	50	45	45	38
M30	YKB-E30	110	60	60	55	45

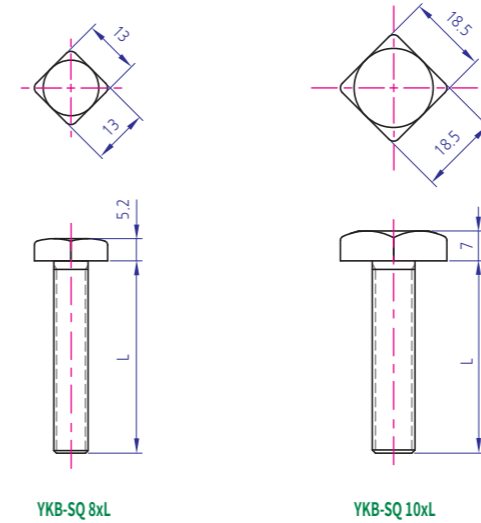
노브볼트
YKB-CE-3006

Technical Data

Material - SUS304
Surface processing - 크롬도금
Application - 분.배전반, 기타 산업기계



제품명	Code	M	D	H	L1	L2	d
CE-3006-L4	YKB-CE-3006-L4	4	15	8	20, 25, 30	12	10
CE-3006-L5	YKB-CE-3006-L5	5	15	8	20, 25, 30, 40	12	12
CE-3006-L6	YKB-CE-3006-L6	6	18	10	30, 35, 40, 50	15	12
CE-3006-L8	YKB-CE-3006-L8	8	24	10	40, 50	15	14
CE-3006-S4	YKB-CE-3006-S4	4	15	8	10, 15	10	10
CE-3006-S5	YKB-CE-3006-S5	5	15	8	10, 15	10	12
CE-3006-S6	YKB-CE-3006-S6	6	18	10	10, 15	10	12



M	Code	L	H	B	Material	Plating
8	YKB-SQ8	20, 22, 30, 35, 40, 45	5.2	13	SCM435	Zn
10	YKB-SQ10	40, 45, 50	7	18.5		



사각볼트
YKB-SQ

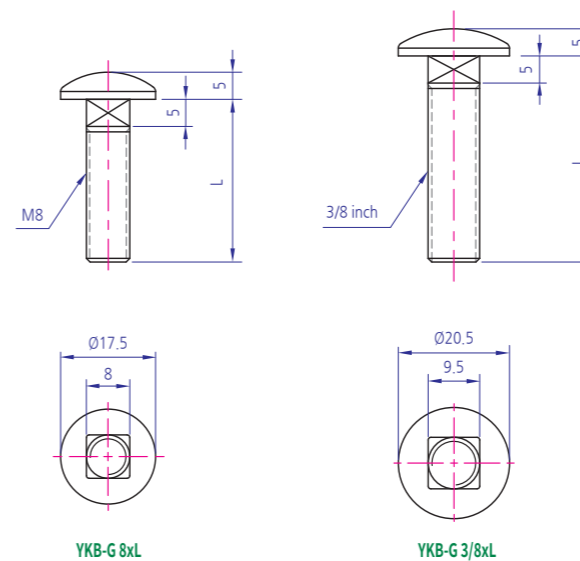
Technical Data

Material - SCM435
Surface processing - Zn(백색)
Application - 연결부품

근각볼트
YKB-G

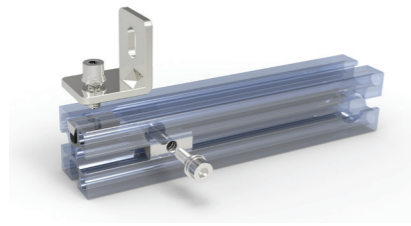
Technical Data

Material - SCM435
Surface processing - Zn(백색)
Application - 연결부품



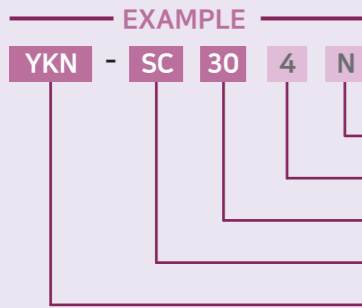
M	Code	L	H	h	D	B	Material	Plating
M8	YKB-TCD8	20, 30, 35	5	5	17.5	8	SCM435	Ni Zn(Wht)
3/8 inch	YKB-TCD3-8	25, 38, 57	5	5	20.5	9.5		





너트는 일반적인 너트부터 T볼트 체결용 너트, 볼트에 너트를 연결 후 프로파일 홈에 삽입하여 체결하는 방식, 너트를 프로파일 T홈에 삽입하여 체결하는 방식 등 다양한 사이즈와 종류들을 제공하여 드릴 수 있습니다.

Nut Ordering Code



EXAMPLE = 영광테크 스프링너트 중심형 프로파일 30용 너트지름 4 후처리 니켈

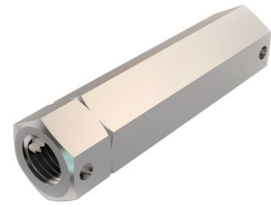
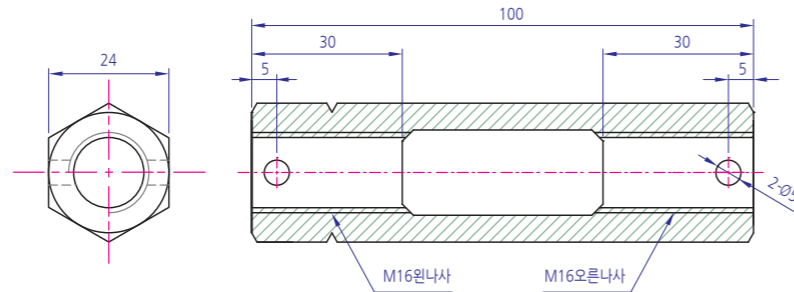
재질/후처리(Materials)
너트 지름(Screw Dia)
Profile 규격
Series
Yeung Kwang Nut

2d, 3d 및 상세한 내용은 홈페이지(www.yktec.co.kr) 참조



HANGER SHAFT
YKB-TB-M16x100

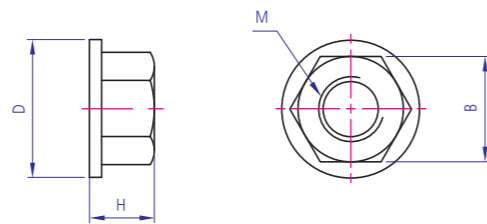
Technical Data
Material - SS400
Surface processing - ENI(무전해니켈), 니켈
Application - HANGER SHAFT용
참고 - 다양한 SIZE 주문제작



Code : YKB-TB16-100AE

플렌지너트
YKN-F

Technical Data
Material - SWCH10A,SUS
Surface processing - N(니켈), Z(아연), E(무전해), S(SUS), B(흑색)
Application - T-bolt 체결용 Nut

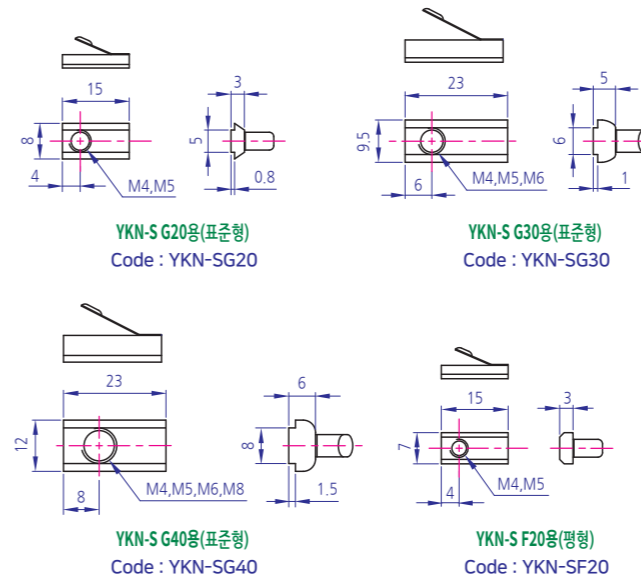


	Code	D	H	B
M4	YKN-F4-7	10	5	7
M5	YKN-F5-8	11.5	5	8
M6	YKN-F6-10	13.5	6	10
M8	YKN-F8-12	17	8	12
M8*13	YKN-F8-13	17	8	13



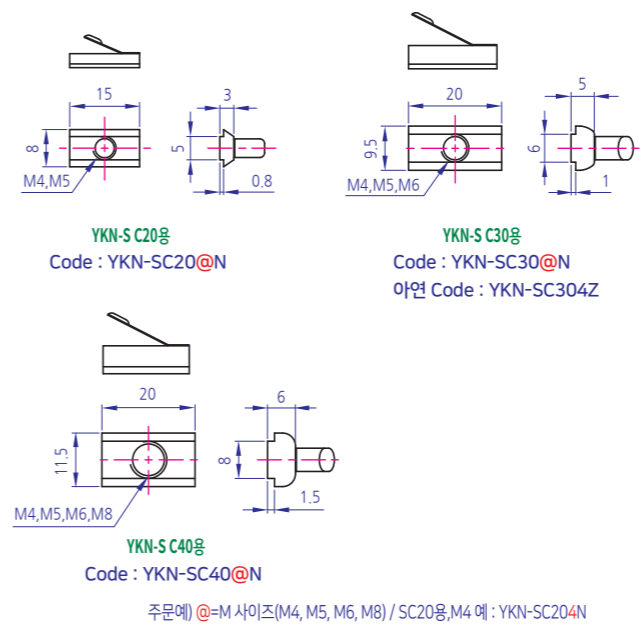
스프링너트(표준형)
YKN-S G SERIES

Technical Data
Material - SWRM8K
Surface processing - NI(니켈), Z(아연), E(무전해), S(SUS)
Application - frame홈 삽입후 스프링의 텐션으로 인하여 원하는 위치에 고정,수직방향으로 조립시 nut의 흘러내림 방지



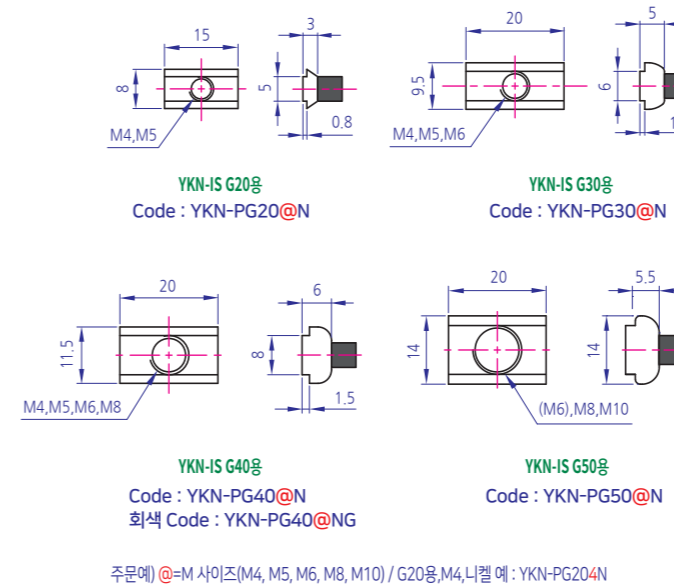
스프링너트(중심형)
YKN-S C SERIES

Technical Data
Material - SWRM8K
Surface processing - NI(니켈)
Application - frame홈 삽입후 스프링의 텐션으로 인하여 원하는 위치에 고정,수직방향으로 조립시 nut의 흘러내림 방지



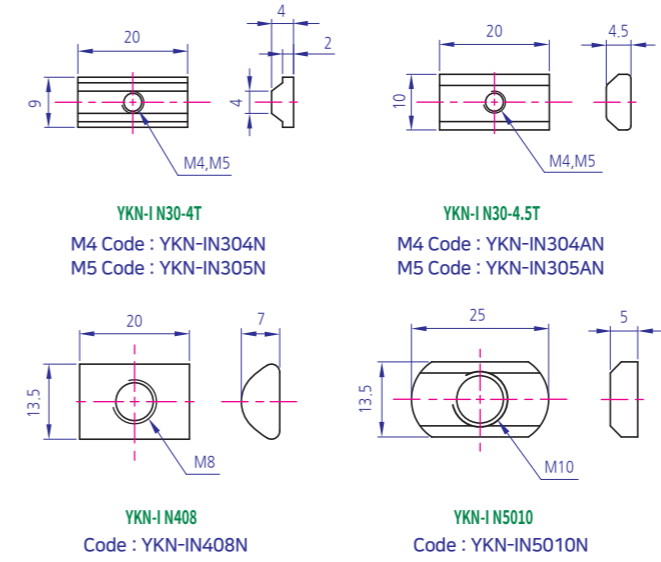
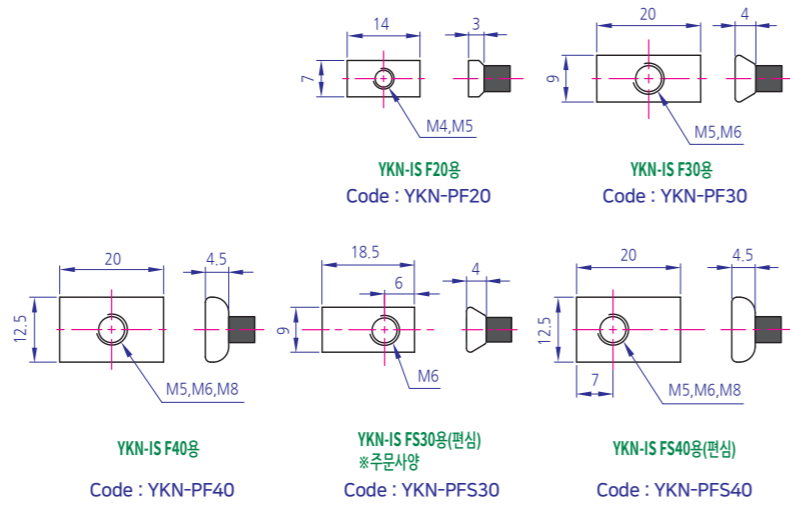
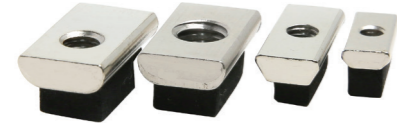
스펀지너트(표준형)
YKN-IS G SERIES

Technical Data
Material - SWRM8K
Surface processing - NI(니켈)
Application - frame홈 삽입후 스프링의 텐션으로 인하여 원하는 위치에 고정,수직방향으로 조립시 nut의 흘러내림 방지



스펀지너트(평형) YKN-IS F SERIES

Technical Data
Material - SWRM8K
Surface processing - NI(니켈), E(무전해니켈)
Application - frame 흡입후 스프링의 텐션으로 인하여 원하는 위치에 고정, 수직방향으로 조립시 nut의 흘러내림 방지



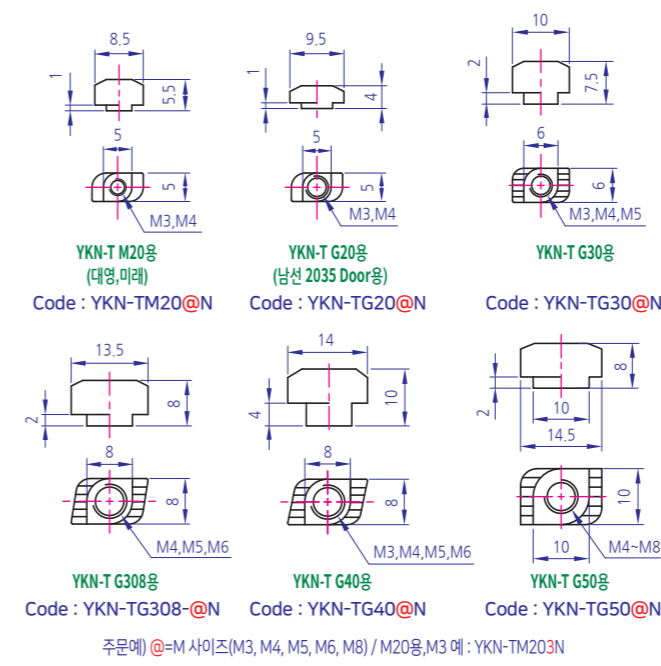
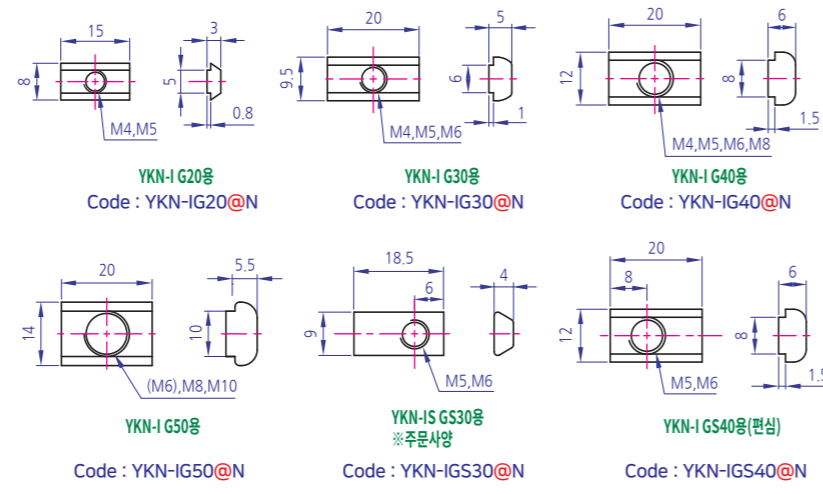
인서트너트(남선형) YKN-I N SERIES

Technical Data
Material - SWRM8K
Surface processing - NI(니켈)
Application - 프로파일 조립시 T홈 부위에 삽입하여 체결



인서트너트(표준형) YKN-I G SERIES

Technical Data
Material - SWRM8K
Surface processing - NI(니켈)
Application - 프로파일 조립시 T홈 부위에 삽입하여 체결



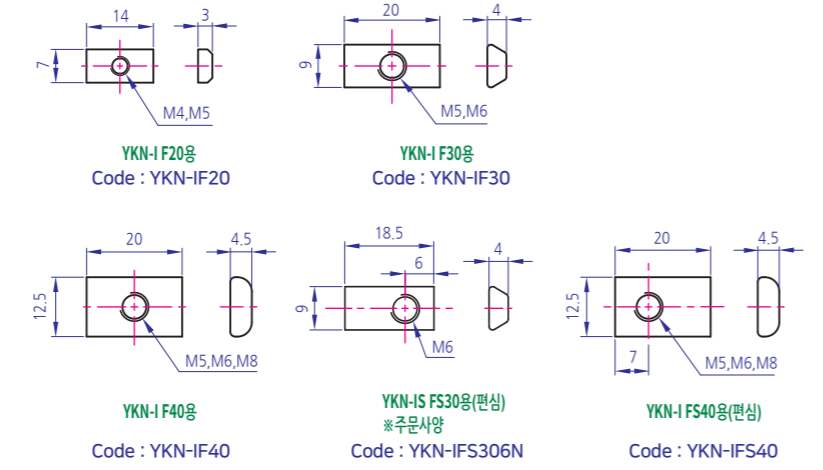
T너트(표준형) YKN-T SERIES

Technical Data
Material - ZINC ALLOY, STEEL
Surface processing - NI(니켈), E(무전해)
Application - 볼트에 직접 너트를 연결후 프레임홈에 너트를 삽입하여 체결하는 방식



인서트너트(평형) YKN-I F SERIES

Technical Data
Material - SWRM8K
Surface processing - NI(니켈)
Application - 프로파일 조립시 T홈 부위에 삽입하여 체결



T너트(스틸) YKN-T ST SERIES

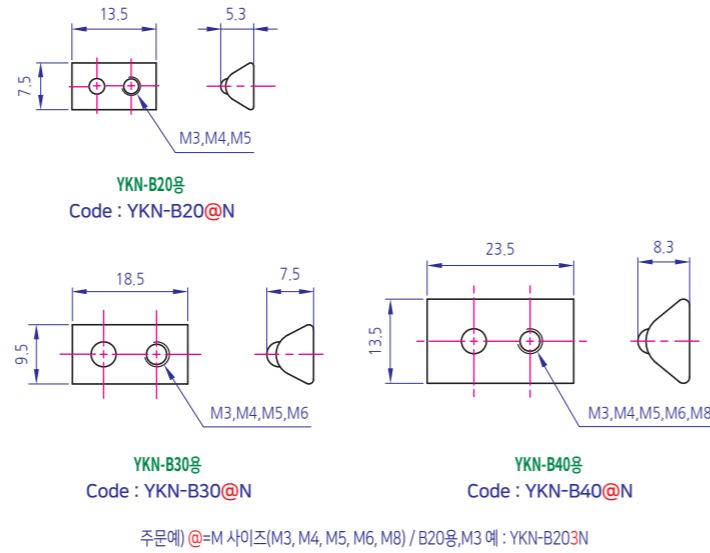
Technical Data
Material - SWCH10A
Surface processing - NI(니켈)
Application - 볼트에 직접 너트를 연결후 프레임홈에 너트를 삽입하여 체결하는 방식



볼너트
YKN-B

Technical Data

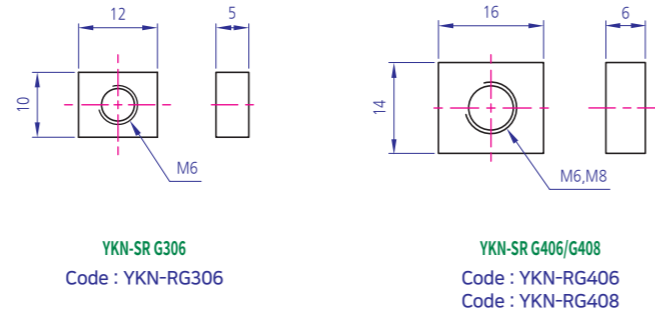
Material - SWRM8K
Surface processing - Ni(니켈)
Application - frame 홈에 삽입후 볼의 텐션으로 원하는 위치에 고정할 수 있습니다.
참고 - 발주예) 30 PROFILE용 M5 TAP: TKN-B 305, 주문제작 가능



직사각너트(표준형)
YKN-SR G SERIES

Technical Data

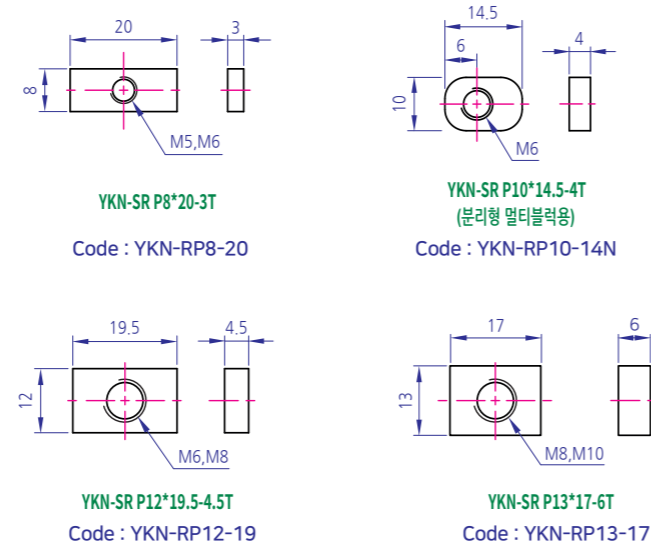
Material - SWCH10A
Surface processing - Ni(니켈), Z(아연), E(무전해), NP(무도금)
Application - 선삽입형 체결 너트



직사각너트(P형)
YKN-SR P SERIES

Technical Data

Material - SWCH10A
Surface processing - Ni(니켈), Z(아연), E(무전해)
Application - 선삽입형 체결 너트

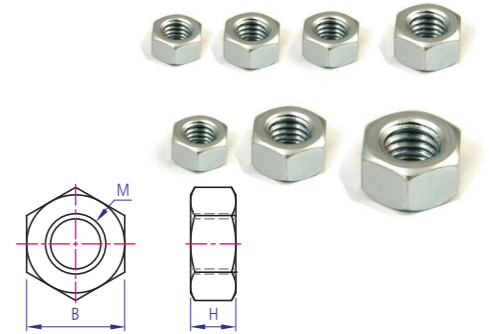


규격	Code	H	B
M2	YKN-H2	1.6	4
M3	YKN-H3	2.4	5.5
M4	YKN-H4	3.2	7
M5	YKN-H5	4	8
M6	YKN-H6	5	10
M8	YKN-H8	6.5	13
M10	YKN-H10	8	17
M12	YKN-H12	10	19
M14	YKN-H14	11	22
M16	YKN-H16	13	24
M18	YKN-H18	15	27
M20	YKN-H20	16	30
M22	YKN-H22	18	32
M24	YKN-H24	19	36
M30	YKN-H30	20	46

육각너트
YKN-H

Technical Data

Material - SWCH10A, SUS304, SCM435
Surface processing - Ni(니켈), Z(아연), E(무전해), S(SUS), R(흑착)
Application - BOLT 고정용



규격	Code	W	T	M
YKN-SQ G4(분리 멀티블럭용)	YKN-SQG7-7Z	7	2T	M4
YKN-SQ G20	YKN-SQG20	8	2T	M3(주문사양), M4, M5
YKN-SQ G20	YKN-SQG20@AN	8	3T	M3(주문사양), M4, M5
YKN-SQ G30	YKN-SQG30	10	5T	M4, M5, M6
YKN-SQ G40	YKN-SQG40	14	6T	M6, M8
YKN-SQ P13×13	YKN-SQP13-13N	13	6T	M8
YKN-SQ P19×19	YKN-SQP19-19N	19	6T	M5, M6, M8

주문예 @=M 사이즈(M3, M4, M5) / G20용-3T, M4, 니켈 예 : YKN-SQG204AN

정사각너트
YKN-SQ G, P SERIES

Technical Data

Material - SWCH10A
Surface processing - Ni(니켈), Z(아연), E(무전해)
Application - 선삽입형 체결 너트



규격	Code	D	B	H	h
YKN-C M3	YKN-C3	3	5.5	6	3
YKN-C M4	YKN-C4	4	7	8	4
YKN-C M5	YKN-C5	5	8	10	4
YKN-C M6 - 12T	YKN-C6	6	10	12	5
YKN-C M8 - 15T	YKN-C8	8	13	15	7
YKN-C M10	YKN-C10	10	17	18	8
YKN-C M12	YKN-C12	12	19	22	10
YKN-C M14	YKN-C14	14	22	25	11
YKN-C M16	YKN-C16	16	24	28	13
YKN-C M20	YKN-C20	20	30	34	16
YKN-C M24	YKN-C24	24	36	42	19

Technical Data

Material - SCM435, SUS304
Surface processing - N(니켈), S(SUS), E(무전해)
Application - 볼트 끝단부 마감처리



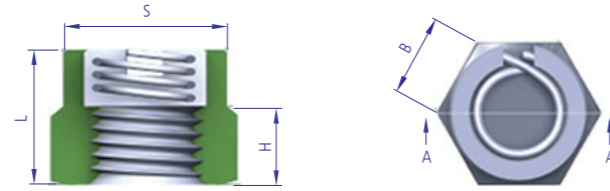
풀림방지 너트
YKN-L

Technical Data

Material - STS304, S45C, SCM435, SS400

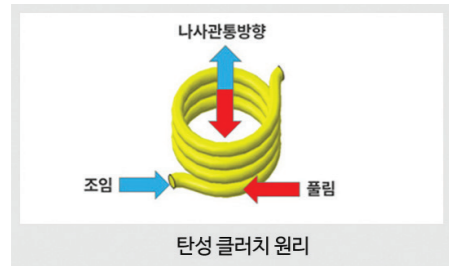
Surface processing - 전가아연도금, 용융아연도금, 니켈합금, 다크로

Application - 스프링의 탄성클러치 이용해 풀림 에너지를 흡수하여 잠금 에너지로 전환 시키는 자동 풀림방지너트



SECTION A-A

규격	Pitch	B, S	L	H
M6	1	10	9.5	5
M8	1.25	13	12.4	6.5
M10	1.5	17	15.5	8
M12	1.75	19	19.5	10
M14	2	22	20.6	11
M16	2	24	22.6	13
M18	2.5	27	26.8	15
M20	2.5	30	28.8	16
M22	2.5	32	30.8	18
M24	3	36	34.8	19
M27	3	41	37.5	22
M30	3.5	46	41.5	24
M33	3.5	50	44.5	26
M36	4	55	49.5	29
M39	4	60	52.5	31
M42	4.5	65	55	32
M45	4.5	70	59	36
M48	5	75	63.5	38
M56	5.5	85	72.1	44
M60	5.5	90	76.2	48
M64	6	95	81.7	51
M72	6	105	87.8	57
M80	6	115	94.7	64



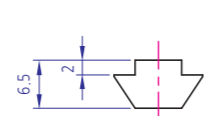
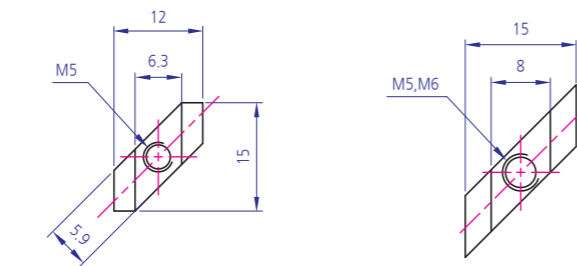
Z너트
YKN-Z SERIES

Technical Data

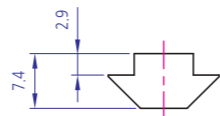
Material - ZINC ALLOY

Surface processing - NI(니켈)

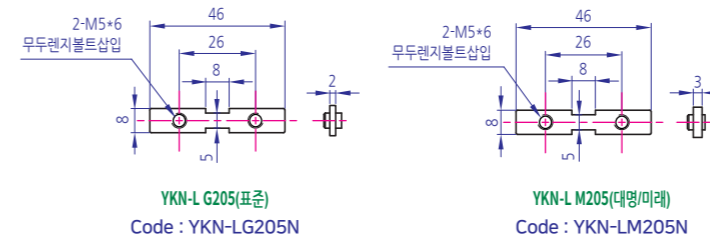
Application - 볼트에 직접 너트를 연결후 프레임홈에 너트를 삽입하여 체결하는 방식



YKN-Z30용
Code : YKN-Z305N

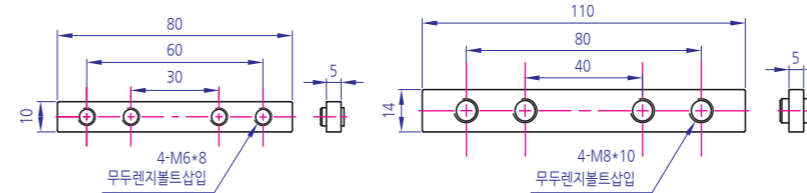


YKN-Z40용
M5 Code : YKN-Z405N
M6 Code : YKN-Z406N



YKN-L G205(표준)
Code : YKN-LG205N

YKN-L M205(대형/미레)
Code : YKN-LM205N

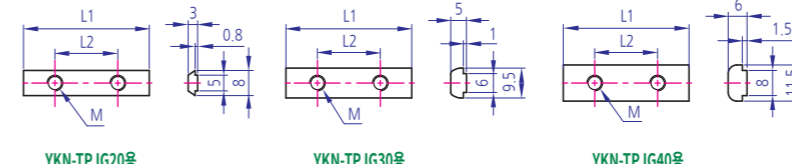


YKN-L G306
Code : YKN-LG306N

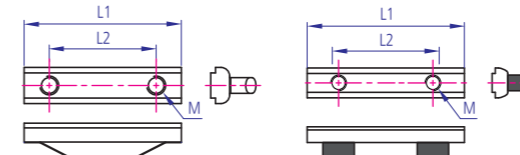
YKN-L G408
Code : YKN-LG408N



표준 인서트 너트



주문제작의 예

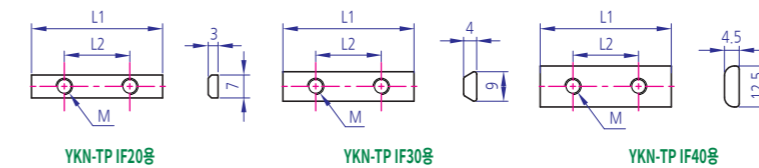


IG 40용 + 스프링 (IGP)

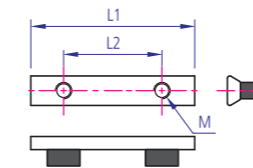
IG 30용 + 스펀지 (IGS)

주문예) IG Series는 주문 사양으로 도면 발주로 진행이 됩니다.

평 인서트 너트



주문제작의 예



IF 30용 + 스펀지 (IFS)

주문예) IF Series는 주문 사양으로 도면 발주로 진행이 됩니다.

롱너트
YKN-L

Technical Data

Material - SPHC

Surface processing - NI(니켈)

Application - 프로파일 수평 연결시 가공없이 조립을 용이하게 함



탭플레이트
YKN-TP IG SERIES

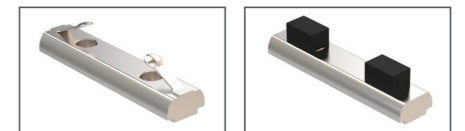
Technical Data

Material - SWRM8K

Surface processing - NI(니켈), ZN(아연), EL(무전해니켈)

Application - 너트의 길이 및 tap 위치 조정가능함. 주문제작 가능

참고 - 프로파일 수평 연결시 가공없이 조립을 용이하게 함



탭플레이트
YKN-TP IF SERIES

Technical Data

Material - SWRM8K

Surface processing - NI(니켈), ZN(아연), EL(무전해니켈)

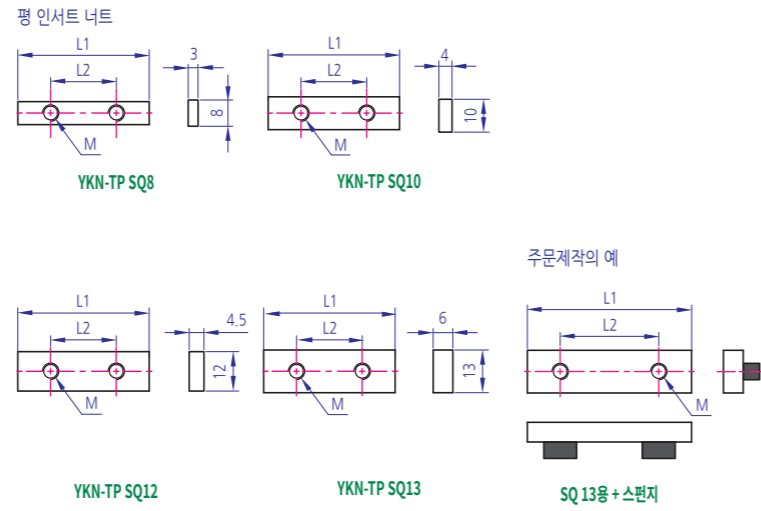
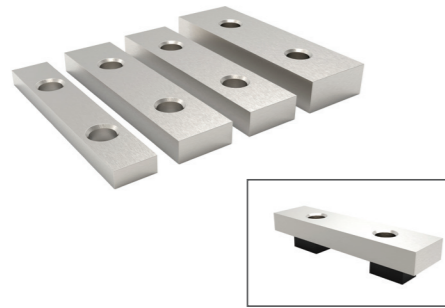
Application - 주문사양

참고 - 너트의 길이 및 tap 위치 조정가능함, SPRING, SPONGE 부착가능, 주문제작 가능



탭플레이트
YKN-TP SQ SERIES

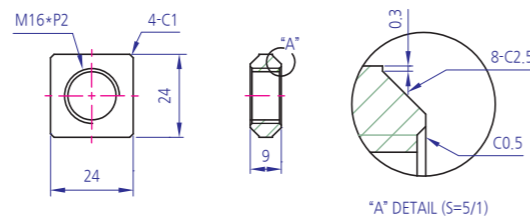
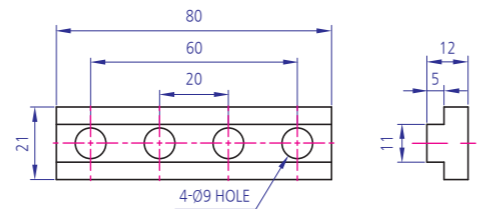
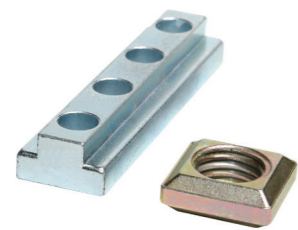
Technical Data
Material - SWRM8K
Surface processing - Ni(니켈), ZN(아연), EL(무전해니켈)
Application - 주문사양



주문예) SQ Series는 주문 사양으로 도면 발주로 진행이 됩니다.

탭플레이트
YKN-TP EV SERIES

Technical Data
Material - SS41
Surface processing - ZN(아연도금), E(무전해)
Application - OHT RAIL용 NUT 주문사양
참고 - 너트의 길이 및 tap 위치 조정가능함. 주문제작 가능

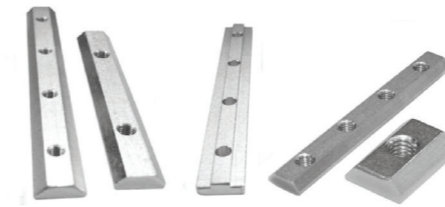
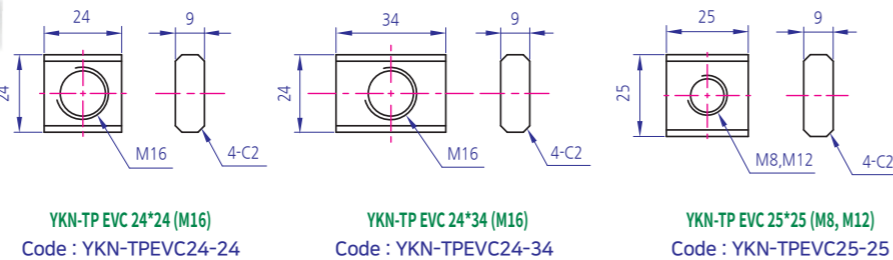


탭플레이트
YKN-TP EV SERIES

Technical Data
Material - STEEL
Surface processing - ZN(아연도금), EN(무전해니켈), ZC(아연칼라)
Application - RAIL용 NUT 주문사양

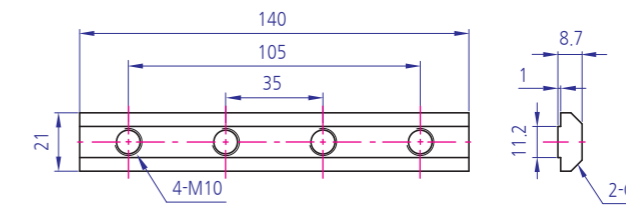
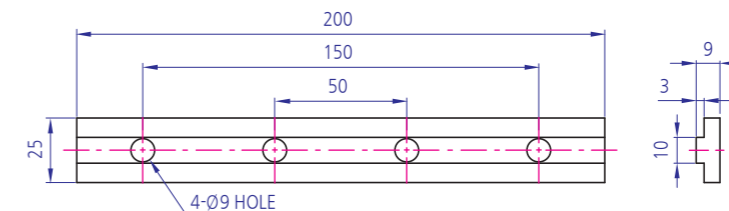
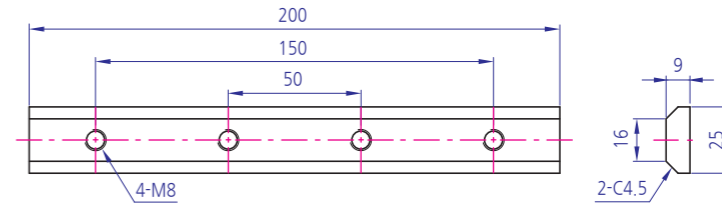
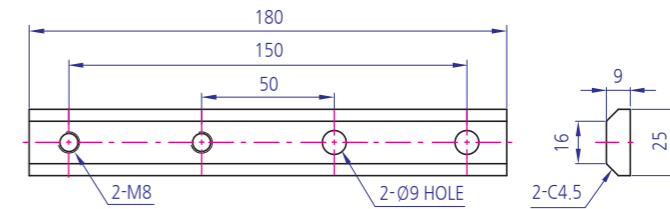
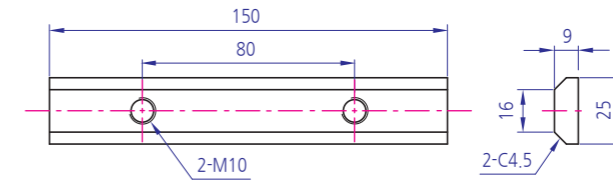


EVC TYPE
(모따기 처리)



탭플레이트
YKN-TP SERIES

Technical Data
Material - STEEL
Surface processing - ZN(아연도금)
Application - RAIL용 NUT 주문사양
참고 - 너트의 길이 및 tap 위치 조정가능함. 주문제작 가능



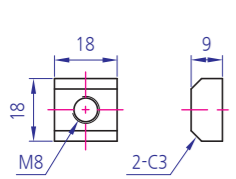
탭플레이트
YKN-TP-EVC-18x9T

Technical Data
Material - STEEL
Surface processing - ZN(아연도금)
Application - RAIL용 NUT 주문사양

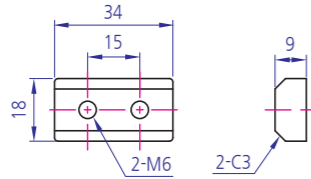


탭플레이트
YKN-TP EV, EVA SERIES

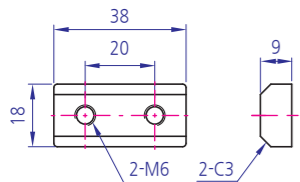
Technical Data
Material - STEEL
Surface processing - ZN(아연도금)
Application - RAIL용 NUT 주문사양



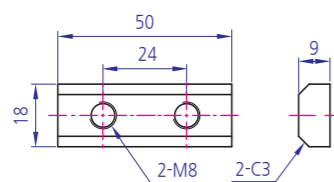
YKN-TP(M8, 2-C3) EVC18*018*9T
Code : YKN-TPEVC18-18



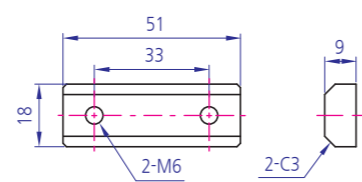
YKN-TP(2-M6, HP15, 2-C3) EVC18*034*9T
Code : YKN-TPEVC18-34



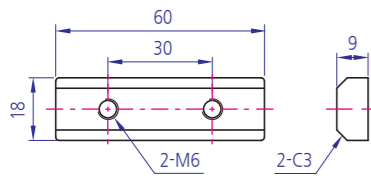
YKN-TP(2-M6, HP20, 2-C3) EVC18*038*9T
Code : YKN-TPEVC18-38



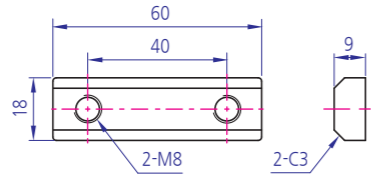
YKN-TP(2-M8, HP24) EVC18*050*9T
Code : YKN-TPEVC18-50



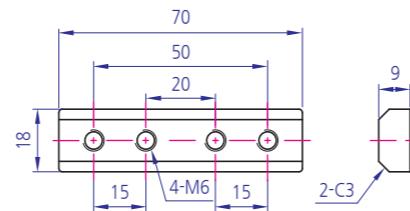
YKN-TP(2-M6, HP33, 2-C3) EVC18*051*9T
Code : YKN-TPEVC18-51



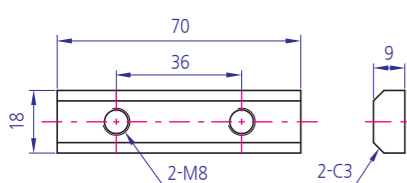
YKN-TP(2-M6, HP30, 2-C3) EVC18*060*9T
Code : YKN-TPEVC18-60



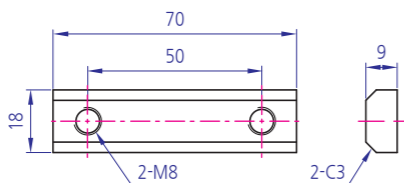
YKN-TP(2-M8, HP40, 2-C3) EVC18*060*9T
Code : YKN-TPEVC18-60A



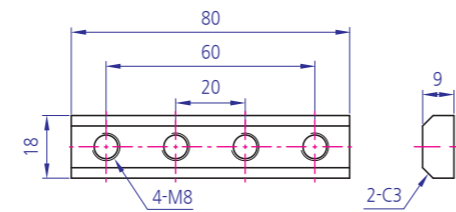
YKN-TP(4-M6, HP15-20-15, 2-C3) EVC18*070*9T
Code : YKN-TPEVC18-70



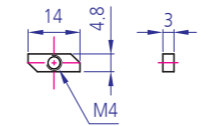
YKN-TP(2-M8, HP36, 2-C3) EVC18*070*9T
Code : YKN-TPEVC18-70



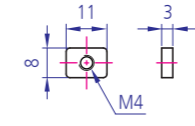
YKN-TP(2-M8, HP50, 2-C3) EVC18*070*9T
Code : YKN-TPEVC18-70



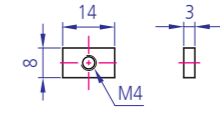
YKN-TP(4-M8, HP20, 2-C3) EVC18*080*9T
Code : YKN-TPEVC18-80



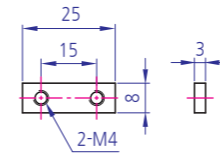
YKN-TP EV14*4.8(M4)
Code : YKN-TPEVD14-4



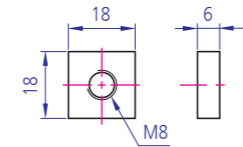
YKN-TP EV11*8(M4)
Code : YKN-TPEV11-8



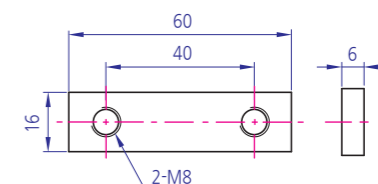
YKN-TP EV8*14(M4)
Code : YKN-TPEV14-8ZN



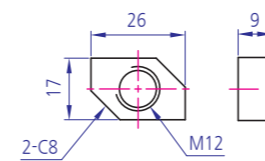
YKN-TP EV25*8(M4)
Code : YKN-TPEV8-25



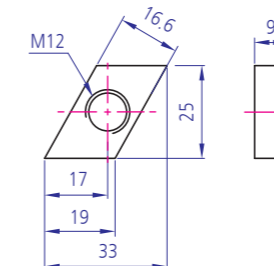
YKN-TP EV18*18(M8)
Code : YKN-TPEV18-18



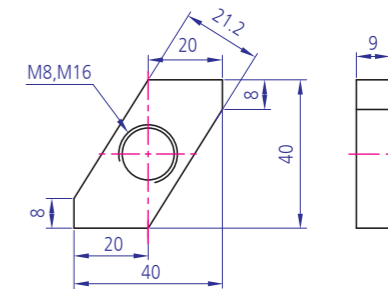
YKN-TP EV60*16(2-M8)



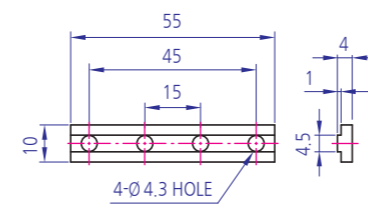
YKN-TP EV17*26(M12)
Code : YKN-TPEVD26-17



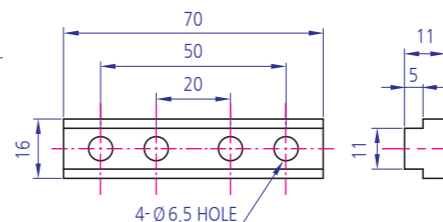
YKN-TP EV33*25(M12)
Code : YKN-TPEVD33-25



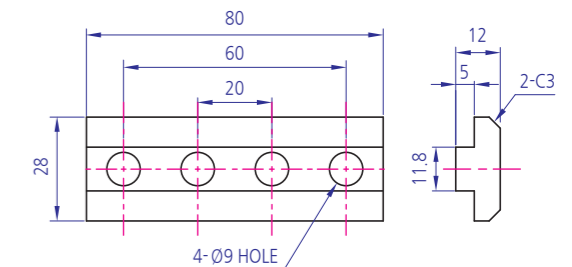
YKN-TP EV20*40 (M8, M16)
Code : YKN-TPEVD20-40



YKN-TP EV55*10(4-Ø 4.3)
Code : YKN-TPEVA55-10



YKN-TP EV70*16(4-Ø 6.5)
Code : YKN-TPEVA16-70ZN

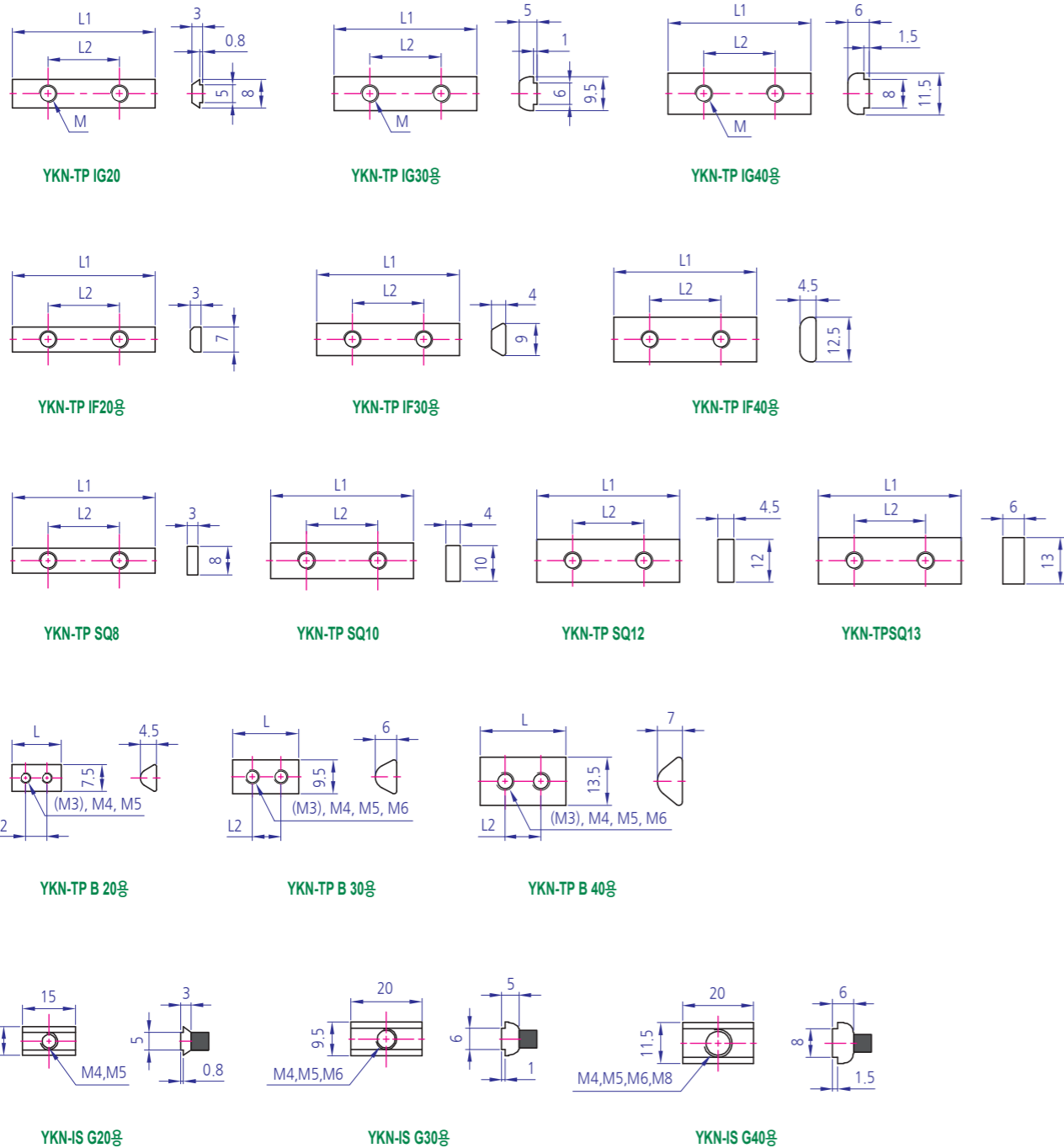


YKN-TP EV80*28(4-Ø 9)
Code : YKN-TPEVA80-28

탭플레이트
YKN-TP L SERIES(장너트)

Technical Data

Material - SWRM8K
Surface processing - Ni(니켈), Z(아연), E(무전해)
Application - 작은너트를 프로파일홀에 삽입하여 작업할때 체결에 어려움을 수월하게 해결가능
참고 - 너트의 길이 및 tap 위치 조정가능함. 주문제작 가능



주문에) 주문 사양으로 도면 발주로 진행이 됩니다.

와셔는 풀림방지용, 접시 렌치볼트 삽입용, 와셔 조인트클립형까지 다양한 사이즈와 종류들을 제공하여 드릴 수 있습니다.

Washer Ordering Code

EXAMPLE
YKW - P 3 E

EXAMPLE = 영광테크 평와셔 지름3 후처리 니켈

재질/후처리(Materials)
 와셔 지름(Screw Dia)
 Series
 Yeung Kwang Washer

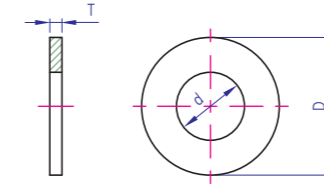
2d, 3d 및 상세한 내용은 홈페이지(www.yktec.co.kr) 참조



평와셔 특주
YKW-P

Technical Data

Material - SPCC, SPHC
Surface processing - Ni(니켈), 무전해(E), SUS(S), 아연(Z)



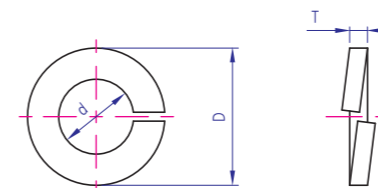
규격	Code	d	D	T
M3	YKW-P3	3.2	7	0.5
M4	YKW-P4	4.3	9	0.8
M5	YKW-P5	5.3	10	1
M6	YKW-P6	6.4	12.5	1.6
M8	YKW-P8	8.4	17	1.6
M10	YKW-P10	10.5	21	2
M12	YKW-P12	13	24	2.5
M16	YKW-P16	17	30	3
M20	YKW-P20	21	37	3
M24	YKW-P24	25	44	4



스프링와셔-표준형
YKW-S-G

Technical Data

Material - SWRH
Surface processing - Ni(니켈), 아연(Z), 무전해(E), SUS(S), 흑착(B)
Application - Bolt 삽입으로 강한체결에 사용(스프링 평와셔만 삽입)



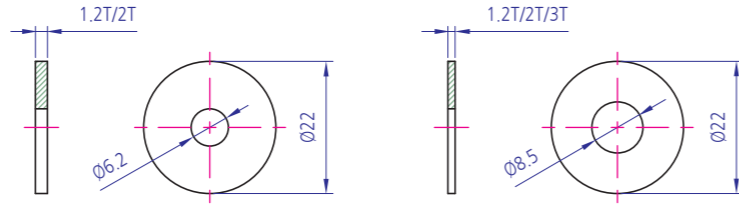
규격	Code	d	D	T
M2		2.1	4.4	0.5
M3	YKW-S3	3.1	5.9	0.7
M4	YKW-S4	4.1	7.6	1.0
M5	YKW-S5	5.4	9.2	1.3
M6	YKW-S6	6.1	12.2	1.5
M8	YKW-S8	8.2	15.4	2.0
M10	YKW-S10	10.2	18.4	2.5
M12	YKW-S12	12.2	21.5	3.0
M16	YKW-S16	16.2	28.0	4.0
M20	YKW-S20	20.2	33.8	5.1
M24	YKW-S24	24.5	40.3	5.9
M30	YKW-S30	30.5	49.9	7.5



평와샤 특수
YKW-P

Technical Data

Material - SPCC
Surface processing - Ni(니켈), 무전해(E), SUS(S), 아연(Z)



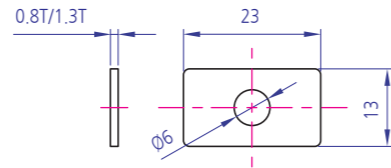
YKW-P 6*22-1.2T/2T
Code : YKW-P6-22

YKW-P 8*22-1.2T/2T/3T
Code : YKW-P8-22

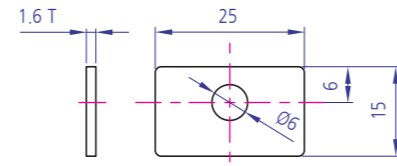
평와샤 직사각
YKW-RP

Technical Data

Material - SPCC
Surface processing - Ni(니켈), 아연(Z), SUS(S), 무전해(E)
Application - Joint Clip W(와셔형으로도 사용가능)



YKW-P R13x23-0.8T/1.3T
0.8T Code : YKW-PR13-23N
1.3T Code : YKW-P13-23N

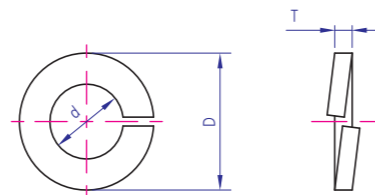


YKW-P R15x25-1.6T
Code : YKW-PR15-25AN

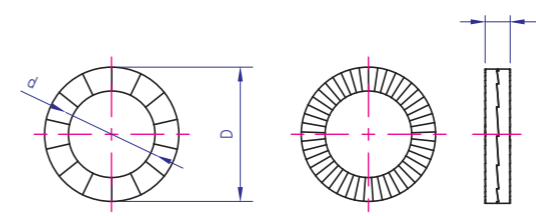
스프링와셔-육각렌지 볼트용
YKW-S W

Technical Data

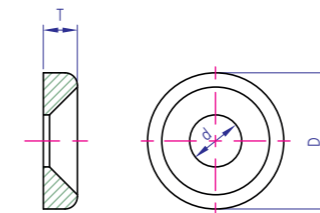
Material - SWRH
Surface processing - Ni(니켈), Z(아연), S(SUS), E(무전해), B(흑색)
Application - BOLT 삽입으로 강한체결에 사용 (스프링, 평와샤만 삽입)



규격	Code	d	D	T
M5		5.1	9.2	1.3
M6	YKW-SW6	6.1	10	1.5
M8	YKW-SW8	8.1	13	2.0
M10		10.2	18.4	2.5
M12		12.2	21.5	3
M20		20.2	33.8	5.1



규격	Code	d	D	T
M4	YKW-NL4	4.4	7.6	1.8
M5	YKW-NL5	5.4	9	1.8
M6	YKW-NL6	6.5	10.8	1.8
M8	YKW-NL8	8.7	13.5	2.5
M10	YKW-NL10	10.7	16.6	2.5
M12	YKW-NL12	13	19.5	2.5
M14	YKW-NL14	15.2	23	3.4
M16	YKW-NL16	17	25.4	3.4
M18		19.5	29	3.4
M20	YKW-NL20	21.4	30.7	3.4
M22	YKW-NL22	23.4	34.5	3.4
M24	YKW-NL24	25.3	39	3.4
M27		28.4	42	6.6
M30	YKW-NL30	31.4	47	6.6
M33		34.4	48.5	6.6
M36		37.4	55	6.6



규격	Code	d	D	T
M3		3.2	9	2.5
M4	YKW-N4N	4.2	11	3
M5	YKW-N5N	5.2	13	3.5
M6	YKW-N6N	6.2	16	3.7
M8	YKW-N8N	8.2	22	5.5
M10	YKW-N10N	10.2	28	6.5

플림방지용 와셔
YKW-LK

Technical Data

Material - SUS, SK5
Surface processing - AN
Application - 플림방지용



네끄와샤
YKW-N

Technical Data

Material - STEEL
Surface processing - Ni(니켈)
Application - 접시머리 렌지볼트 삽입용



Caster Profile Special Washer Nut Bolt End Cap Cover Levelling Foot 방진구 Foot Base Handle Magnet Hinge Joint Multi Block Bracket Motor Base Bearing Holder Roller

Caster Profile Special Washer Nut Bolt End Cap Cover Levelling Foot 방진구 Foot Base Handle Magnet Hinge Joint Multi Block Bracket Motor Base Bearing Holder Roller

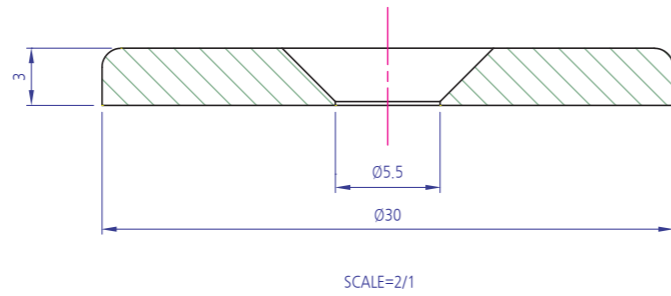
와샤
YKW-MD5-1

Technical Data

Material - PP
Surface processing - White
Application - Guide Pin



Code : YKW-MD5-1



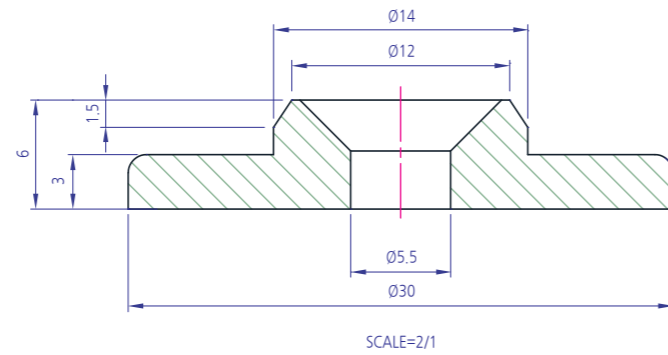
와샤
YKW-MD5-2

Technical Data

Material - PP
Surface processing - White
Application - Guide Pin



Code : YKW-MD5-2



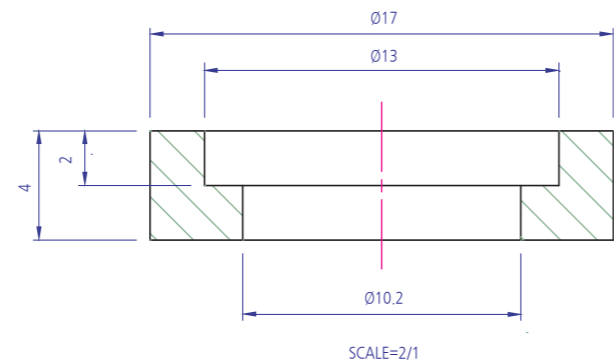
와샤
YKW-MD10-1

Technical Data

Material - PP
Surface processing - White
Application - Spring Holder



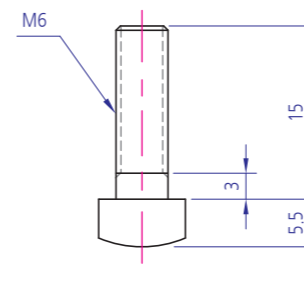
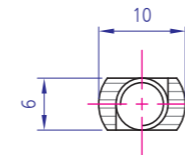
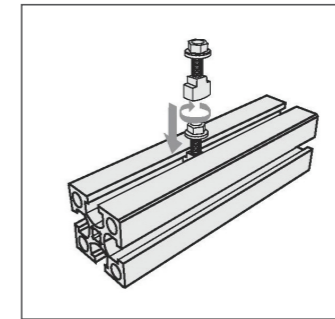
Code : YKW-MD10-1



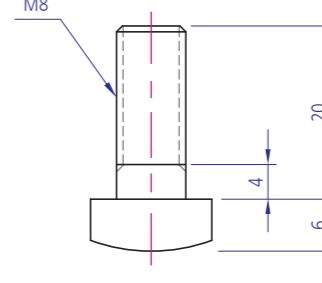
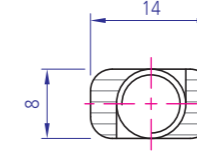
T BOLT(표준형)
YKB-T G SERIES

Technical Data

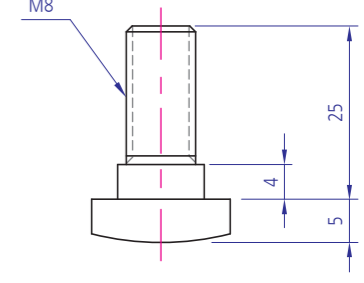
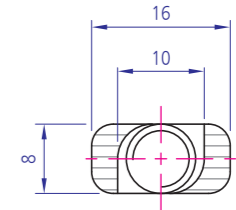
Material S20C, S45C, SS400
Surface Processing 무전해 니켈도금
Application 너트삽의번거로움없이 편리하게 조립가능
참고 기본품의 L값은 주문생산 가능



YKB-T G6 (M6x15)



YKB-T G8 (M8x20)



YKB-T G10 (M10x20)

YKB-TG-6 Series
YKB-TG-8 Series

M	Code	L	H	h	B	W	Material	Plating
6	YKB-TG6	13,15, 20, 25, 30, 40, 45, 50, 55	5.5	3	6	10	SWCH10A (SUS)	NI
8	YKB-TG8	15,16,18, 20, 25, 28, 30, 35, 40, 45, 50, 55, 60, 65, 68, 70, 75, 95	6	4	8	14		

YKB-TG-10 Series

M	Code	L	H	h	B	W	W1	Material	Plating
10	YKB-TG10	20, 25, 30, 40	6	5	8	16	10	SWCH10A (SUS)	NI

Roller, Bearing Holder, Motor Base, Bracket, Multi Block, Joint, Hinge, Magnet, Handle, Foot Base, 방진구, Levelling Foot, Cover, End Cap, Bolt, Nut, Washer, Special, Profile, Caster

Roller, Bearing Holder, Motor Base, Bracket, Multi Block, Joint, Hinge, Magnet, Handle, Foot Base, 방진구, Levelling Foot, Cover, End Cap, Bolt, Nut, Washer, Special, Profile, Caster

Roller
 Bearing Holder
 Motor Base
 Bracket
 Multi Block
 Joint
 Hinge
 Magnet
 Handle
 Foot Base
 받침구
 Levelling foot
 Cover
 End Cap
 Bolt
 Nut
 Washer
 Special
 Profile
 Caster



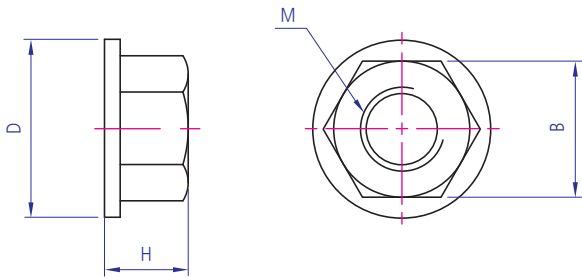
FLANGE NUT YKN-F

Technical Data

Material SWCH10A,SUS

Surface Processing 무전해 니켈도금

Application T-bolt 체결용 Nut



	Code	D	H	B	표면처리
M6	YKN-F6-10	13.5	6	10	무전해 니켈 도금
M8	YKN-F8-12	17	8	12	무전해 니켈 도금



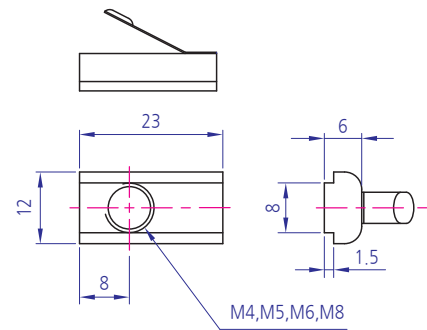
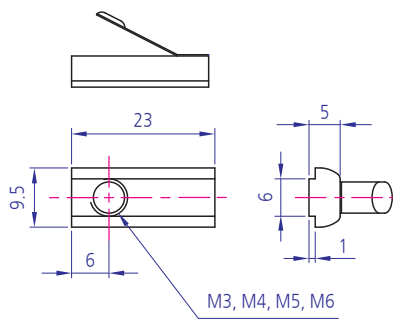
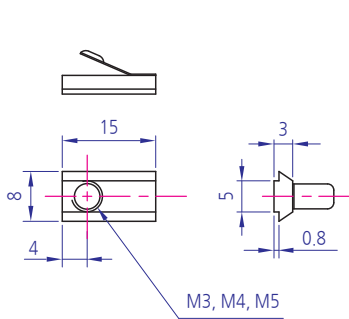
스프링 너트(표준형) YKN-S G SERIES

Technical Data

Material SWRM8K

Surface Processing 무전해 니켈도금

Application frame홈에 삽입후 스프링의 텐션으로 인하여 원하는 위치에 고정, 수직방향으로 조립시 nut의 흘러내림을 방지.



YKN-S G20용(표준형)
Code : YKN-SG20

YKN-S G30용(표준형)
Code : YKN-SG30

YKN-S G40용(표준형)
Code : YKN-SG40