

SPECIAL ORDER

SPECIAL ORDER

캐가스터드

page 442



YKBK-CT-150x340x33

석션패드

page 442



YKO-R D7x10.8

드럼 케이블

page 442



YKBK-DR D265x101

위치 결정핀

page 443



YKB-P 위치결정핀

Race Way

page 443



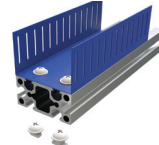
YKBK-RACEWAY-60x58

전장부품

page 443 ~ 444



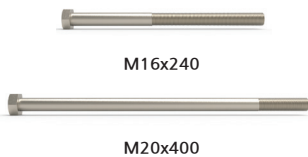
마운트



화스너

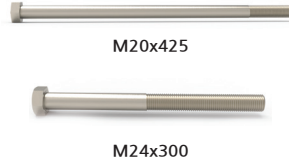
특수볼트

page 444



M16x240

M20x400



M20x425

M24x300



M30xL

레일 가공품

page 444 ~ 446



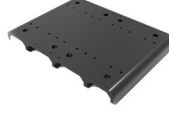
LEVELLING FOOT-A



LEVELLING FOOT-B



RAIL BASE -A



RAIL BASE -B



STOPPER FRAME



RAIL JOINT PLATE



SENSOR BRT-A

로드암

page 447 ~ 448



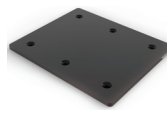
LOAD ARM-1



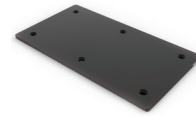
LOAD ARM-2



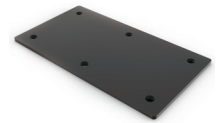
LOAD ARM-3



LOAD ARM PAD-1



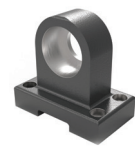
LOAD ARM PAD-2



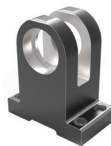
LOAD ARM PAD-3

주물제품

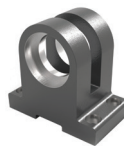
page 449 ~ 451



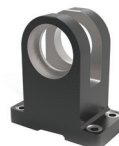
YKBK-C-105x97.5x60



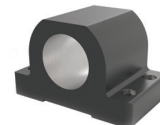
YKBK-C-105x122x60



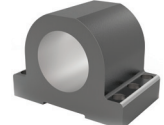
YKBK-C-130x121x69



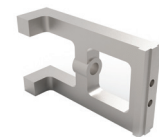
YKBK-C-130x144x69



YKBK-C-140x87x85



YKBK-C-180x130x110



YKBK-CT-115x194.5x52



YKBK-CT-393x253.5x70

쿠션도어

page 451



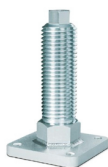
YKBK-M-CSN-D30



YKBK-M-CSN-50x30x30

기타

page 452 ~ 456



ACLS



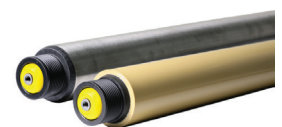
YKLF-MB/MBS SERIES



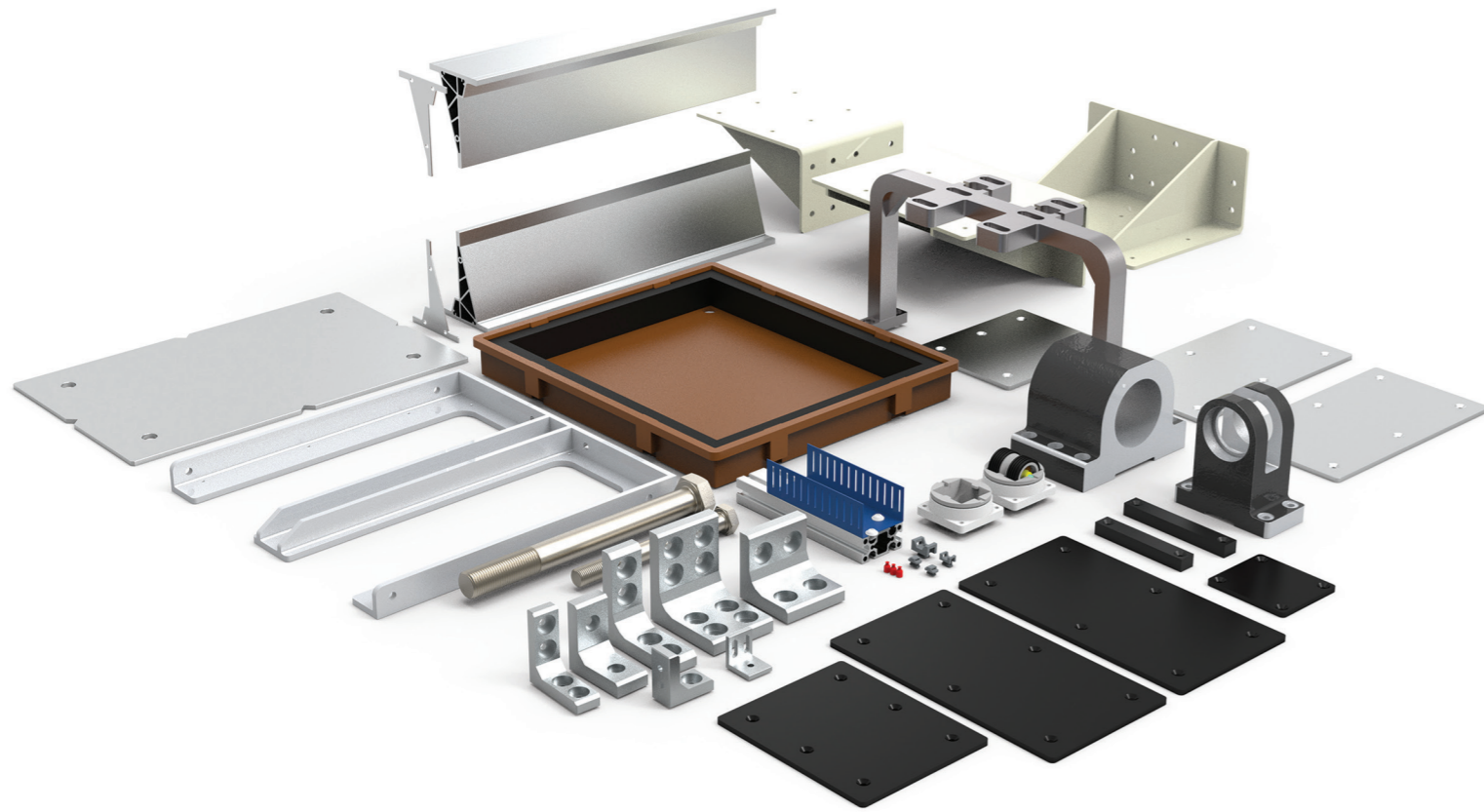
YKLF-TRB SERIES



YKLF-TRH SERIES



VD ROLLER SERIES



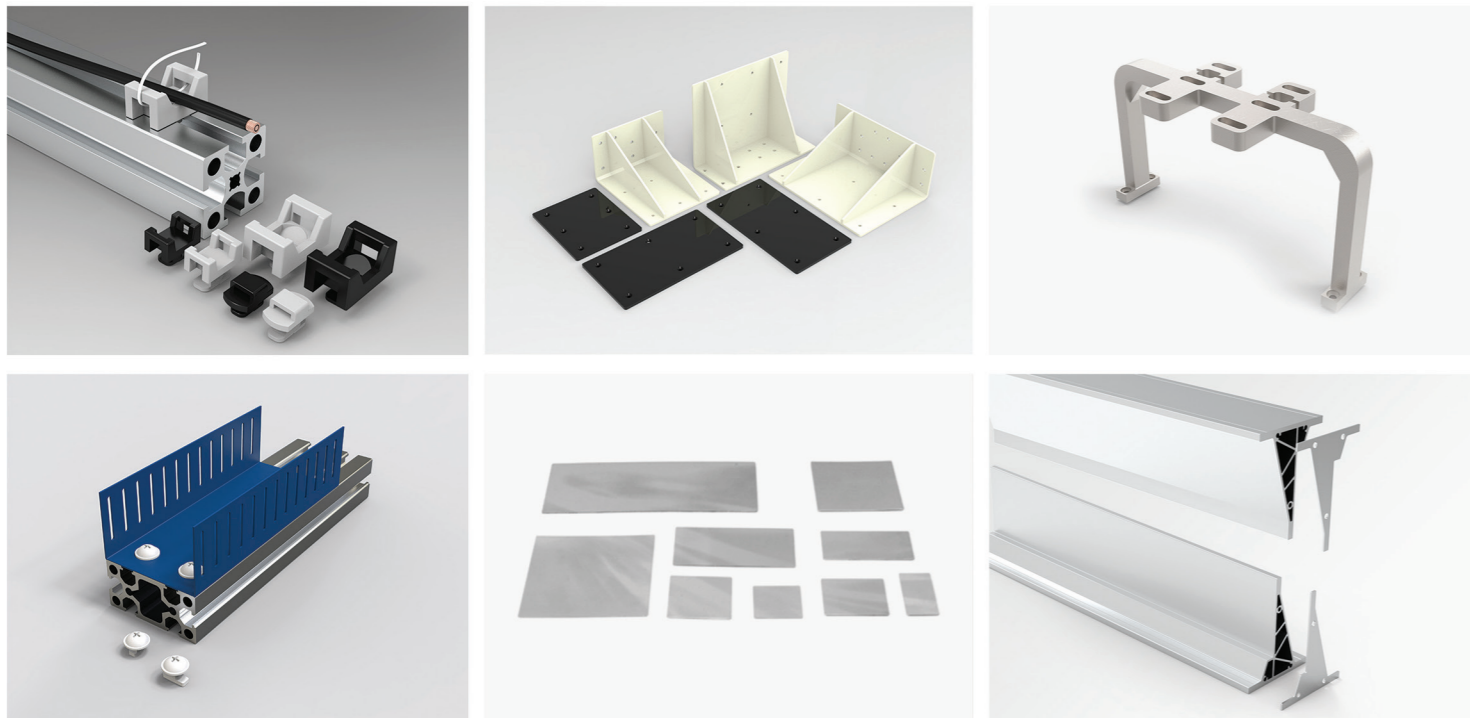
Special Order

재료선택, 설계, 개발까지! 특별주문 제품

주물 제품, 자동화 라인, 캐스터 가이드, 클램프, 화스너, 배선 정리 등 특별 주문제품들 입니다.
 사용되는 재료에서부터 설계, 개발까지 최상의 제품을 최적의 조건으로 공급해 드립니다.



2d, 3d 및 상세한 내용은 홈페이지(www.yktec.co.kr) 참조

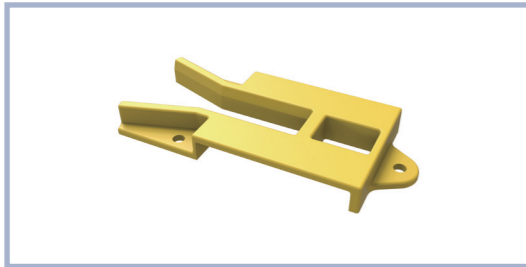


SHELF 공정



1	Material : Aluminum Surface Processing : Silver Application : Loadarm & End Cap Product : YKPF-LD95-1S YKCE-DLD95S
2	Material : ALDC-12 Surface Processing : SILVER(SHOT, 액체도장) Application : 40mm 프로파일용 연결부품 Product : YKBK-DC SF100x100x38
3	Material : SPC, S45C, Antistatic Poly Urethane Surface Processing : Black Coated Application : 고하중용 캐스터 Product : YKCT-PH40 SERIES
4	Material : UHMW Product : LOAD ARM PAD 300X165X6T
5	Material : SS400 Surface Processing : PAINTING BLACK Product : YK-LOAD ARM STOPER
6	Material : SS400 Surface Processing : PAINTING IVORY Product : YK-SHELF Array
7	Material : ALDC-12 Surface Processing : SILVER(SHOT, 액체도장) Application : 40mm 프로파일용 연결부품 Product : YKBK-DC75x75x38
8	Material : Steel Surface Processing : ZN(아연도금) Product : LOAD ARM TAP PLATE
9	Material : AI6063 Surface Processing : WHITE ANODIZING Application : LOAD ARM용 프로파일 Product : L'LOAD ARM

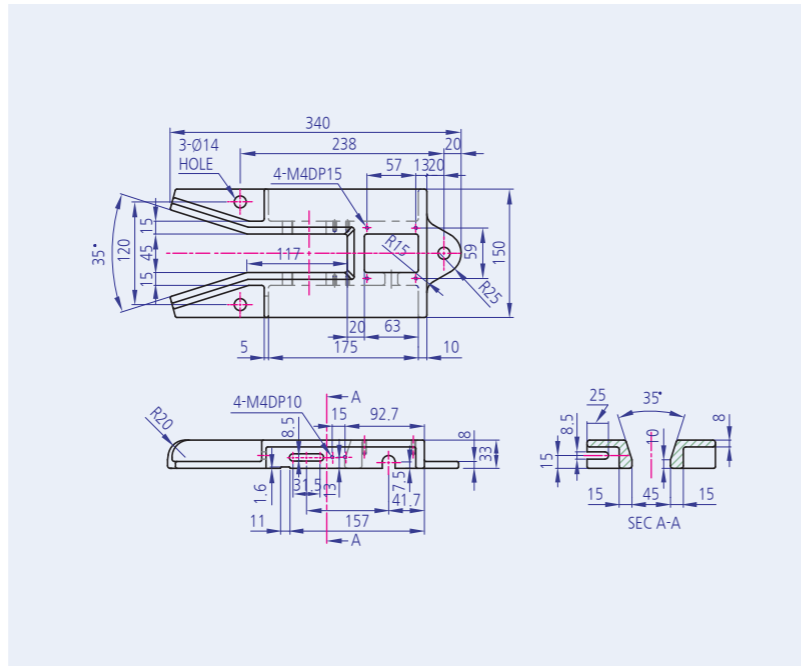
캐스터 가이드
YKBK-CT 340X150X33



Code : YKBK-CT340-1

Technical Data

Material - FCD-400
Surface processing - 분체도장(yellow)
Application - 자동화라인 캐스터 가이드용

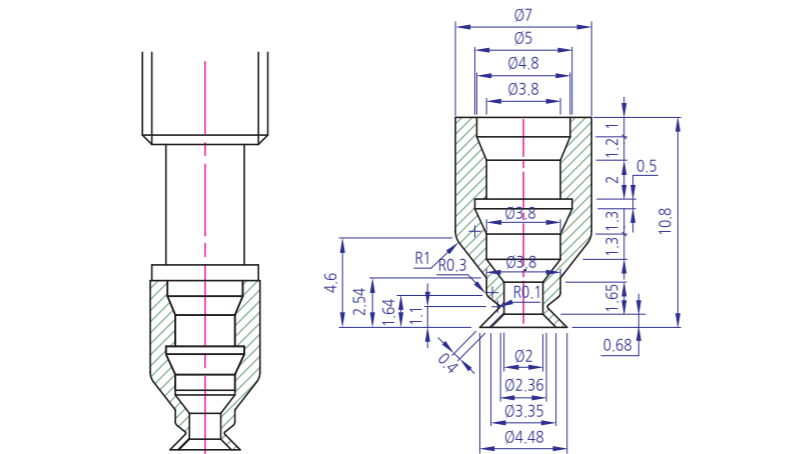


석션패드
YKO-R D7x10.8



Technical Data

Material - Silicon
Surface processing - Red
Application - 반도체 부품

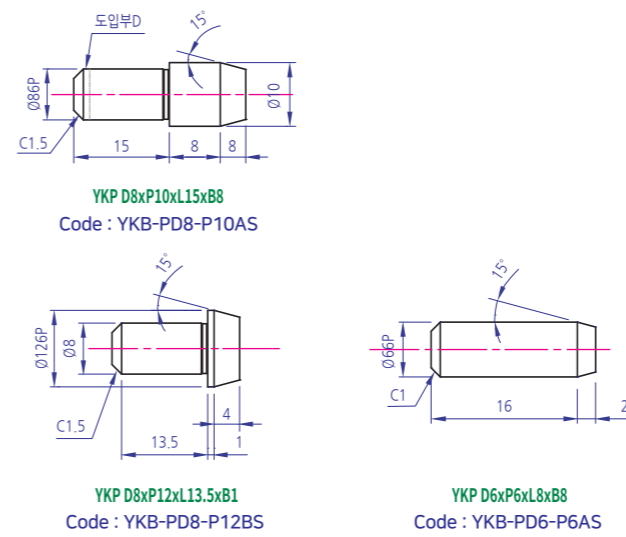
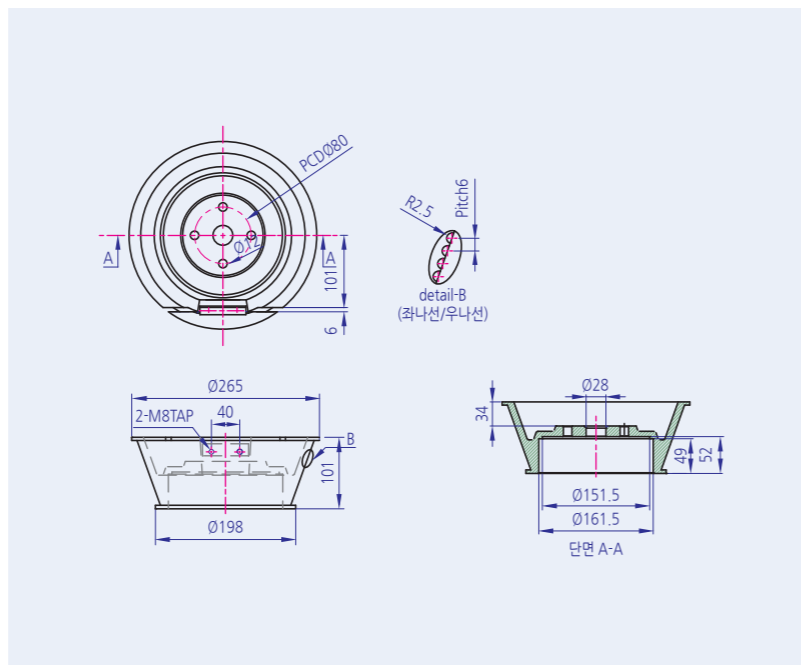


드럼 케이블
YKBK-DR D265x101

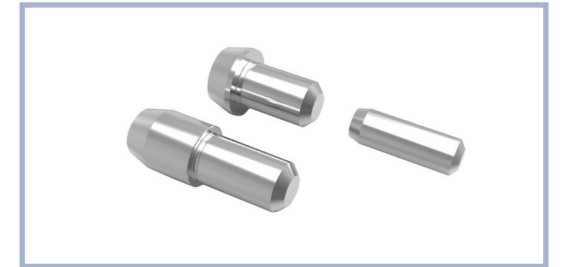


Technical Data

Material - Ac4B
Surface processing - 주물작업후 NC가공
Application - 상하 자동문 Cable Drum



위치결정핀
YKB-P 위치결정핀



Technical Data

Material - SUS
Surface processing - 위치 결정핀
Application - 주문가공

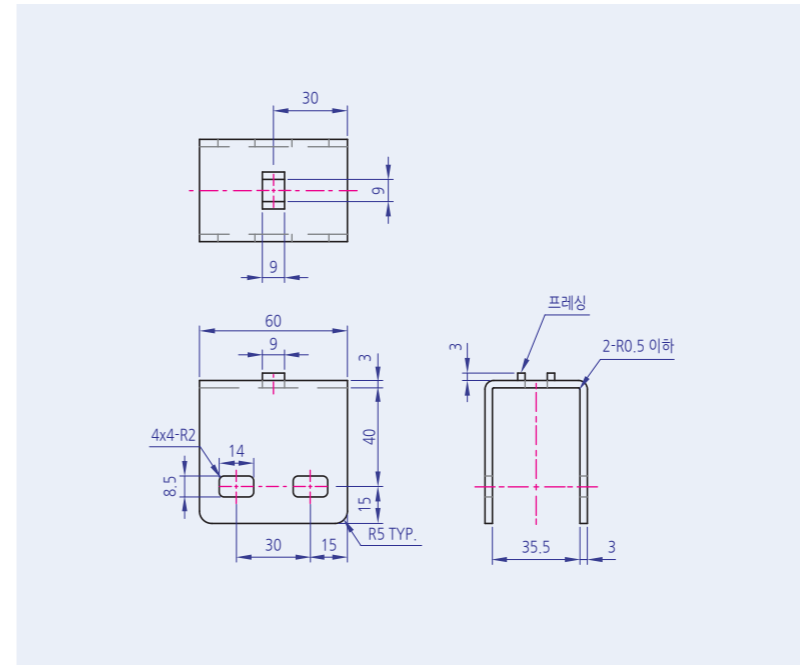
RACE WAY
YKBK-RACE WAY 60x58



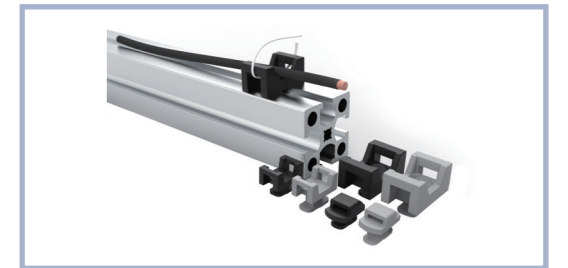
Code : YKBK-S5860E

Technical Data

Material - SS400(PO)
Surface processing - 무전해니켈
Application - RACEWAY BRACKET

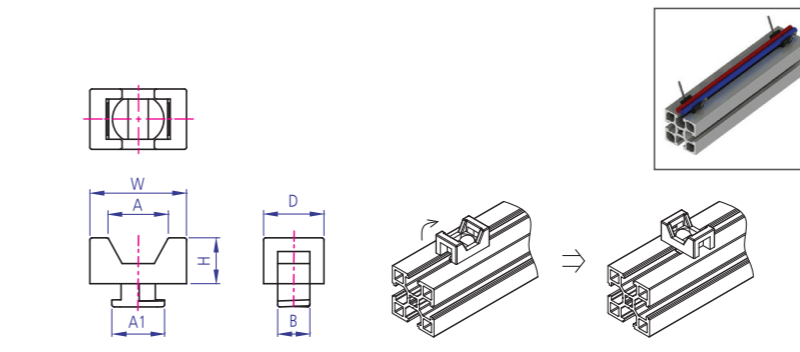


MOUNT (마운트)
YKMT SERIES



Technical Data

Material - PC
Surface processing - BLACK, GRAY
Application - 배선정리 및 공압호스 고정용 마운트

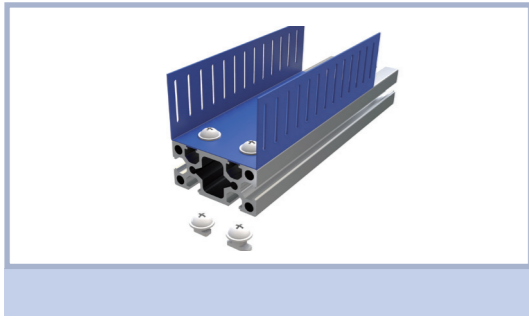


규격	Code	W	H	D	A	A1	B	Color	비고
YKMTL-30	YK-MTL-30	24	11.5	15	14	10.5	6	BK,GRAY	30용
YKMTL-40	YK-MTL-40					14	8		40용
YKMTS-30	YK-MTS-30	15	7	10	8.5	9	6		30용
YKMTS-40	YK-MTS-40					13	8		40용
YK-EMT-30	YK-EMT-30-WHITE	14.5	5	9	6	10.8	5.5	WHITE	30용
YK-EMT-40	YK-EMT-40-WHITE					12.6			40용

Roller, Bearing Holder, Motor Base, Bracket, Multi Block, Joint, Hinge, Magnet, Handle, Foot Base, 방진구, Levelling Foot, Cover, End Cap, Bolt, Nut, Washer, Special, Profile, Caster

Roller, Bearing Holder, Motor Base, Bracket, Multi Block, Joint, Hinge, Magnet, Handle, Foot Base, 방진구, Levelling Foot, Cover, End Cap, Bolt, Nut, Washer, Special, Profile, Caster

FASTENER(화스너)
YKMC-B



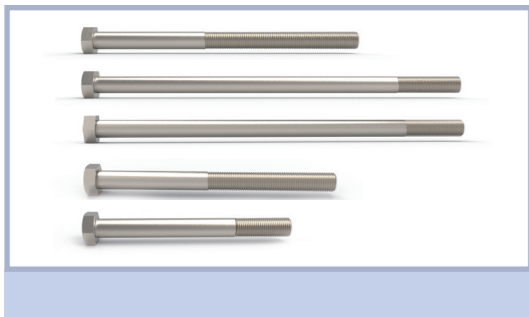
Technical Data

Material - ACETAL(WHITE)

Surface processing - NATURAL

Application - 전용화스너를 사용하여 DUCT 및 반도체자석용 PLATE를 손쉽게 고정

특수볼트
특수볼트 Series

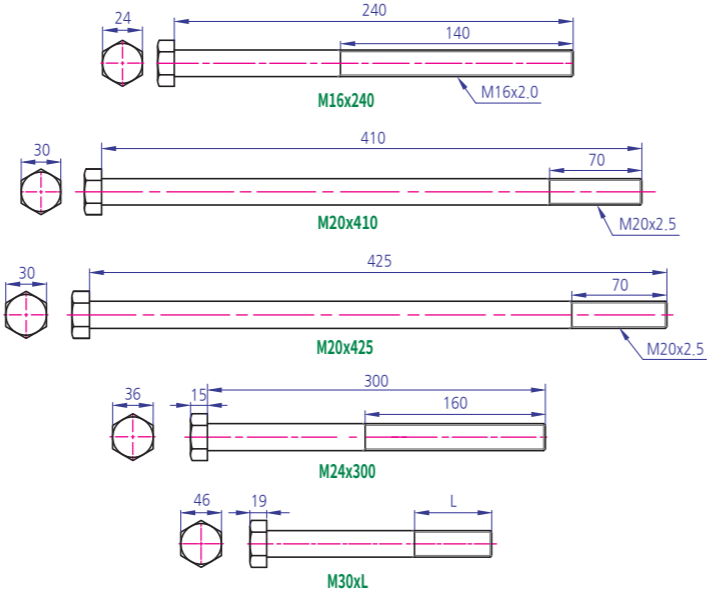
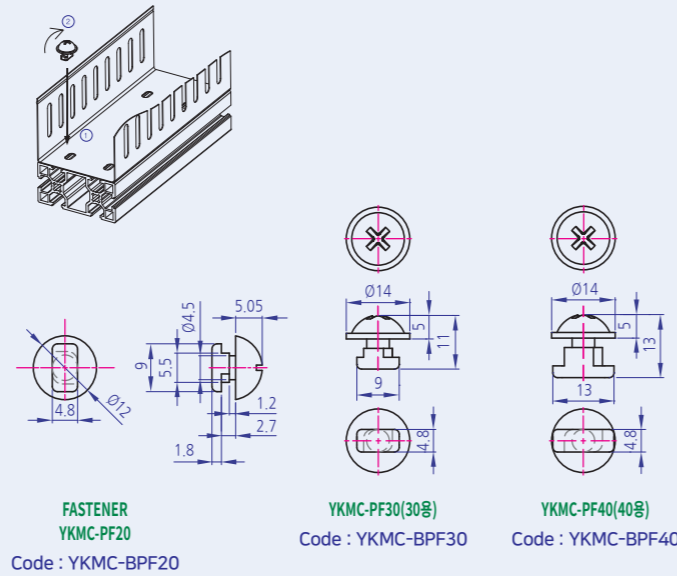


Technical Data

Material - SCM440

Surface processing - 무전해니켈

Application - SUPPORT BAR



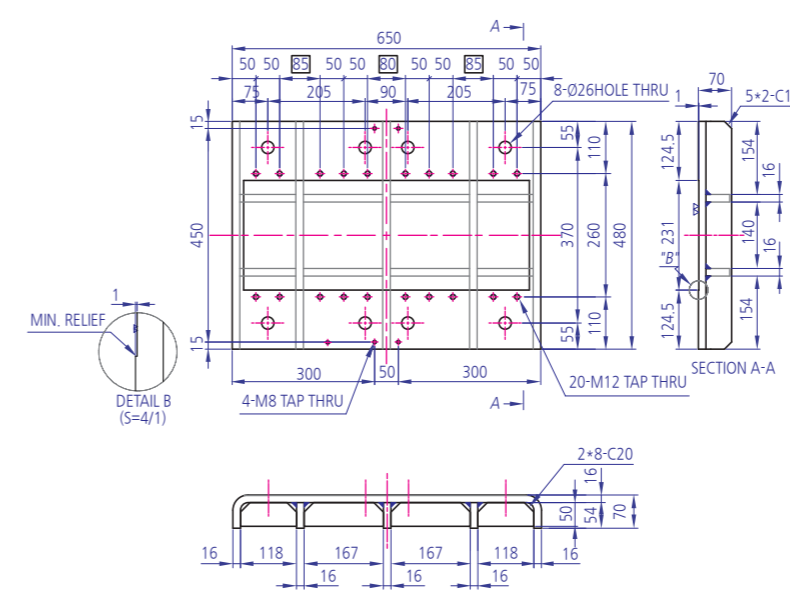
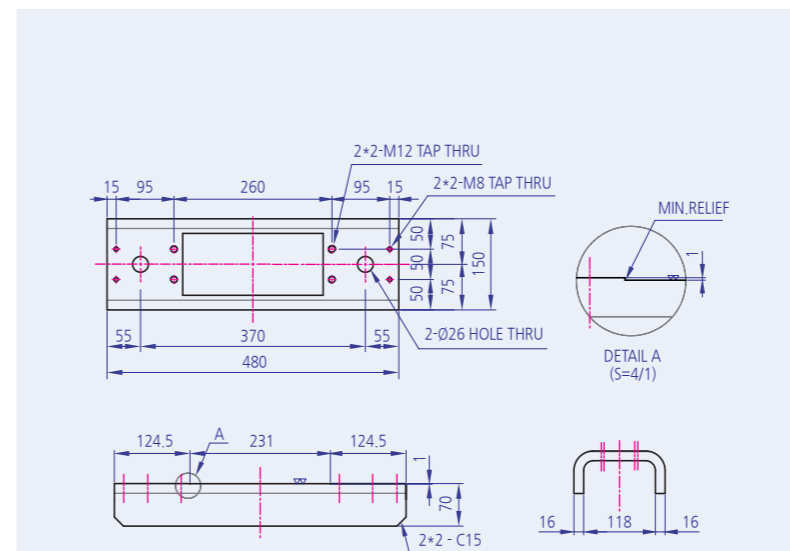
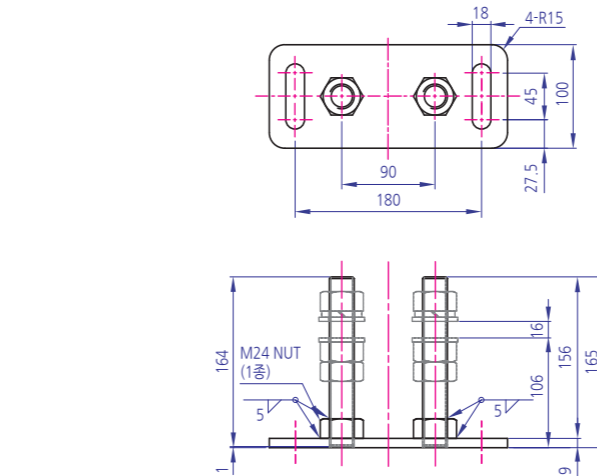
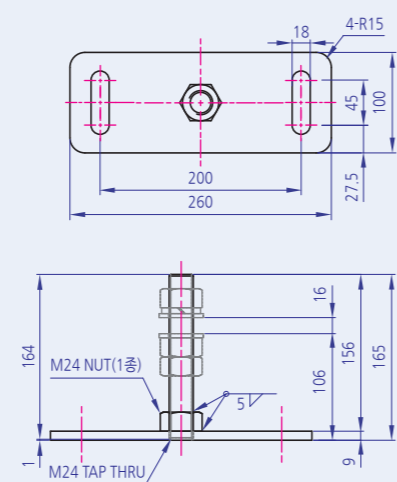
RAIL 가공품
LEVelling FOOT-A



Technical Data

Material - SS400

Surface processing - 무전해, Ni, 무정전 검은색 도장



RAIL 가공품
LEVelling FOOT-B



Technical Data

Material - SS400

Surface processing - 무전해, Ni, 무정전 검은색 도장

RAIL 가공품
RAIL BASE-A



Technical Data

Material - SS400

Surface processing - PAINTING BLACK

Application - RAIL

RAIL 가공품
RAIL BASE-B



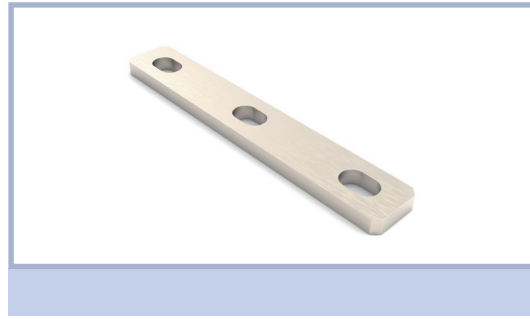
Technical Data

Material - SS400

Surface processing - PAINTING BLACK

Application - RAIL

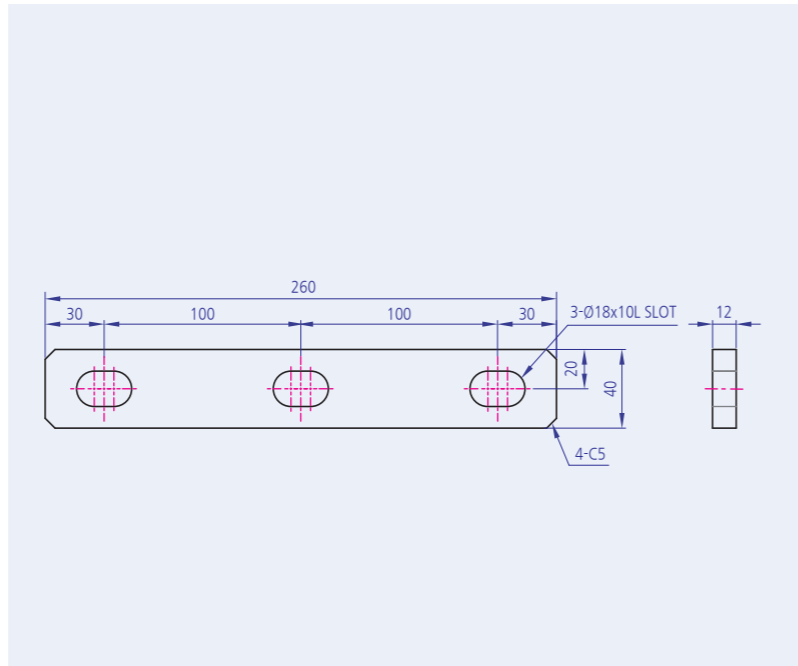
RAIL 가공품
RAIL JOINT PLATE



Technical Data

Material - SS400

Surface processing - 무전해 Ni 도금



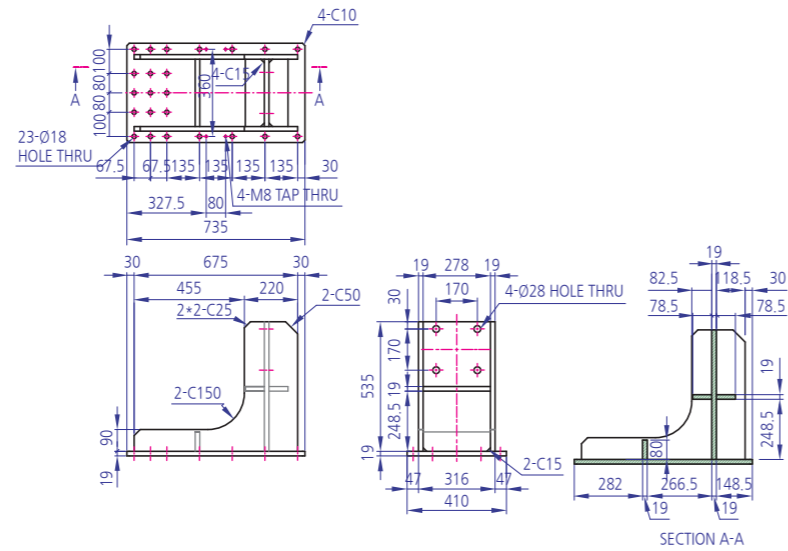
RAIL 가공품
STOPPER FRAME



Technical Data

Material - SS400

Surface processing - PAINTING BLACK



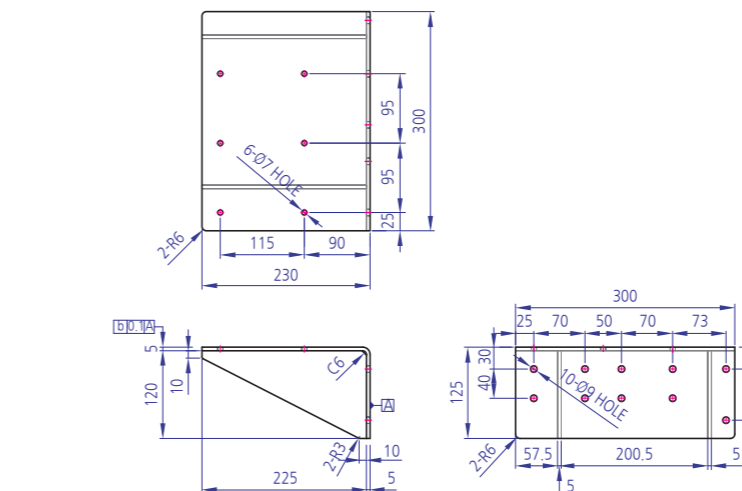
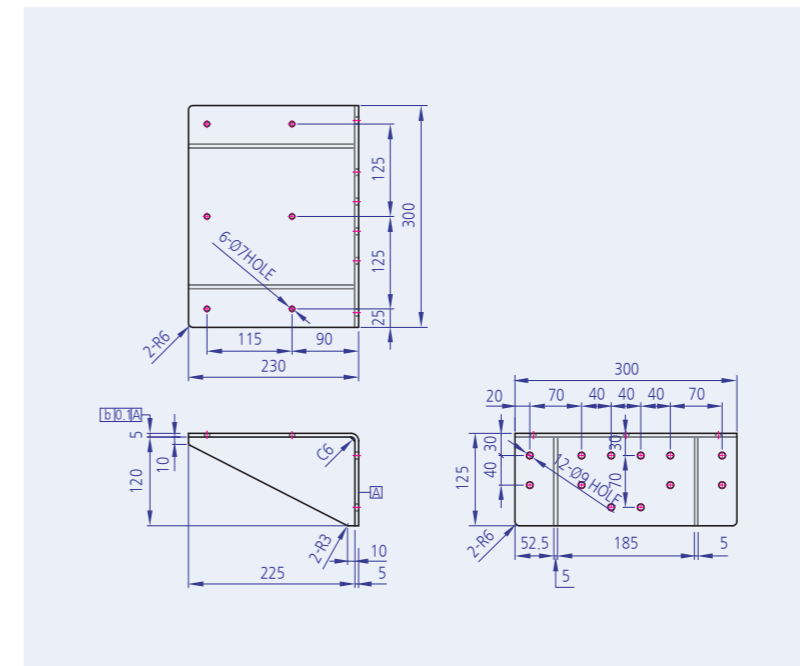
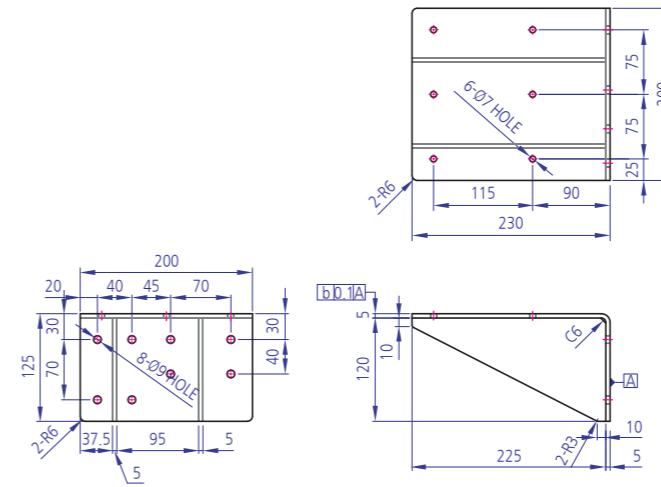
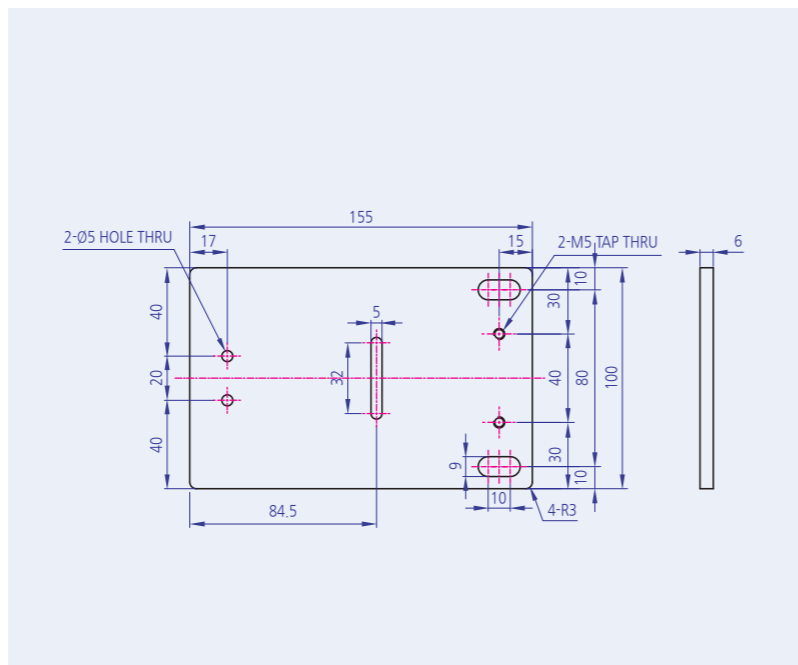
RAIL 가공품
SENSOR BKT-A



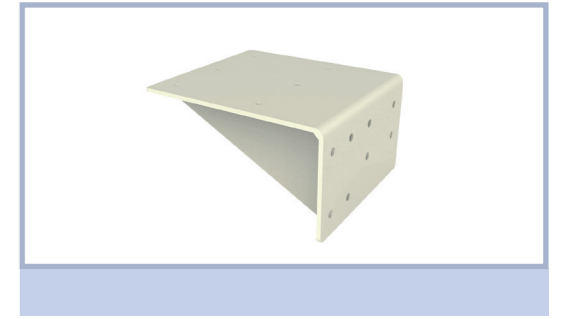
Technical Data

Material - SS400

Surface processing - PAINTING BLACK



SHELF LOAD ARM 가공품
LOAD ARM-1-230X125X200

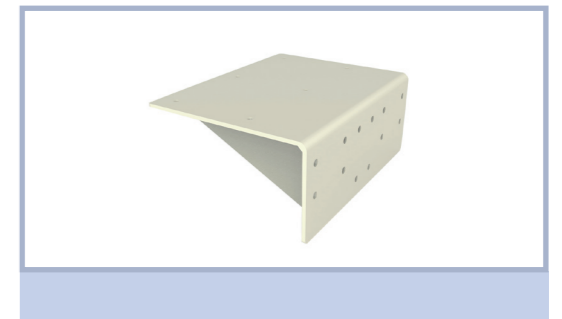


Technical Data

Material - SS400

Surface processing - PAINTING IVORY

SHELF LOAD ARM 가공품
LOAD ARM-2-230X125X300

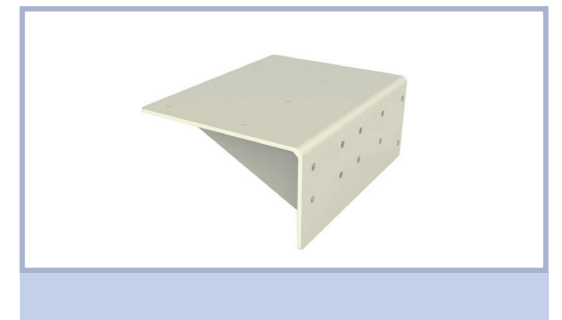


Technical Data

Material - SS400

Surface processing - PAINTING IVORY

SHELF LOAD ARM 가공품
LOAD ARM-3-230X125X300



Technical Data

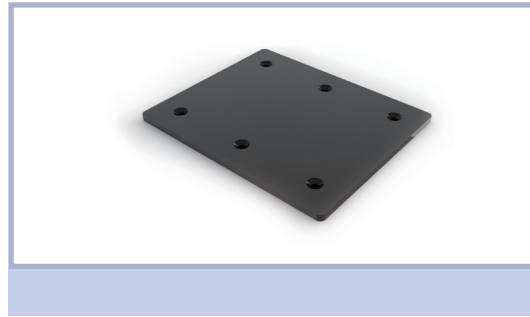
Material - SS400

Surface processing - PAINTING IVORY

Roller
Bearing Holder
Motor Base
Bracket
Multi Block
Joint
Hinge
Magnet
Handle
Foot Base
방진구
Leveling Foot
Cover
End Cap
Bolt
Nut
Washer
Special
Profile
Caster

Roller
Bearing Holder
Motor Base
Bracket
Multi Block
Joint
Hinge
Magnet
Handle
Foot Base
방진구
Leveling Foot
Cover
End Cap
Bolt
Nut
Washer
Special
Profile
Caster

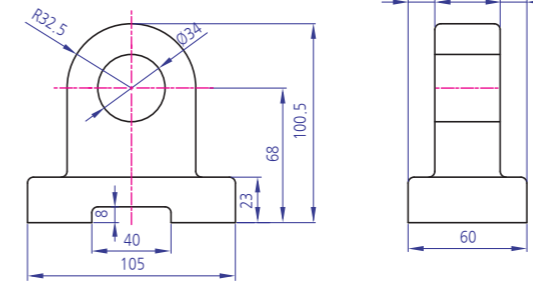
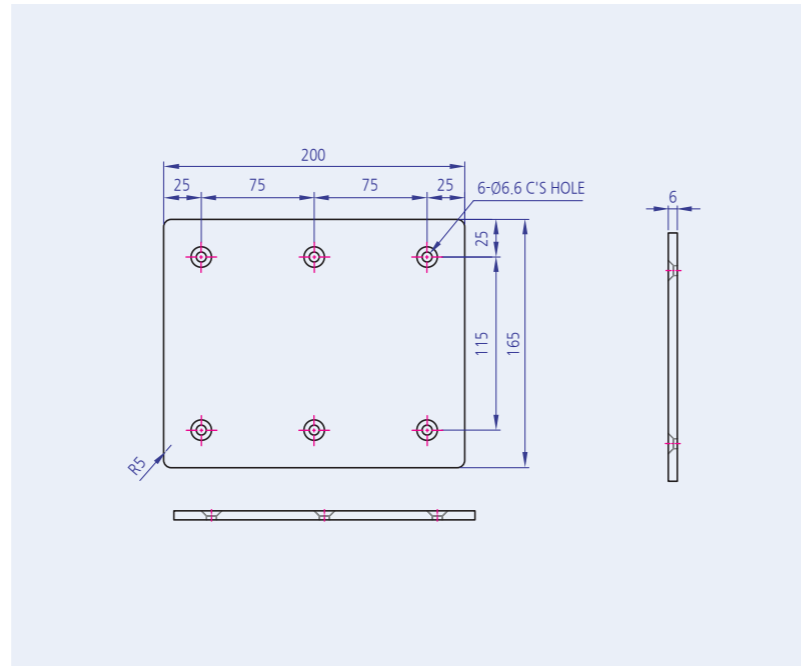
SHELF LOAD ARM 가공품
LOAD ARM PAD-1-200X165X6T



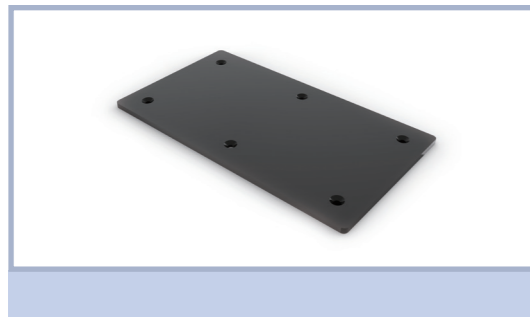
Technical Data

Material - UHMW

Surface processing -



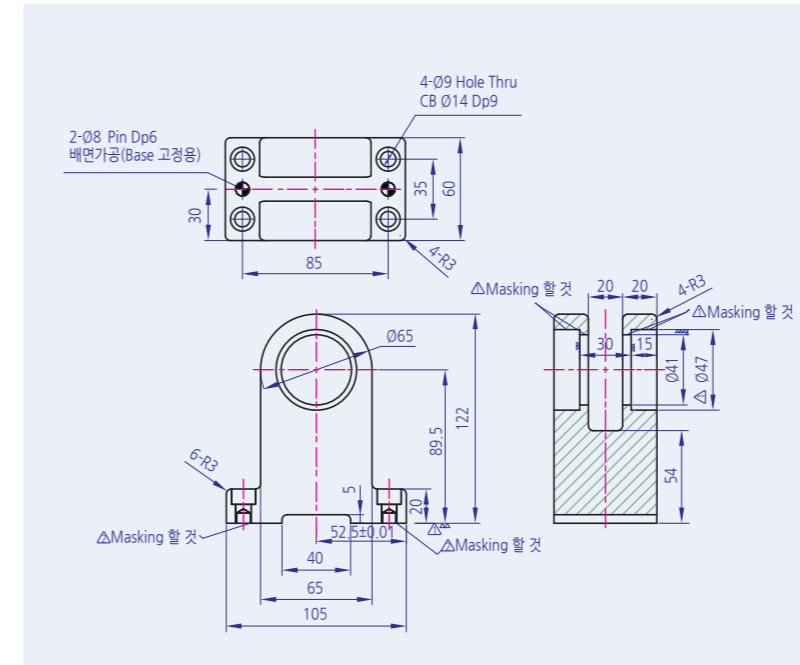
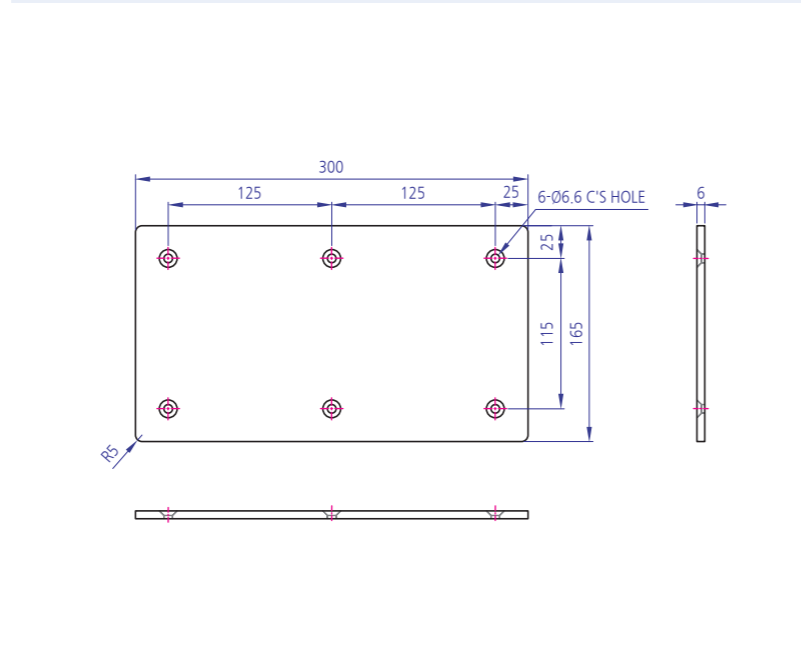
SHELF LOAD ARM 가공품
LOAD ARM PAD-2-300X165X6T



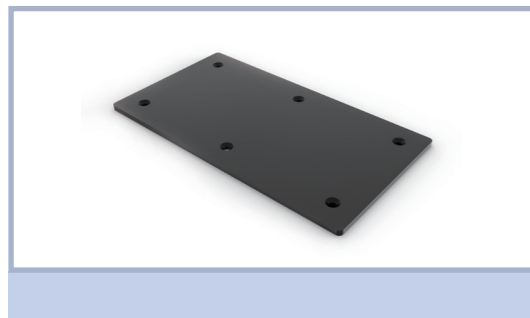
Technical Data

Material - UHMW

Surface processing -



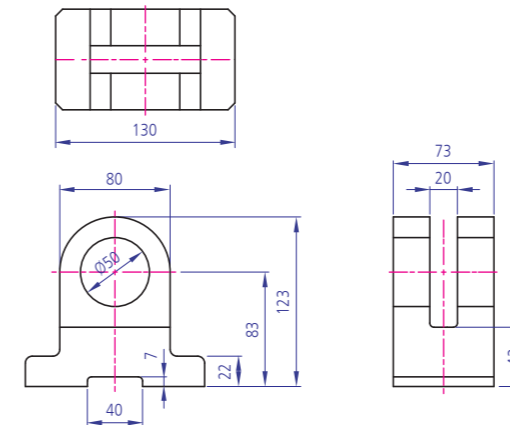
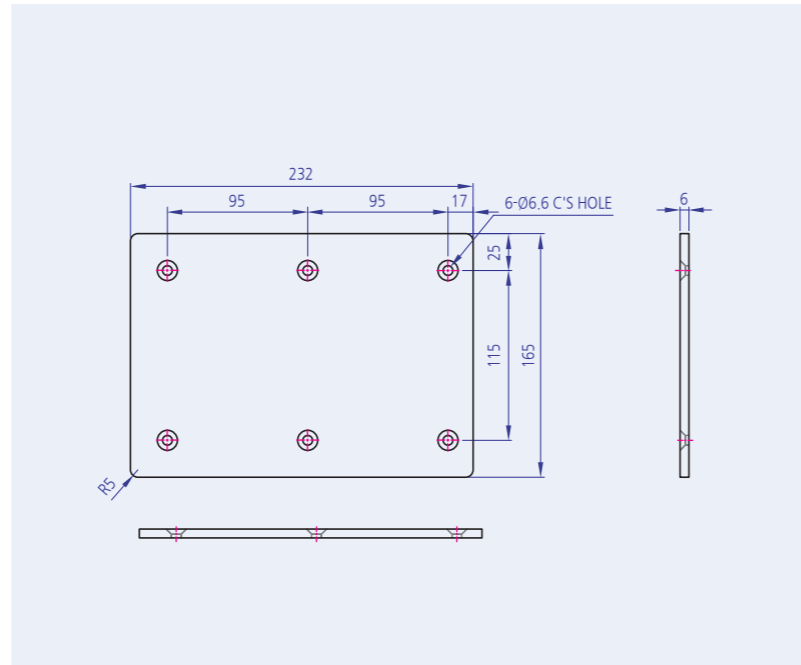
SHELF LOAD ARM 가공품
LOAD ARM PAD-3-232X165X6T



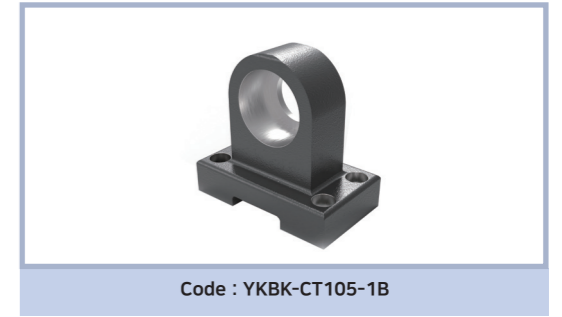
Technical Data

Material - UHMW

Surface processing -



주물제품
YKBK-C-105x97.5x60



Code : YKBK-CT105-1B

Technical Data

Material - FCD45(주물)

Surface processing - 분체도장(흑)

Application - CARRIAGE용 / FIX HINGE BLOCK-4

주물제품
YKBK-C-105x122x60



Code : YKBK-CT105-2B

Technical Data

Material - FCD45(주물)

Surface processing - 분체도장(흑)

Application - CARRIAGE용

주물제품
YKBK-C-130x121x69



Code : YKBK-CT130-1-1B

Technical Data

Material - FCD45(주물)

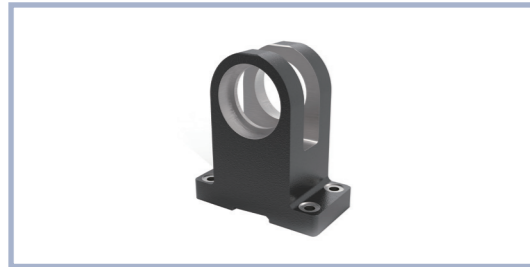
Surface processing - 분체도장(흑)

Application - CARRIAGE용

Roller
Bearing Holder
Motor Base
Bracket
Multi Block
Joint
Hinge
Magnet
Handle
Foot Base
방진구
Leveling Foot
Cover
End Cap
Bolt
Nut
Washer
Special
Profile
Caster

Roller
Bearing Holder
Motor Base
Bracket
Multi Block
Joint
Hinge
Magnet
Handle
Foot Base
방진구
Leveling Foot
Cover
End Cap
Bolt
Nut
Washer
Special
Profile
Caster

주물제품
YKBK-C-130x144x69



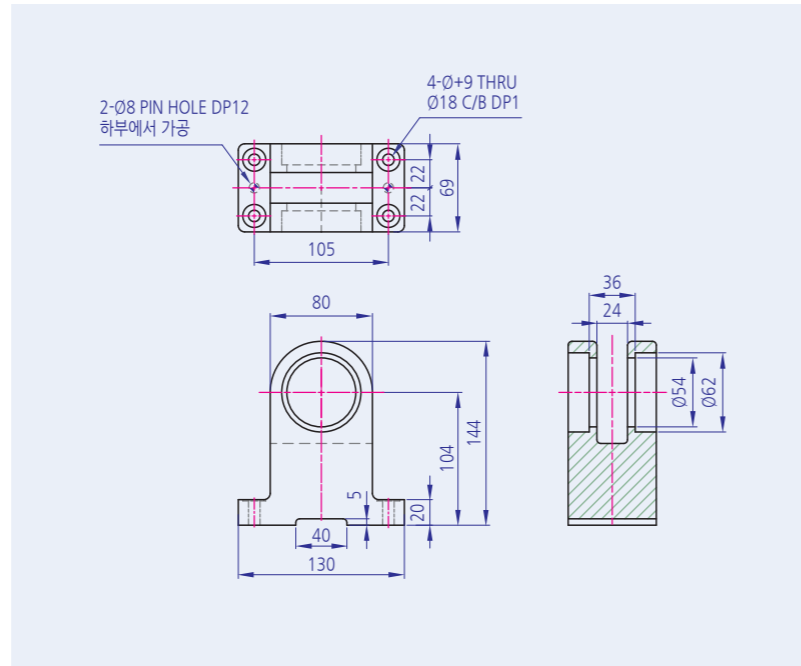
Code : YKBK-CT130-2AB
Code : YKBK-CT130-2BB

Technical Data

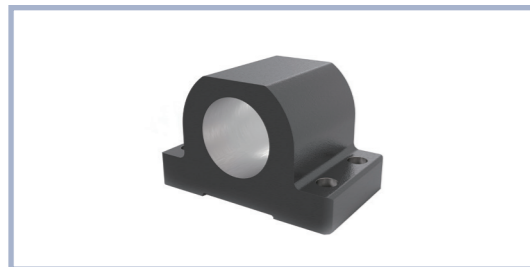
Material - FCD45(주물)

Surface processing - 분체도장(흑)

Application - CARRIAGE용/ FIX HINGE BLOCK-1



주물제품
YKBK-C-140x87x85



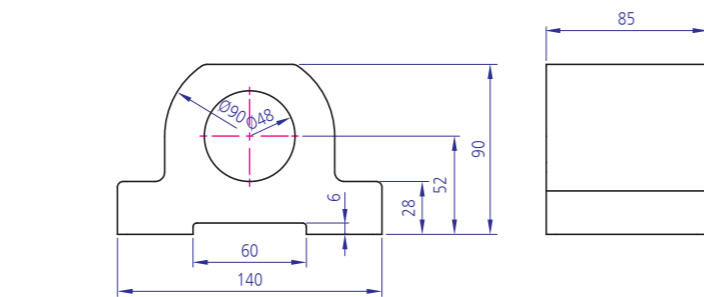
Code : YKBK-CT140-1B

Technical Data

Material - FCD45(주물)

Surface processing - 분체도장(흑)

Application - CARRIAGE용



주물제품
YKBK-C-180x130x110



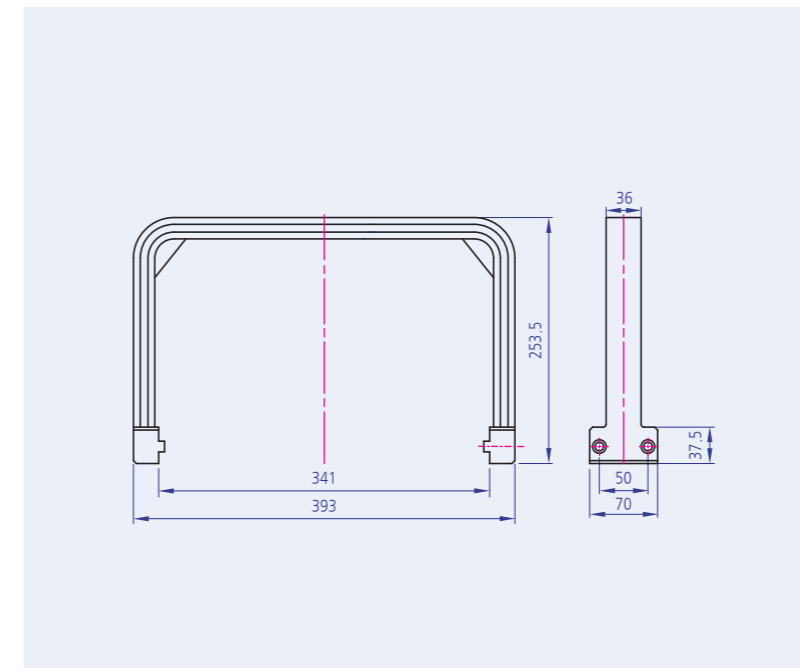
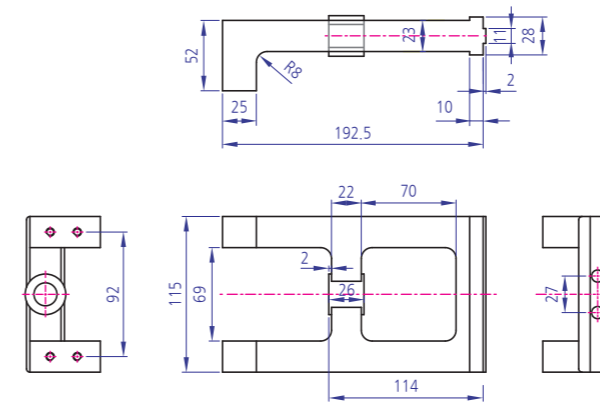
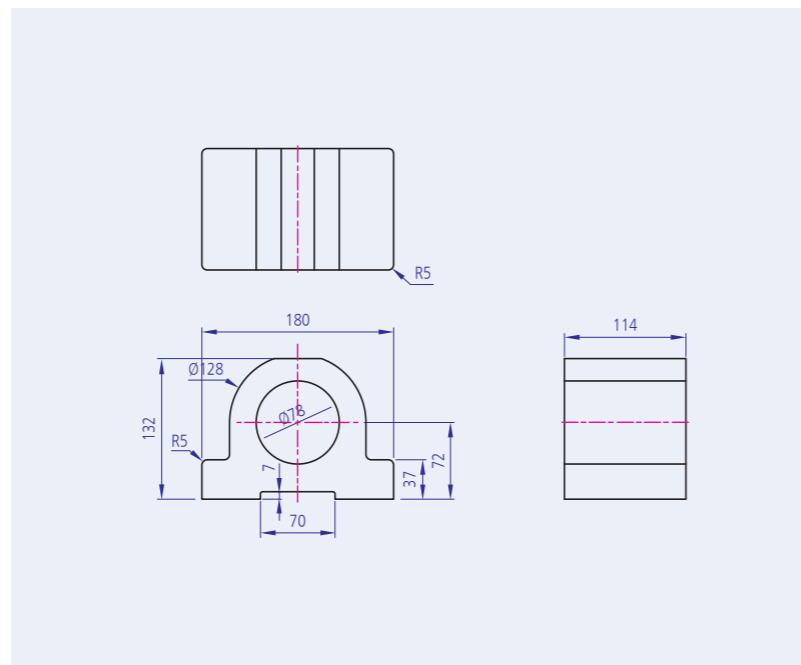
Code : YKBK-CT180-1-1B

Technical Data

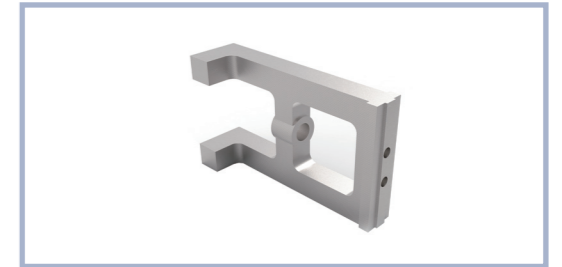
Material - FCD45(주물)

Surface processing - 분체도장(흑)

Application - CARRIAGE용



주물제품
YKBK-CT-115x194.5x52



Code : YKBK-CT115-1
Code : YKBK-CT115-1E

Technical Data

Material - SC480(주물)

Surface processing - SILVER도장

Application - OHCV용

주물제품
YKBK-CT-393x253.5x70



Code : YKBK-CT393-1S

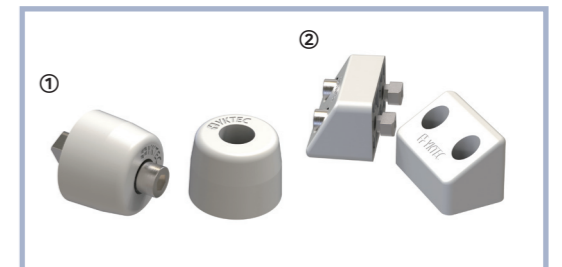
Technical Data

Material - FCD45(주물)

Surface processing - SILVER도장

Application - OHCV용

CUSHION DOOR
YKBK-M-CS SERIES



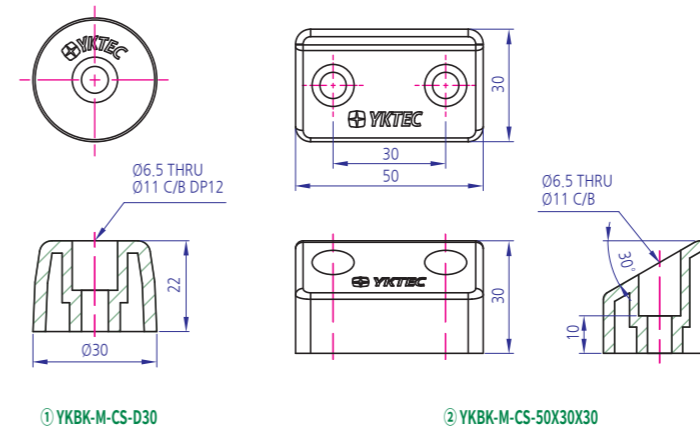
① Code : YKBK-ECD30-1
② Code : YKBK-ECQ50-1

Technical Data

Material - 우레탄

Surface processing - SANDING (IVORY)

Application - 충격흡수용



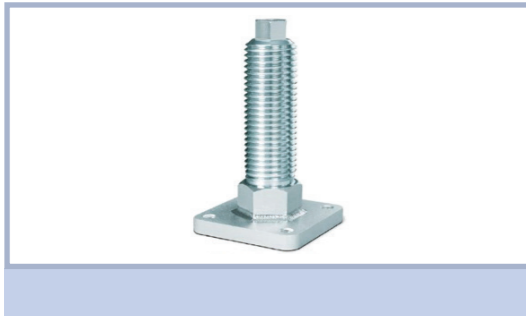
① YKBK-M-CS-D30

② YKBK-M-CS-50X30X30

Roller
Bearing Holder
Motor Base
Bracket
Multi Block
Joint
Hinge
Magnet
Handle
Foot Base
방진구
Foot
Cover
End Cap
Bolt
Nut
Washer
Special
Profile
Caster

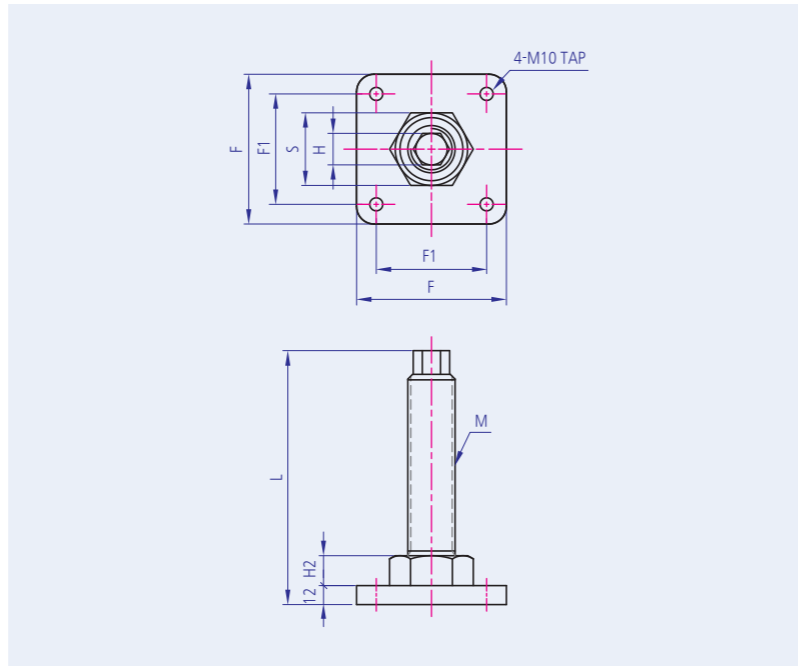
Roller
Bearing Holder
Motor Base
Bracket
Multi Block
Joint
Hinge
Magnet
Handle
Foot Base
방진구
Foot
Cover
End Cap
Bolt
Nut
Washer
Special
Profile
Caster

LEVELLING SYSEEM
ACLS



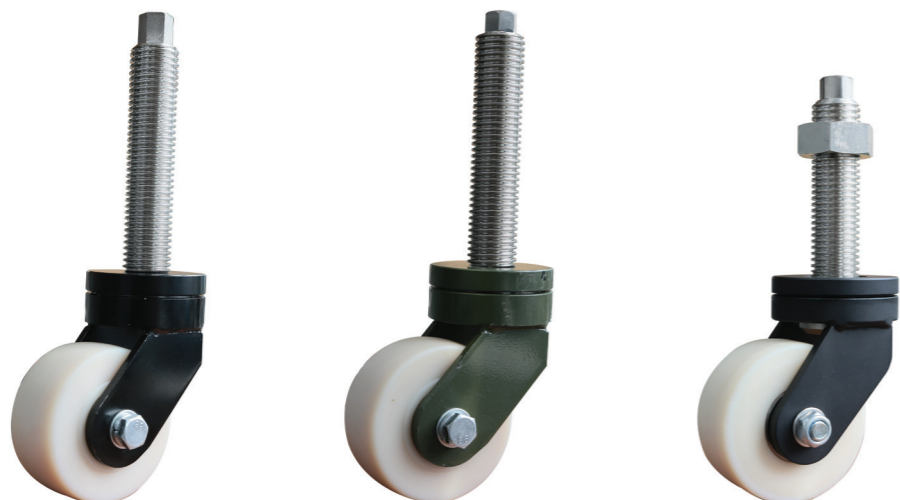
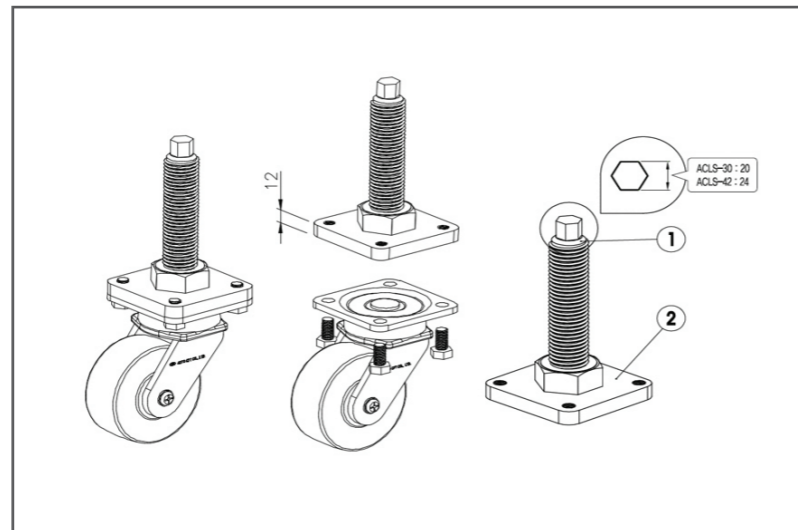
Product Information

- ① 제품 특징(Features)
 - 손쉬운 이동성, 고정성, 높낮이 조절 및 360° 회전 일체형
 - 큰폭의 높낮이 조절이 가능
 - 상하측 육각부로 장비장착시 조립 용이
 - 다양한 중하중 시리즈 부착 가능
- ② 적용범위(Application)
 - 반도체 제조장비
 - 전자부품 생산설비
 - 현상기
 - 실험장비
 - 이화학기기
- ③ 기술자료
 - 개당 허용 하중 : 400~700 Kg/EA
 - 추천 허용 하중 : 1,200~2,400Kg/4EA
 - 사용 온도 : -10~60°C
 - RoHS 대응 가능



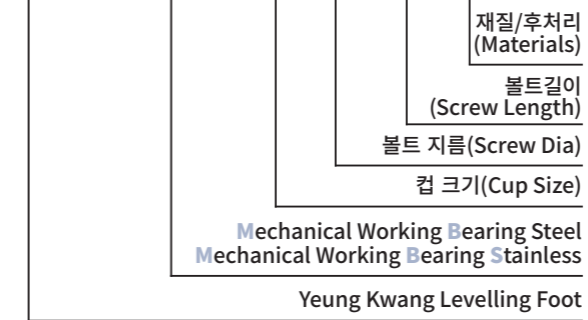
제품명	F	F1	S	H	L	H2	M
ACLS30	95	70	46	20	161	19	M30-P3.5
ACLS42					168	26	M42-P4.5

참조자료



모델설명 ORDERING CODE

YKLF - MB/MBS 78 24 150 N

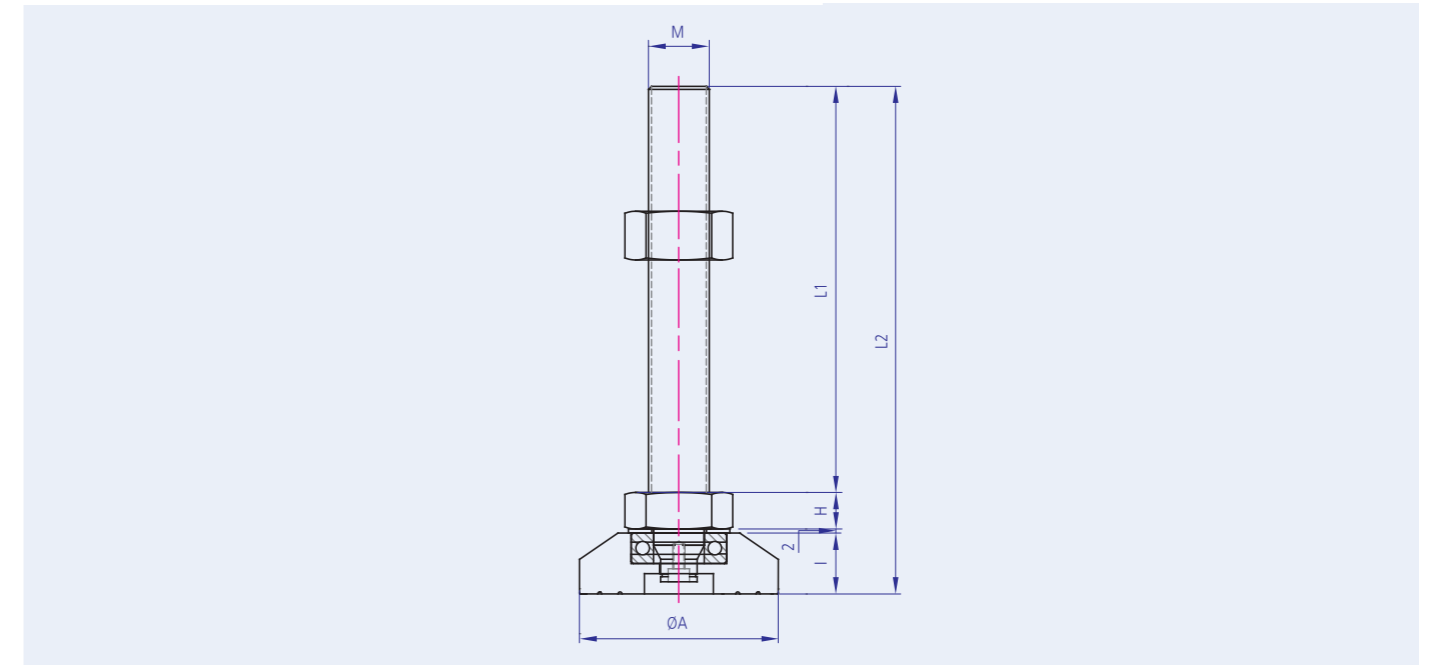


LEVELLING FOOT
YKLF-MB/MBS (고하중용)



Technical Data

Material - S45C, SUS304
Surface processing - NI, AC



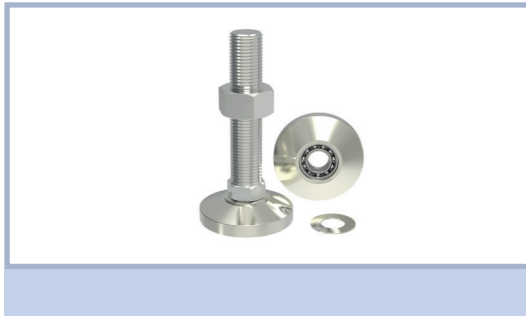
규격	Code(모델)	Dimension (mm)						재질/후처리			허용하중 kg/4EA										
		A	M	L1	L2	H	I	BOLT&NUT	CUP	후처리											
YKLF-MB/MBS	M24X3.0P	78-24X150	YKLF-@7824150#	Ø78	M24X3.0P	150	196	14	30	S45C SUS304	S45C SUS304	NI(니켈) AC(산처리)	4000								
		78-24X200	YKLF-@7824200#			200	246														
	M30X3.5P	98-24X150	YKLF-@9824150#	Ø98	M24X3.0P	150	196	14					30	S45C SUS304	S45C SUS304	NI(니켈) AC(산처리)	4000				
		98-24X200	YKLF-@9824200#			200	246														
	M42X4.5P	98-30X150	YKLF-@9830150#	Ø98	M30X3.5P	150	200	18									30	S45C SUS304	S45C SUS304	NI(니켈) AC(산처리)	5000
			98-30X200			YKLF-@9830200#	200														
127-42X150		YKLF-@12742150#	150	204	22	6000															
127-42X200	YKLF-@12742200#	200	254																		
127-42X250	YKLF-@12742250#	250	304																		

주문예) @=모델선택(MB, MBS), #=재질/후처리(니켈-N, 산처리-A) / MB 니켈 예 : YKLF-MB7824150N 기타 특수사항은 특수제적함.

Roller, Bearing Holder, Motor Base, Bracket, Multi Block, Joint, Hinge, Magnet, Handle, Foot Base, 방진구, Levelling Foot, Cover, End Cap, Bolt, Nut, Washer, Special, Profile, Caster

Roller, Bearing Holder, Motor Base, Bracket, Multi Block, Joint, Hinge, Magnet, Handle, Foot Base, 방진구, Levelling Foot, Cover, End Cap, Bolt, Nut, Washer, Special, Profile, Caster

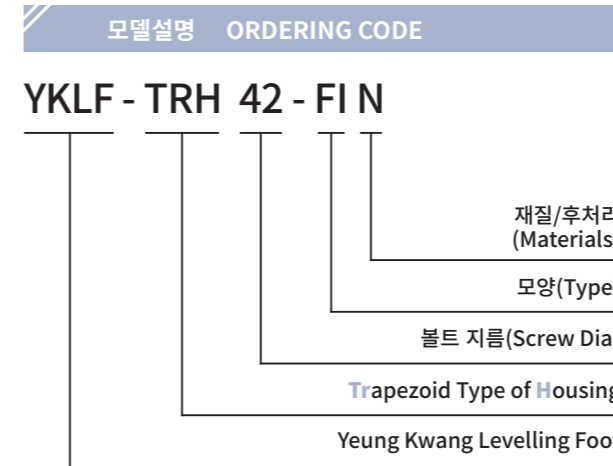
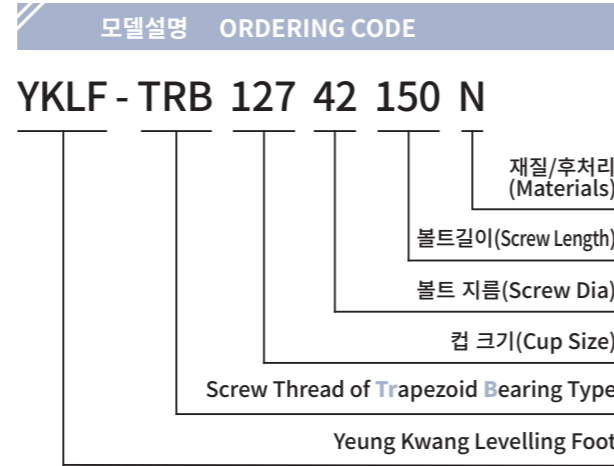
LEVELLING FOOT
YKLF-TRB (초고하중용)



Technical Data

Material - S45C

Surface processing - 무전해, 니켈도금



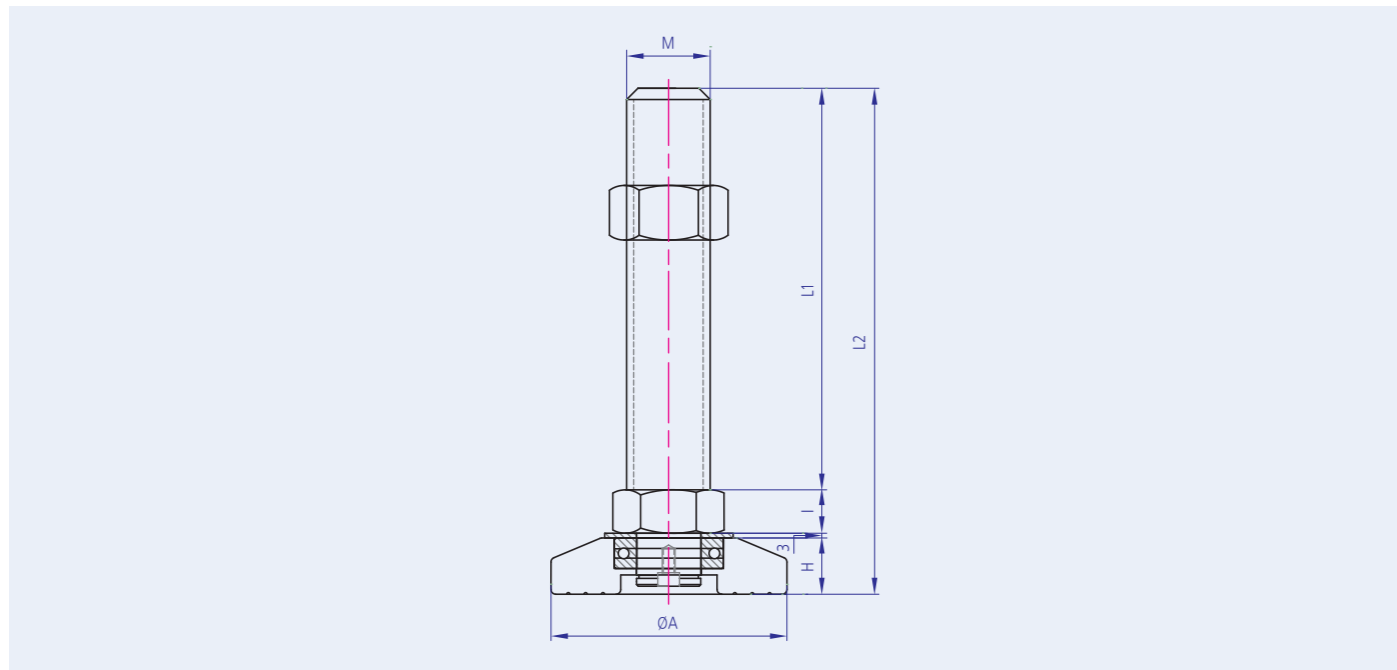
LEVELLING FOOT
YKLF-TRH (초고하중용)



Technical Data

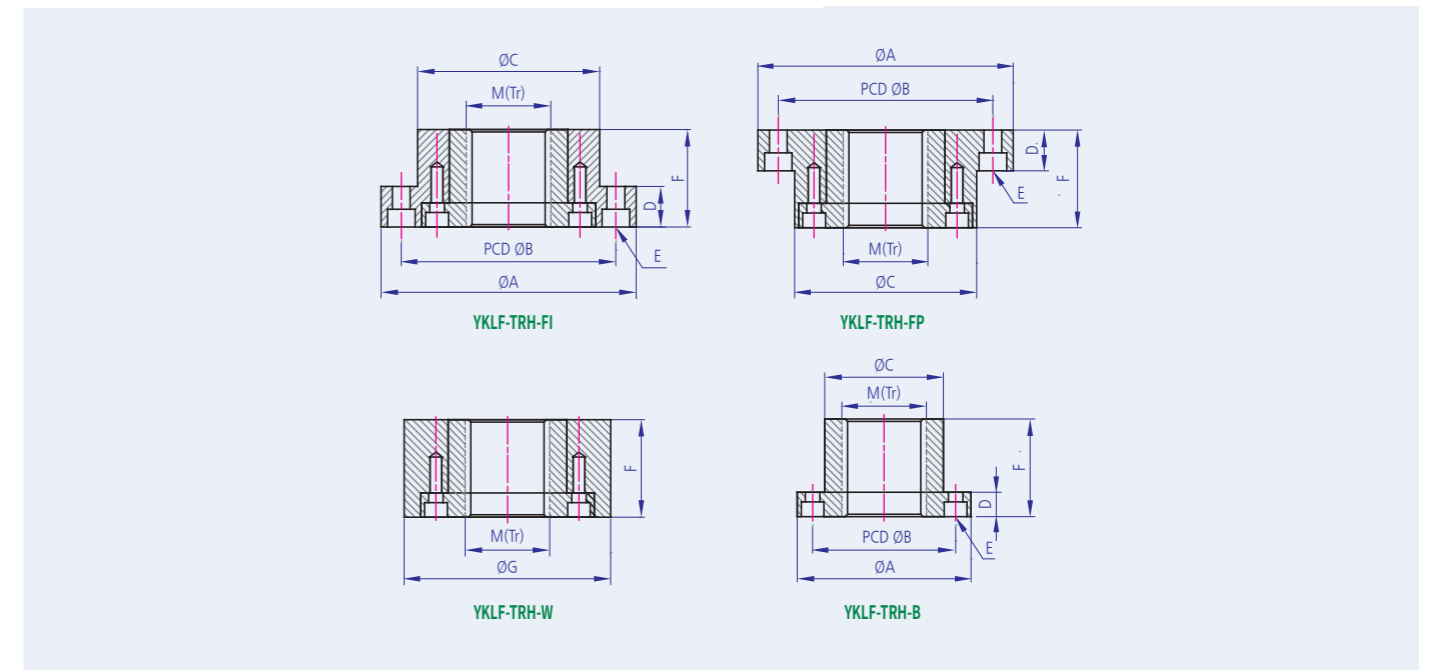
Material - S45C/SUS

Surface processing - Zn, Ni, E-Ni



규격	Code(모델)	Dimension (mm)							재질/후처리			허용하중 kg/4EA								
		A	M	L1	L2	H	I	BOLT&NUT	CUP	후처리										
YKLF-TRB	Tr42X6P	127-Tr42X150	Ø127	Tr42X6P	150	204	22	30	S45C	S45C	무전해 니켈도금	12,000								
		127-Tr42X200			200	254														
		127-Tr42X250			250	304														
		127-Tr42X300			300	354														
	Tr52X7P	147-Tr52X150	Ø147	Tr52X7P	150	215	27	35					S45C	S45C	무전해 니켈도금	16,000				
		147-Tr52X200			200	265														
		147-Tr52X250			250	315														
		147-Tr52X300			300	365														
	Tr60X7P	147-Tr60X150	Ø147	Tr60X7P	150	215	27	35									S45C	S45C	무전해 니켈도금	20,000
		147-Tr60X200			200	265														
		147-Tr60X250			250	315														
		147-Tr60X300			300	365														

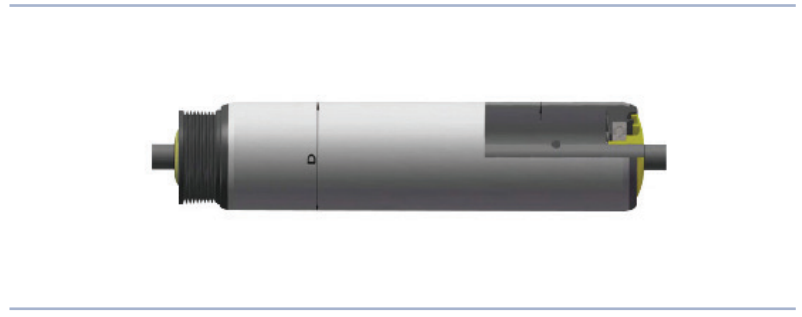
※ 기타 특수사양은 특수제작함.



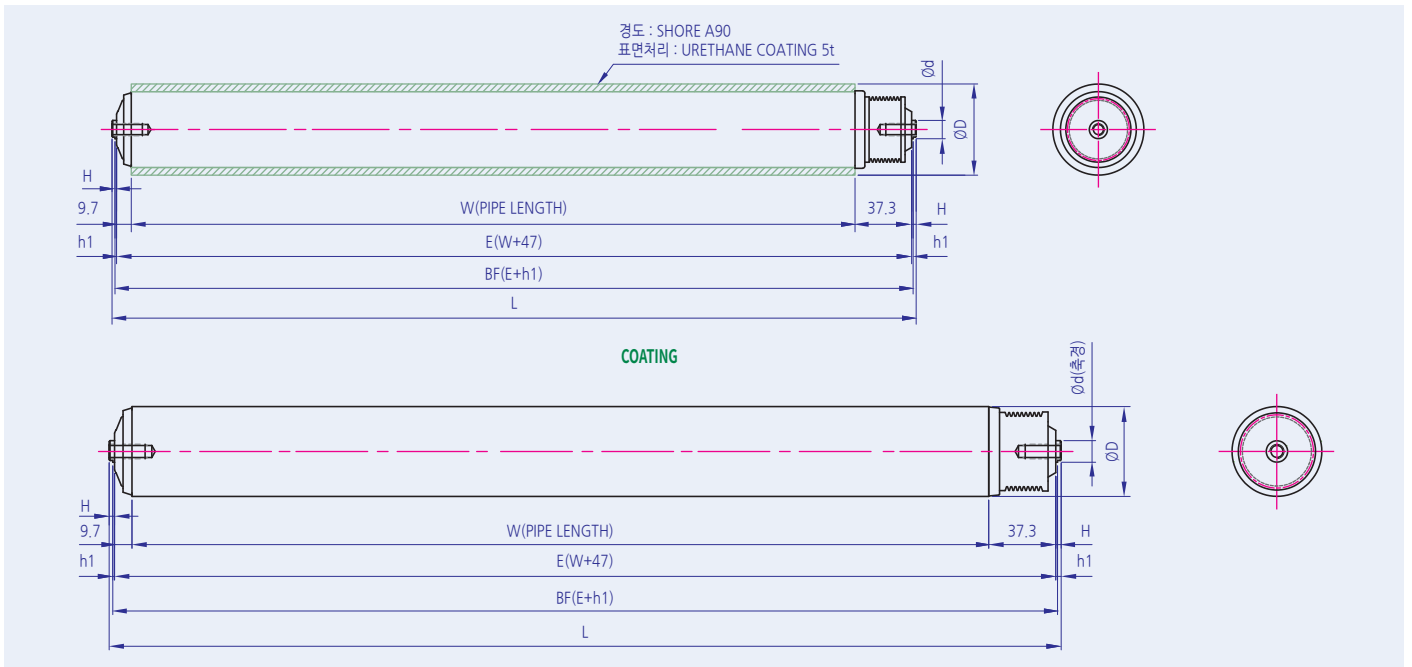
규격	Code(모델)	Dimension (mm)										재질/후처리		
		A	B(PCD)	M(Tr)	C	D	E	F	G	Housing	Busing	후처리		
YKLF-TRH (Housing + Bushing Set)	TRH42-FI	Tr42X6P	YKLF-TRH42-FI	Ø147	Ø122	Tr42X6P	Ø102	25	4-M10	50	-	S45C/SUS	BS	Zn(아연) Ni(니켈) E-Ni (무전해)
	TRH52-FI	Tr52X7P	YKLF-TRH52-FI	Ø157	Ø132	Tr52X7P	Ø112		4-M10	60	-			
	TRH60-FI	Tr60X7P	YKLF-TRH60-FI	Ø167	Ø142	Tr60X7P	Ø122		6-M10	70	-			
	TRH42-FP	Tr42X6P	YKLF-TRH42-FP	Ø147	Ø122	Tr42X6P	Ø102	25	4-M10	50	-			
	TRH52-FP	Tr52X7P	YKLF-TRH52-FP	Ø157	Ø132	Tr52X7P	Ø112		4-M10	60	-			
	TRH60-FP	Tr60X7P	YKLF-TRH60-FP	Ø167	Ø142	Tr60X7P	Ø122		6-M10	70	-			
	TRH42-W	Tr42X6P	YKLF-TRH42-W	-	-	Tr42X6P	-	-	-	50	Ø117			
	TRH52-W	Tr52X7P	YKLF-TRH52-W	-	-	Tr52X7P	-	-	-	60	Ø127			
	TRH60-W	Tr60X7P	YKLF-TRH60-W	-	-	Tr60X7P	-	-	-	70	Ø137			
	YKLF-TRH (Bushing)	TRH42-B	Tr42X6P	YKLF-TRH42-B	Ø97	Ø78	Tr42X6P	Ø63	15	4-M8	50			
TRH52-B		Tr52X7P	YKLF-TRH52-B	Ø107	Ø88	Tr52X7P	Ø73	4-M8		60	-	-	-	
TRH60-B		Tr60X7P	YKLF-TRH60-B	Ø117	Ø98	Tr60X7P	Ø83	6-M8		70	-	-	-	

※ 기타 특수사양은 특수제작함.

CONVEYOR ROLLER
VD Roller Series



1. 폴리 V 벨트 사용합니다.
2. 우레탄 코팅도 가능합니다.



D&t	Shaft		Tube		비고
	축경	재질	Steel	SUS	
Ø50x1.5	Ø12	Steel/SUS	CR/ENP	일반/Buffering	OPTION : Urethane Coating
Ø60xUR5.0	Ø12				
Ø60x2	Ø12/Ø15				
Ø76x3	Ø15/Ø20				

※ 발주시 제작도면 첨부